

1,300,000 lx Forced Air Cooling Type Line Light IDBB-LSRF series

Capable of excellent output power over 1,300,000 lx



Special Optical Design

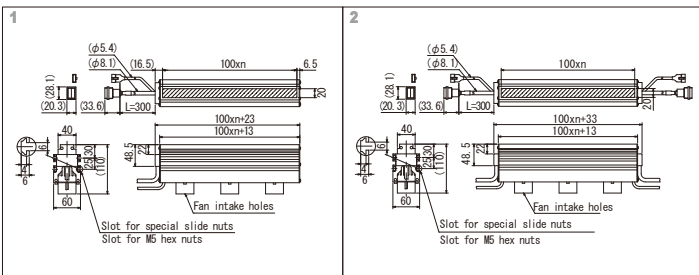
Forced-Air Cooling

Power LEDs

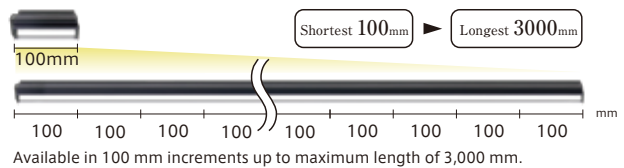
- A forced air cooling type is also available for the Brimax line light.
- Forced air cooling system enables excellent output power over 1,300,000 lx.
- Lineup includes the light emission sizes from 100 to 3,000 mm in 100 mm increments.

Model	Light Color	Power consumption (w)	Input Voltage	Power Supply	Drawing
IDBB-LSRF100W	W	40	DC48V	IWDV-300S-48 (P.97)	n=1
IDBB-LSRF200W	W	80			n=2
IDBB-LSRF300W	W	120			n=3
IDBB-LSRF400W	W	160			n=4
IDBB-LSRF500W	W	200			n=5
IDBB-LSRF600W	W	240			n=6
IDBB-LSRF700W	W	280			n=7
IDBB-LSRF800W	W	320			n=8
IDBB-LSRF900W	W	360			n=9
IDBB-LSRF1000W	W	400			n=10
IDBB-LSRF1100W	W	440			n=11
IDBB-LSRF1200W	W	480			n=12
IDBB-LSRF1300W	W	520			n=13
IDBB-LSRF1400W	W	560			n=14
IDBB-LSRF1500W	W	600			n=15
IDBB-LSRF1600W	W	640		IWDV-600S-48 (P.97)	n=16
IDBB-LSRF1700W	W	680			n=17
IDBB-LSRF1800W	W	720			n=18
IDBB-LSRF1900W	W	760			n=19
IDBB-LSRF2000W	W	800			n=20
IDBB-LSRF2100W	W	840			n=21
IDBB-LSRF2200W	W	880			n=22
IDBB-LSRF2300W	W	920			n=23
IDBB-LSRF2400W	W	960			n=24
IDBB-LSRF2500W	W	1000			n=25
IDBB-LSRF2600W	W	1040			n=26
IDBB-LSRF2700W	W	1080			n=27
IDBB-LSRF2800W	W	1120			n=28
IDBB-LSRF2900W	W	1160			n=29
IDBB-LSRF3000W	W	1200			n=30

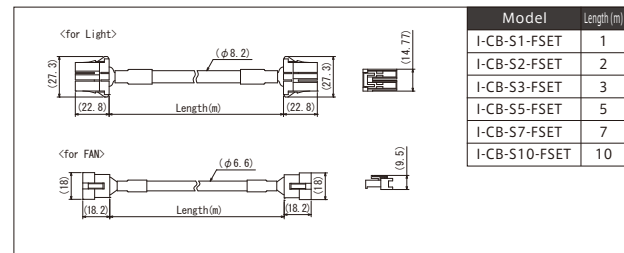
*See page 113 for condensing lens and optical diffusion plate models.
 *Condensing lens (LBB-□) and optional diffusion plate (KBB-LSR□) can be mounted. □ represents size in 100 mm increments. We line up the condense lens from 100 to 1000 mm, and diffusion plate is from 100 to 1800 mm. When ordering, specify number and type of condensing lenses and diffusion plates required. Diffusion plates are available with transmissivity of 30%, 60%, 80%, or 90%.



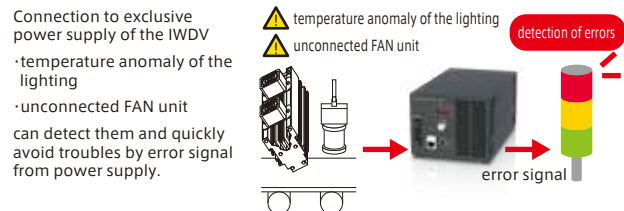
Various Size for Selection



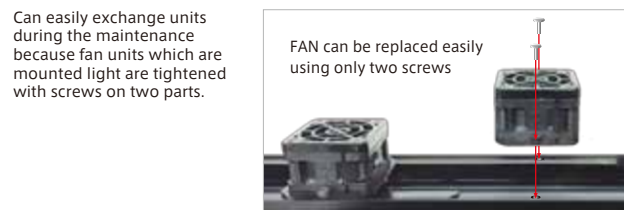
Extension cable and FAN drive cable set



Avoid trouble by error detection system.



Easy FAN replacement



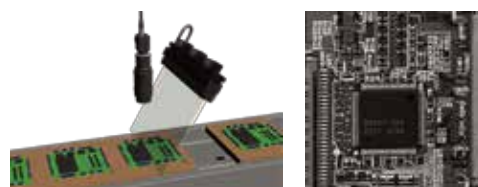
Power Supply(voltage control)

IWDV-300S-48
IWDV-600S-48

Output control:1000 levels
External Control:LAN/10-bit parallel

details are described in P97

Workpiece:Electronic component mounting board.



Light used:IDBB-LSRF300W

