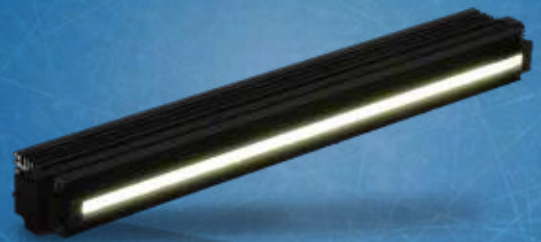


# 1,000,000 lx Natural Air Cooling Type Line Light IDBB-LSRH series

Achived the industry-leading high output power over 1,000,000 lx by natural air cooling.  
Capable of brightness adjustment in 100 mm increments from a PC with dedicated power supply application

- Special Optical Design
- Natural Air Cooling
- Power LEDs



- Realized 1,000,000 lx (WD50 mm) with natural air cooling.
- Capable of individual control in 100mm increments from a PC with dedicated power supply application.
- Lineup includes the emission light sizes from 100 to 3,000 mm in 100 mm increments.

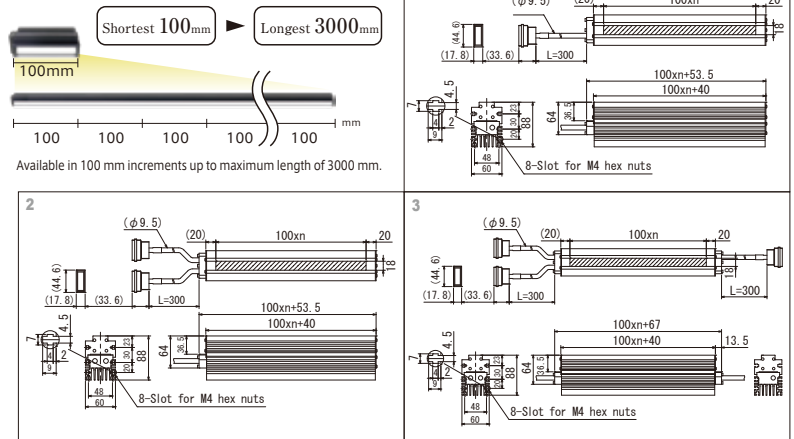
Model	Light Color	Face (mm)	Channel numbers	Drive System	Power Supply	Drawing
IDBB-LSRH100□	W B	30	1CH	Constant current	IMC-300M10-TP (P.95)	1 n=1
IDBB-LSRH200□	W B	60	2CH			2 n=2
IDBB-LSRH300□	W B	90	3CH			3 n=3
IDBB-LSRH400□	W B	120	4CH			4 n=4
IDBB-LSRH500□	W B	150	5CH			5 n=5
IDBB-LSRH600□	W B	180	6CH			6 n=6
IDBB-LSRH700□	W B	210	7CH			7 n=7
IDBB-LSRH800□	W B	240	8CH			8 n=8
IDBB-LSRH900□	W B	270	9CH			9 n=9
IDBB-LSRH1000□	W B	300	10CH			10 n=10
IDBB-LSRH1100□	W B	330	11CH	Constant current	IMC-600M20-TP (P.95)	11 n=11
IDBB-LSRH1200□	W B	360	12CH			12 n=12
IDBB-LSRH1300□	W B	390	13CH			13 n=13
IDBB-LSRH1400□	W B	420	14CH			14 n=14
IDBB-LSRH1500□	W B	450	15CH			15 n=15
IDBB-LSRH1600□	W B	480	16CH			16 n=16
IDBB-LSRH1700□	W B	510	17CH			17 n=17
IDBB-LSRH1800□	W B	540	18CH			18 n=18
IDBB-LSRH1900□	W B	570	19CH			19 n=19
IDBB-LSRH2000□	W B	600	20CH			20 n=20
IDBB-LSRH2100□	W B	630	21CH	Constant current	IMC-1000M30-TP (P.95)	21 n=21
IDBB-LSRH2200□	W B	660	22CH			22 n=22
IDBB-LSRH2300□	W B	690	23CH			23 n=23
IDBB-LSRH2400□	W B	720	24CH			24 n=24
IDBB-LSRH2500□	W B	750	25CH			25 n=25
IDBB-LSRH2600□	W B	780	26CH			26 n=26
IDBB-LSRH2700□	W B	810	27CH			27 n=27
IDBB-LSRH2800□	W B	840	28CH			28 n=28
IDBB-LSRH2900□	W B	870	29CH			29 n=29
IDBB-LSRH3000□	W B	900	30CH			30 n=30

□ represents light color(W=White, B=Blue).  
\*See page 113 for condensing lens and optical diffusion plate models.  
\*Condensing lens ILBBH□ and optional diffusion plate IKBB-LSRH□ can be mounted. □ represents size in 100 mm increments.  
We line up the condense lens from 100 to 1000 mm, and diffusion plate is from 100 to 1800 mm.  
When ordering, specify number and type of condensing lenses and diffusion plates required.  
diffusion plates are available with transmissivity of 30%, 60%, 80%, or 90%.

### Dedicated extension cable for IDBB-LSRH

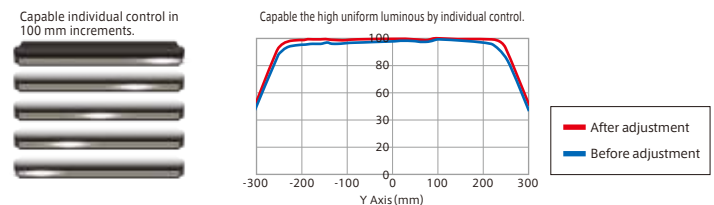
Model	Length (m)
I-CB-S1-HDN	1
I-CB-S2-HDN	2
I-CB-S3-HDN	3
I-CB-S5-HDN	5
I-CB-S7-HDN	7
I-CB-S10-HDN	10

### Various Size for Selection



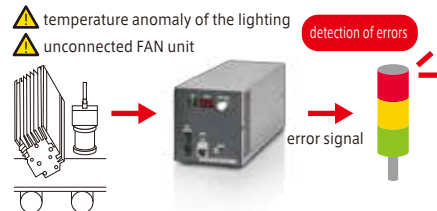
### Capable individual control in 100 mm increments.

Because it is possible to control individually in 100 mm increments by exclusive supply power IMC series, you can control dimming according to the situation. Furthermore, it is mounted offset dimming to go up and down while maintaining individual dimming setting.



### Avoid trouble by error detection system.

Connection to exclusive power supply of the IMC  
 • temperature anomaly of the lighting  
 • unconnected FAN unit  
 can detect them and quickly avoid troubles by error signal from power supply.



### Power Supply(current control)

## IMC series

Output control: 1000 levels  
(Capable individual control in 100mm increments.)  
External Control: LAN control

for details, described in P95

### Workpiece: Surface inspection of films.

Light used: IDBB-LSRH400W

