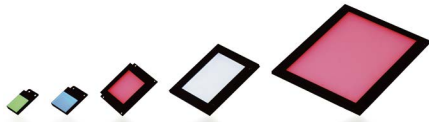


# Square Edge-Light IFLA·IFL series

Thin, uniform, flat-surface light emission  
with low power consumption and low heat generation

24V DC Models Available



## IFLA series

Thinner with higher uniformity than similar sizes in the IFL series.

Model	Light Color	Power Consumption (W)	Input Voltage	SAG (*)	Power Supply	Drawing
IFLA-25/25□	R	0.6	DC12V	FF	ILP-30M2(P.81) IDGB series(P.89) other, overdrive power supply etc.	1
	W	0.9		9D		
	B	0.5		A4		
IFLA-30/41□	R	1.2		F9		2
	W	1.7		BD		
	B	0.9		9D		
IFLA-30/80□	R	2.4	F8	3		
	W	2.6	97			
	B	1.7	9D			

\*□ represents light color (R=Red, W=White, B=Blue).

\*Input voltage is 12 V DC, but 24 V DC models are also available.

\*Please refer page 80 to confirm the details of DC 24V models.

\*Sizes other than those above are also available.

\*The SAG value indicates the maximum voltage setting for SAG power supplies. For details, see page 101.

## IFL series

Model	Light Color	Power Consumption (W)	Input Voltage	SAG (*)	Power Supply	Drawing
IFL-50/50□	R	2	DC12V	6E	ILP-30M2(P.81) IDGB series(P.89) other, overdrive power supply etc.	4
	DW B G	2.9		FF		
IFL-80/100□	R	3.4		6F		5
	DW B G	5.1		FF		
IFL-100/100□	R	3.9		70		6
	DW B G	5.8		FF		
IFL-135/180□	R	5.8		71		7
	DW B G	8.7		FF		
IFL-150/200□	R	6.8		72		8
	DW B G	10.1		FF		

\*□ represents light color (R=Red, DW=White, B=Blue, G=Green).

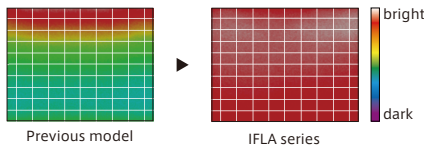
\*Input voltage is 12 V DC, but 24 V DC models are also available.

\*Please refer page 80 to confirm the details of DC 24V models.

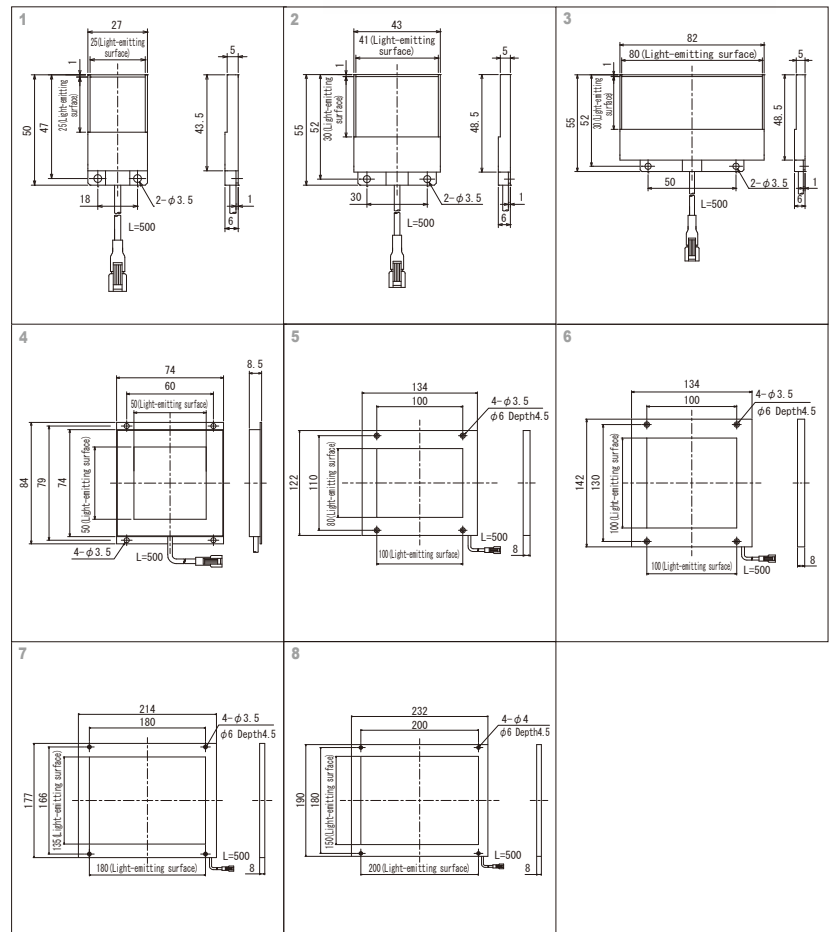
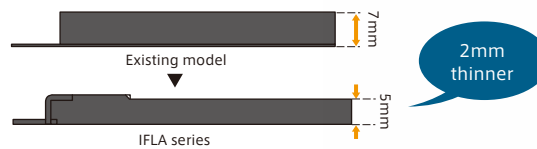
\*Sizes other than those above are also available.

\*The SAG value indicates the maximum voltage setting for SAG power supplies. For details, see page 101.

## Luminance Distribution Chart (Reference Values)

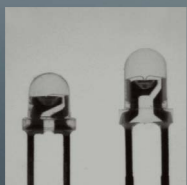


## IFLA 5mm thick light-emitting surface



## Effect

Clear silhouette images can be obtained simply by backlighting the subject.



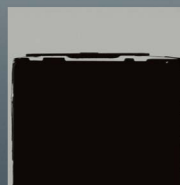
IFL-50/50B



IFL-80/100R



IFL-80/100B



IFL-80/100B

