

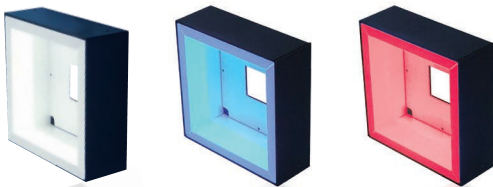
Square Flat-surface Light IPQC series

Indirect light with high luminance
and uniform oblique light



24V DC Models Available

Power LEDsc

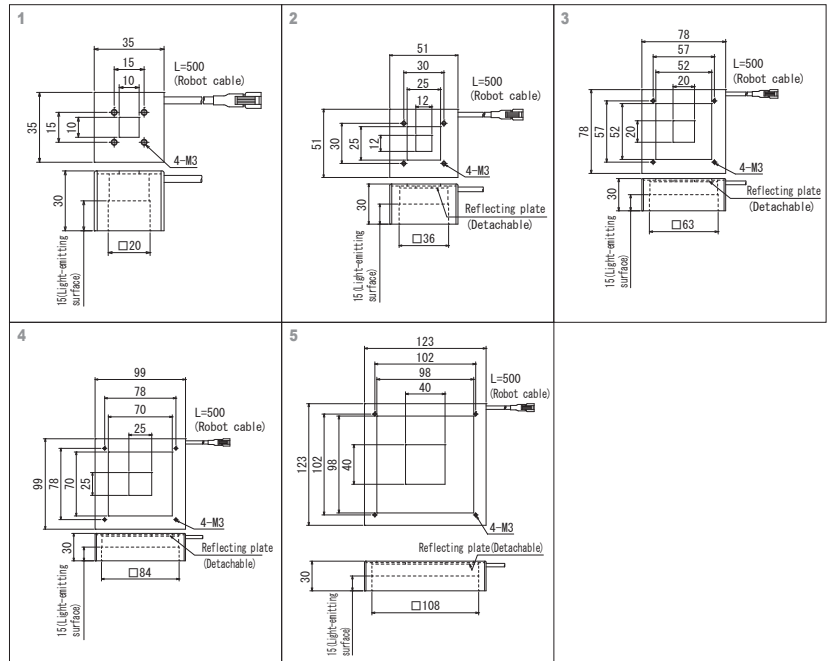


Model	Light Color	Power Consumption (W)	Input Voltage	SAG (*)	Power Supply	Drawing
IPQC-35□	R	4.2	DC12V	FF	ILP-30M2 (P.81) IDGBseries (P.89) other, overdrive power supply etc.	1
	W	4.7				
	B	4.7				
IPQC-51□	R	6.5		FF		2
	B	6.8				
IPQC-78□	R	11.5		FF		3
	B	12.5				
IPQC-99□	R	16.5		FF		4
	B	18				
IPQC-123□	R	21		FF		5
	W	24				
	B	22.5				

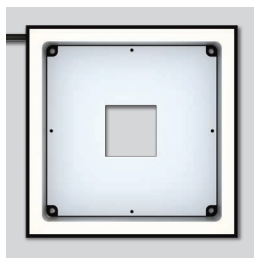
□ Represents light color (R=Red, W=White, B=Blue).

* Input voltage is 12 V DC, but 24 V DC models are also available.

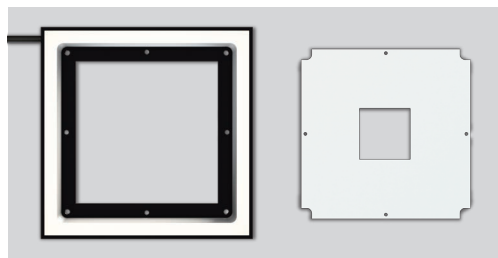
* The SAG value indicates the maximum voltage setting for SAG power supplies. For details, see page 101.



Shadowless lighting from the dome lighting



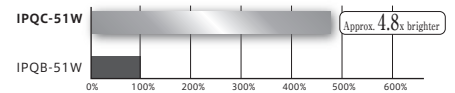
Standard Type



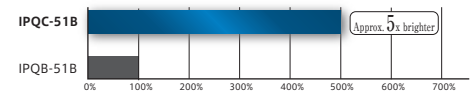
Removing reflective plate changes to shadowless lighting from the dome lighting.

Brightness Comparison With Previous Models (Reference Values)

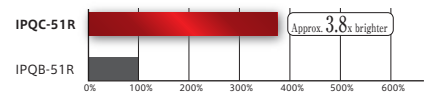
White lighting (WD10mm)



Blue lighting (WD10mm)



Red lighting (WD10mm)

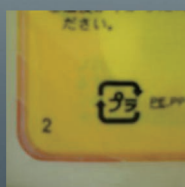


Effect

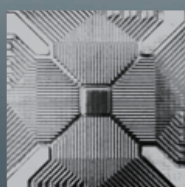
An image without surface reflection can be obtained by illuminating the subject with uniform oblique light.



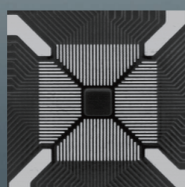
Ring light



IPQC-78W



Ring light



IPQC-99W

