

Narrow-angle light distribution coaxial Light IFVA series

High illuminance, High uniformity and Compact coaxial Light



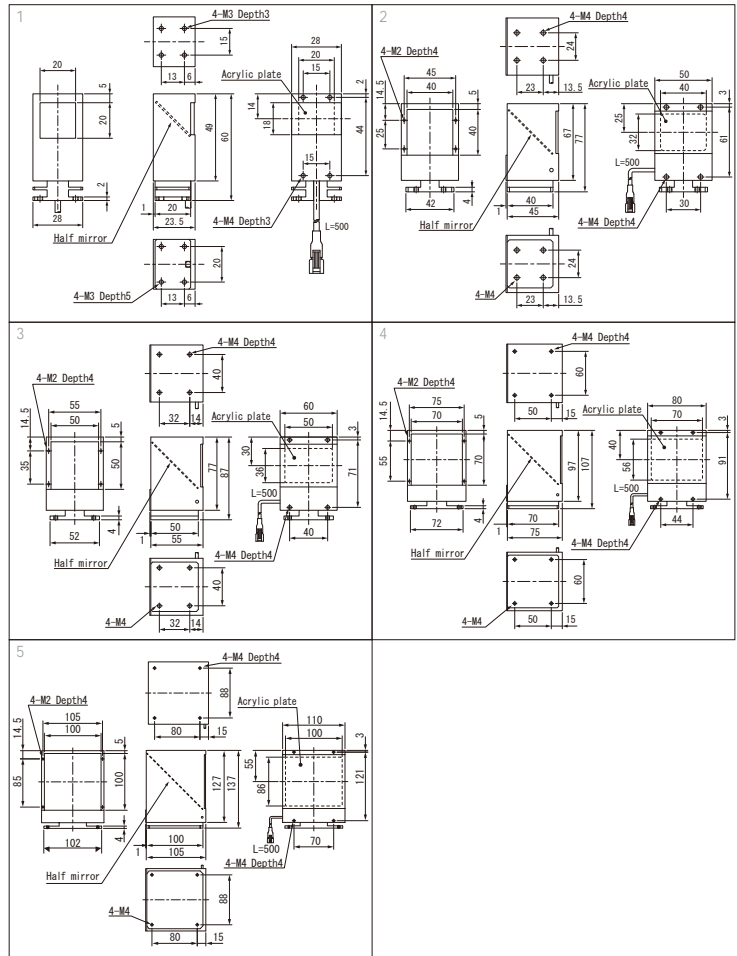
24V DC Models Available

Design registered

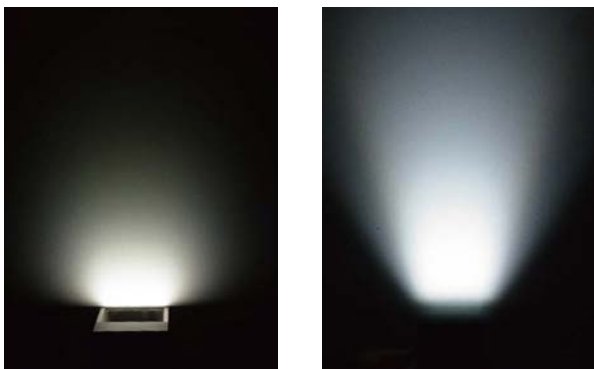


Model	Light Color	Power Consumption (W)	Input Voltage	SAG (*)	Power Supply	Drawing
IFVA-20□	W	4.2	DC12V	FF	ILP-30M2(P.81) IDGB series(P.89) other, overdrive power supply etc.	1
	R			FF		
	B			FF		
IFVA-40□	W	10.5		98		2
	R			AA		
	B			98		
IFVA-50□	W	14	B9	3		
	R		A7			
	B		B9			
IFVA-70□	W	24	B9	4		
	R		D9			
	B		B9			
IFVA-100□HV	W	32	DC24V	-	ILP-60M2-24(P.81) IDGB-24 series(P.89)	5
	R					
	B					

□ represents the color, (W=White, R=Red, B=Blue).
 *Input voltage is DC12V, but DC24V models are also available.
 *Optional polarizing plate can be attached. The plate can reduce glares and reflection of objects.
 *The SAG value means the maximum voltage setting for SAG power supplies. For details, see page 101.



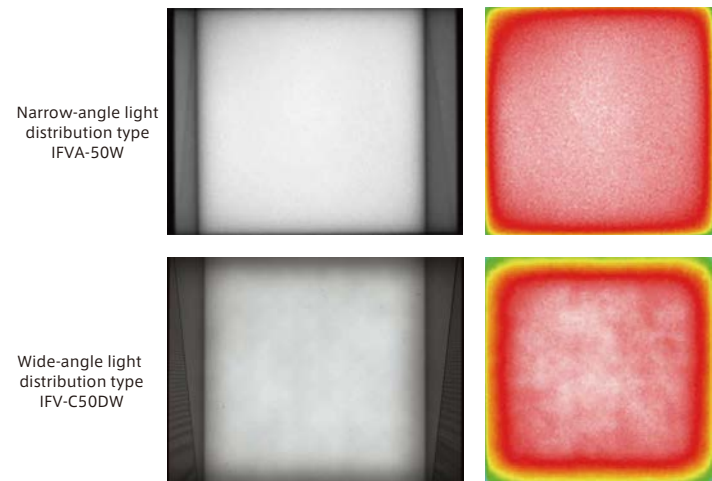
Narrow-angle light distribution character



Wide-angle light distribution type IFV series
 Narrow-angle light distribution type IFVA series

High parallelism radiation can clearly emphasis defects and features of objects.

High uniformity



Narrow-angle light distribution type IFVA-50W

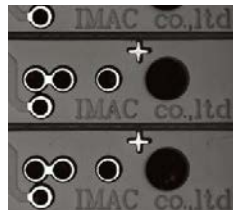
Wide-angle light distribution type IFV-C50DW

High uniformity: Wider areas can be irradiated.

Comparison of the illuminance

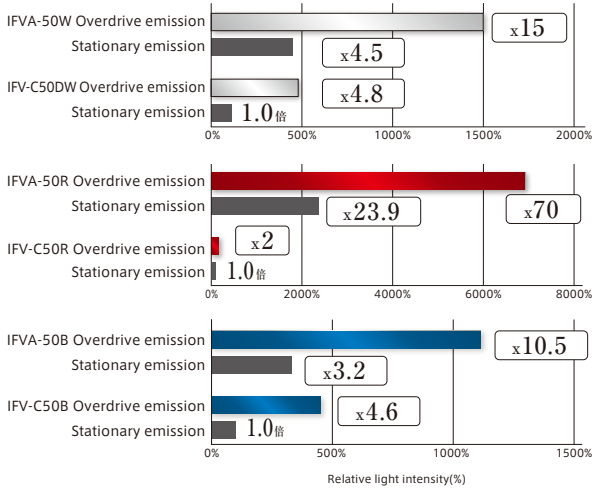


Diffusing type
IFV-C50DW
Shutter speed: 1/10,000
Stationary light emission: 100%

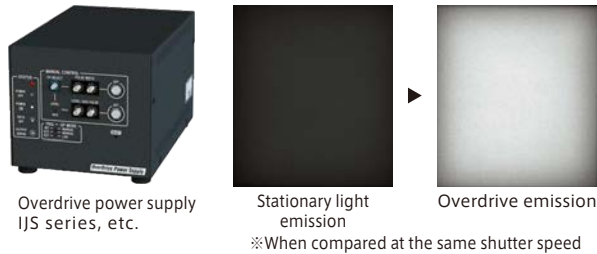


Narrow-angle light distribution type
IFVA-50W
Shutter speed: 1/10,000
Stationary light emission: 100%

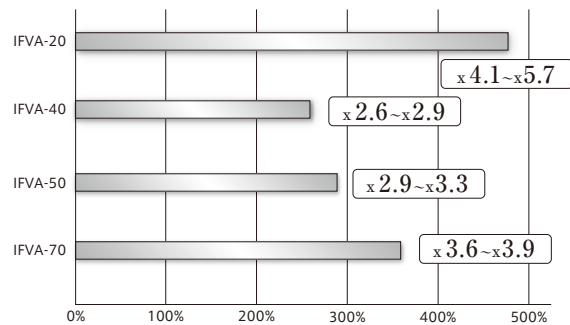
Light intensity comparison with same window size IFVA-50 (WD=50mm)



Overdrive power supply enable 250% higher illuminance (than stationary light emission)



Light intensity comparison of stationary light and overdrive light (WD=50mm, stationary light is taken for 100%)

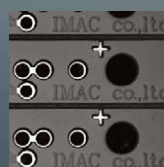


Effect

Luminance comparison under shutter speed 1/10,000 (Stationary light is regarded as 100%)



IFV-C50DW



IFVA-50W

Imaging sample



Button battery

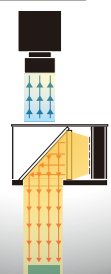


Alignment mark

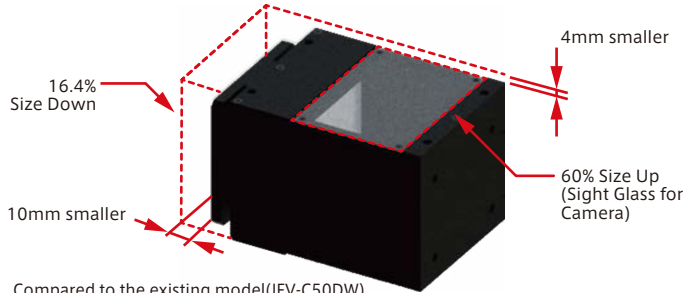


Connector

LIGHTING STRUCTURE



Significant improvement of the housing design. Much more compact and higher-function!

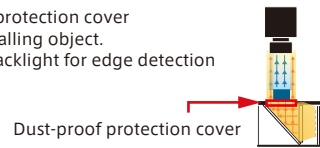


Compared to the existing model(IFV-C50DW),

- ①The body is 16.4% smaller thanks to chip LED.
 - ②Broad view field:The opening(camera side) is 60% larger.
 - ③Easier installation:No overhangs of screws on the body(camera side).
 - ④Higher heat dissipation, thanks to the all aluminum body and its special heat sink design
- ※Please note that the case gets hot.

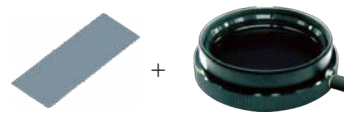
Abundant option and various usage

- ①Dust-proof protection cover
For dust and falling object.
Suitable for backlight for edge detection



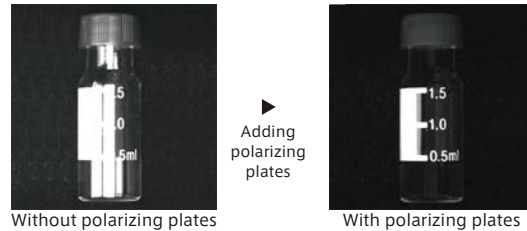
Model	Light Used
IKFVA-40-PRC	IFVA-40□
IKFVA-50-PRC	IFVA-50□
IKFVA-70-PRC	IFVA-70□
IKFVA-100-PRC	IFVA-100□HV

- ②Polarizing plate
Its high illuminance improves the effect of polarizing plates. By using polarizing filter for lens (IMPL series), it can be used in much wider use scene

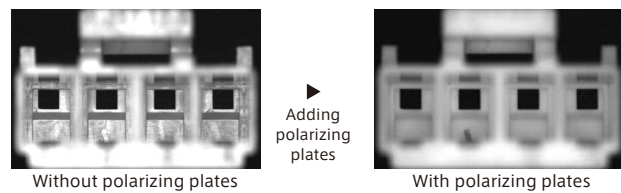


Model	Light Used
IKFVA-20-PL	IFVA-20□
IKFVA-40-PL	IFVA-40□
IKFVA-50-PL	IFVA-50□
IKFVA-70-PL	IFVA-70□
IKFVA-100-PL	IFVA-100□HV

Optional polarizing plate can remove glares on a curved surface



Without polarizing plates, halation is generated on the bottle surface, and printing inspection is difficult. However, with polarizing plates, halation can be removed, and printing inspection is easy.



Without polarizing plates, the contrast between inside of the connector and defect is not clear. With polarizing plates, the contrast between them is clear, and recognition of defects is easy.