

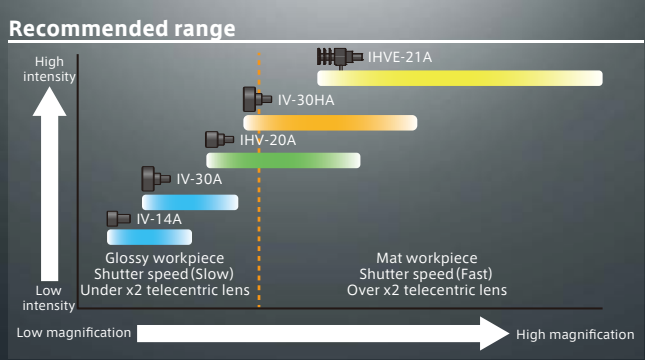
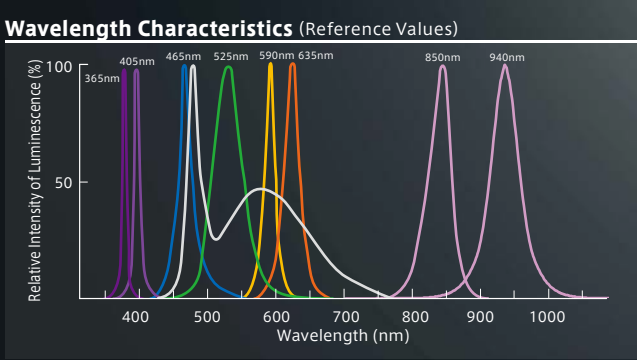
Coaxial Spot Light IV-14·IV-30·IHV-20 IHVE-21 series

Ultra high-intensity coaxial light
IR 850nm·940nm UV365-405nm are available.



Registration of Design Completed
※IHVE-21A

Power LEDs
※Except IV-14mkII



IHVE-21A

Achieved the top class brightness in industry, by our original optical design ! It's suited for high magnification.

Imaging of two-dimensional codes of circuit boards

Light used: IHVE-21AW
White color temperature: 6,500K (typ)

IHV-20A

Compact and high output! Available up to 8 times brightness by overdrive. It's able to use high and low magnification range.

Suited for high magnification lens

Light used: IHV-20AW
White color temperature: 6,500K (typ)

IV-30A

Achieved high output of DC12V by our original optical design. It's useful for several case.

Cable capable of 90° movement

IV-30A series

White color temperature: 4,900K (typ)

IV-14A

Achieved the smallest lighting in the industry by our original optical design.

Mass 15g

Smallest size in the IV-14A series

Compact installation space

White color temperature: 4,900K (typ)

Note: Color temperature (typ) has described a representative value. Please contact us for further details.

- INDEX
- Line Light
- Ring Light
- Bar Light
- Transmissive Light
- Dome Light
- Coaxial Light
- Special Light
- Power Supplies
- Optional Accessories



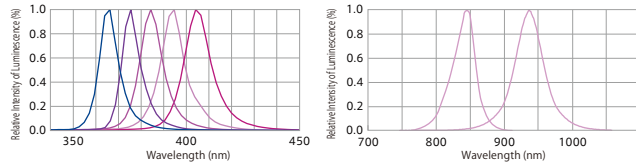
Model	Light Color	Power Consumption (W)	Input Voltage	Power Supply	Drawing
IV-14□mk II	R DW B G	0.24W	DC12V	ILP-30M2 (P.81) IDGB series(P.89) other, overdrive power supply etc.	1
IV-14A■	R W B G	1W			2
IV-30A■	R W B G	2W			3
IV-30HA■	R W B G	2W			4

Model	Light Color	Input Current	Power Supply	Drawing
IHV-20A▼	R W B G Y	350mA	ILC-350M2-VI (P.82) IDCA series(P.94)	5
IHVE-21A▼	R W B G Y	700mA	ILC-700M2-VI (P.82) IDCA series(P.94)	6

□ represents light color (R=Red, DW=White, B=Blue, G=Green).
 ■ represents light color (R=Red, W=White, B=Blue, G=Green).
 ▼ represents light color (R=Red, W=White, B=Blue, G=Green, Y=Yellow).

IR·UV Coaxial Spot Light

Model	Light Color	Input Current	Power Supply	Drawing
IHV-20AUV-365	UV(365)	350mA	ILC-350M2-VI(P.82) IDCA series(P.84)	5
IHV-20AUV-375	UV(375)			
IHV-20AUV-385	UV(385)			
IHV-20AUV-395	UV(395)			
IHV-20AUV-405	UV(405)			
IHV-20AIR-850	IR(850)	700mA	ILC-700M2-VI(P.82) IDCA series(P.84)	6
IHV-20AIR-940	IR(940)			
IHVE-21AUV-365	UV(365)			
IHVE-21AUV-375	UV(375)			
IHVE-21AUV-385	UV(385)			
IHVE-21AUV-395	UV(395)			
IHVE-21AUV-405	UV(405)			
IHVE-21AIR-850	IR(850)			
IHVE-21AIR-940	IR(940)			



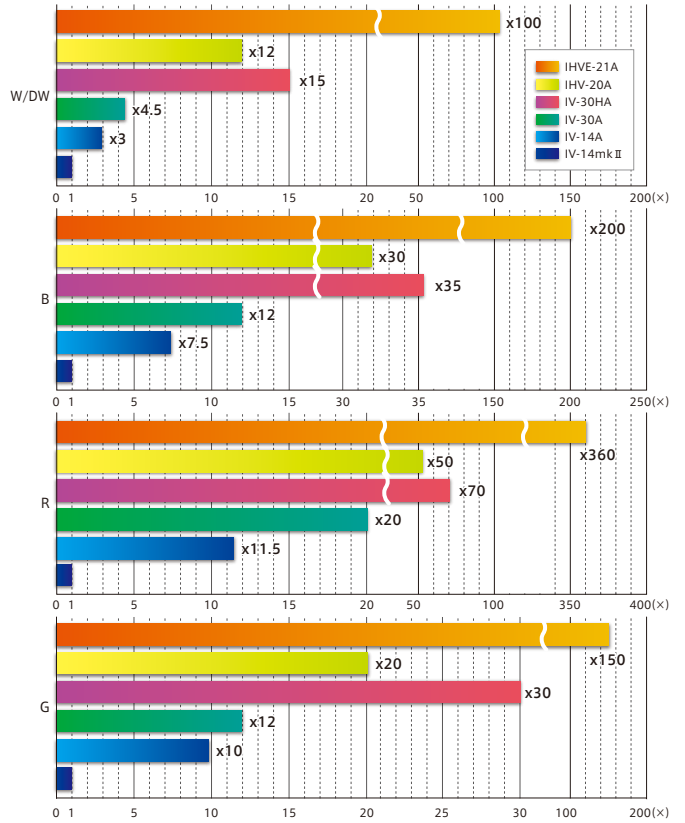
Optional resistance Box (IHV/IHVE)



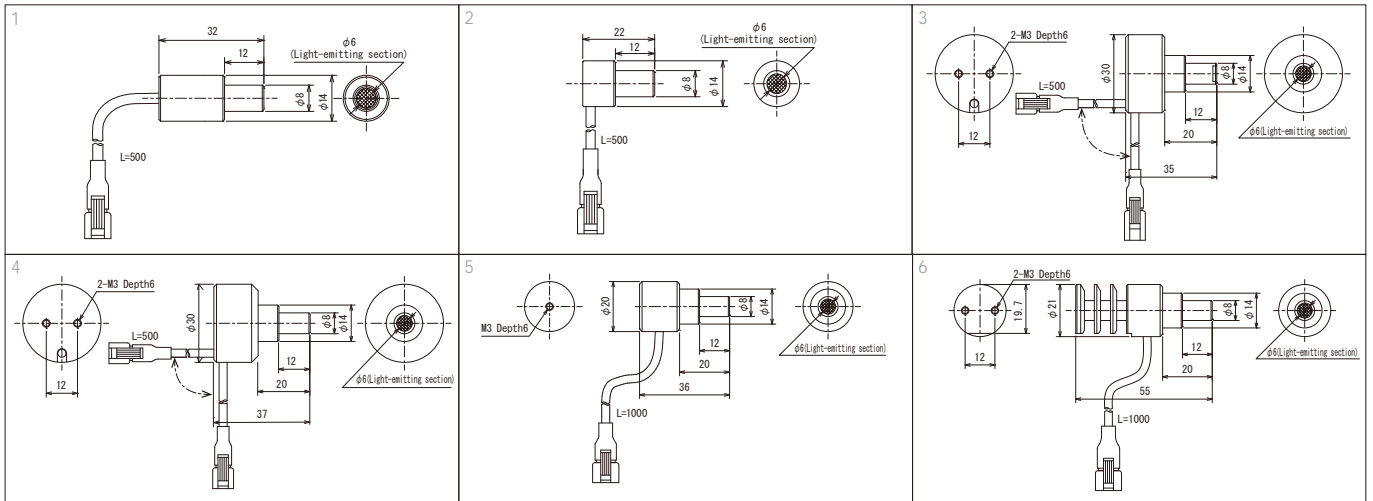
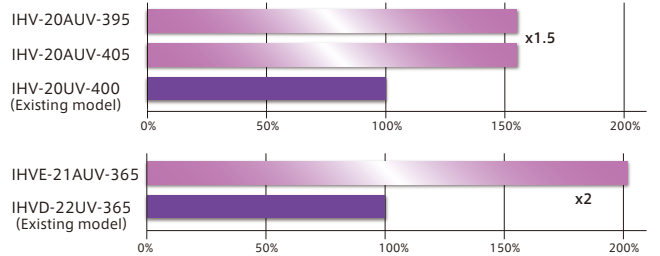
Need it at the time of using DC 12V output power supply.
 Required when using the IHV or IHVE series with a DC12V output power supply such as the ILP or IDGB series.
 It is also required when you use overdrive power supply.

For details, see page 71.

Illumination comparison of each color (Reference Values) Relative brightness (IV-14mkII standard)

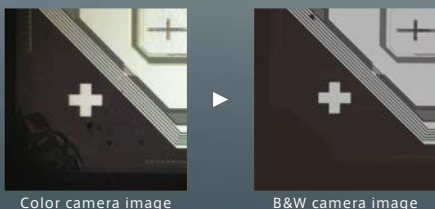


Comparison of UV irradiance (Reference Values)



Effect

Can be used to capture images with a shutter speed of 1/20,000. Light used: IHVE-21AW



LIGHTING STRUCTURE

