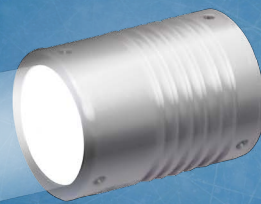


Collimate Light IBF series

LED Parallel light source Brightness conventional ratio 1.5 times
Capable of illuminating objects several dozen meters away



Special Optical Design Power LEDs



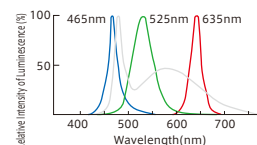
Model	Light Color				Input Voltage	Input Current	Power Supply	Drawing	
IBF-LXS20A	R	W	B	G	700mA	350mA	ILC-350M2-VI(P.82)	1	
IBF-LXS30A	R	W	B	G			2		
IBF-LX30A	R	W	B	G			UV (405)	IR (850,940)	3
IBF-LX40A	R	W	B	G			4		
IBF-LX60A	R	W	B	G			5		
IBF-CB100	R	W	B	G	DC12V	Power consumption 9.5W	ILP-30M2 (P.81).etc	6	

1IBF-LXS and IBF-LX can be connected to a not applied power supply if you use the resistance BOX.
□ represents light color (R=Red, W=White, B=Blue, G=Green, UV-(405)=Ultraviolet, IR-(850,940)=Infrared).
■ represents light color (R=Red, W=White, B=Blue, G=Green, IR-(860,950)=Infrared).
▼ represents light color (R=Red, W=White, B=Blue, G=Green).

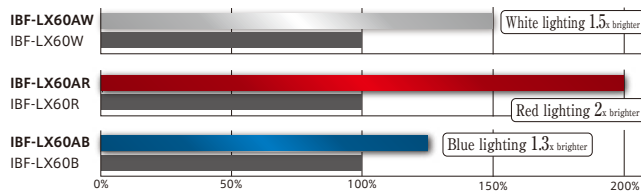
Replacement of laser pointer (For visual inspection)



Wavelength Characteristics



Brightness Comparison With Previous Models (Reference Values)

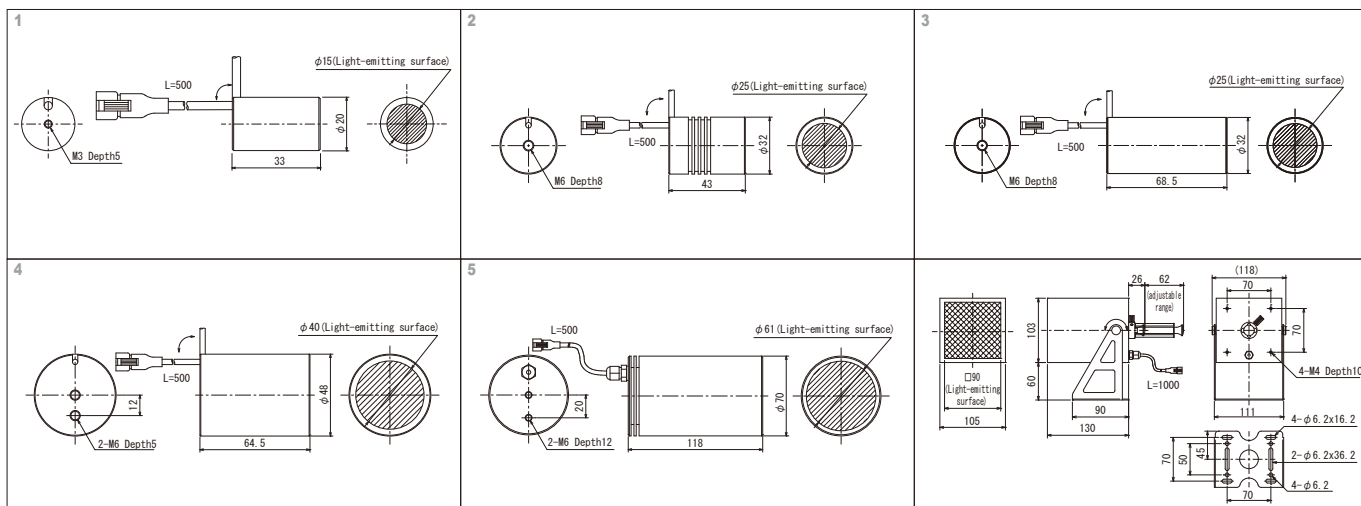


Optional resistance Box (IBF-LXS/LX)



Required when using the 12V DC out put power supply
With resistance box, it can be used with non-applicable power supply (e.g. ILP and IDGB).
It is also required when you use overdrive power supply.

For details, see page 71.



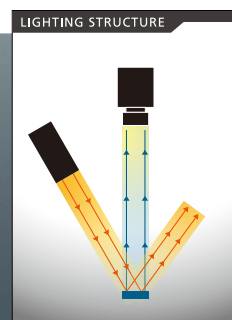
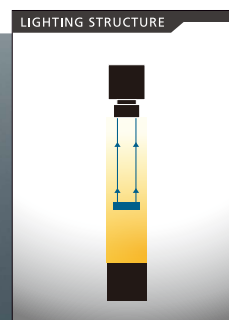
Effect



Illuminating parallel light to an edge of two irregular objects with some depths can only highlight the illuminated edge.



In the case of diffusing light, cannot accurately project on a silhouette because light go around an object, but you can measure the dimensions by using parallel light.



INDEX
Line Light
Ring Light
Bar Light
Transmissive Light
Dome Light
Coaxial Light
Special light
Power Supplies
Optional Accessories