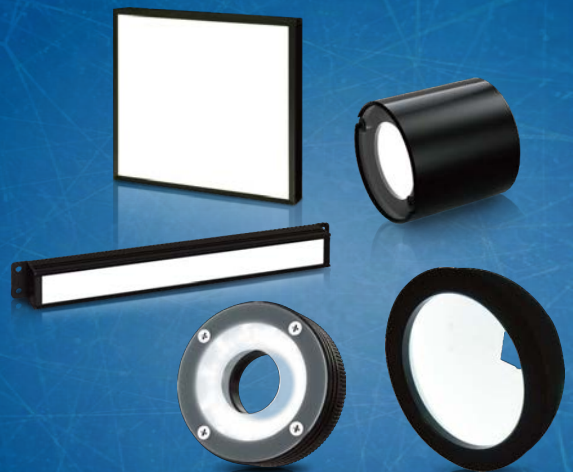


# Overdrive Light IS series

Super high illuminance: 26 times brighter than stationary light emission models!



Power LEDs\*

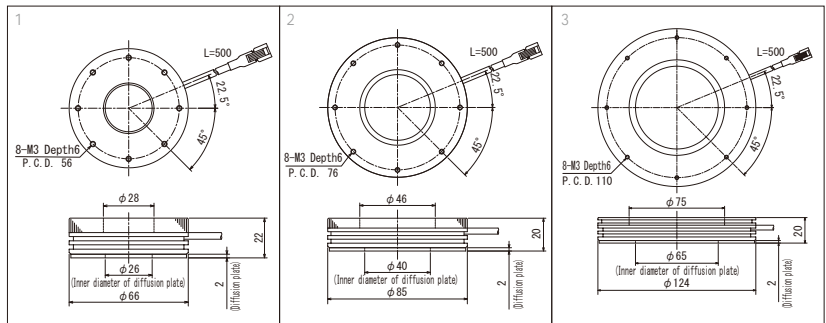
\*Excluding ISHM \*Cannot be used for continuous lighting

## Ring type: ISHRA series



Model	Light Color	Required power capacity(W)	Peak current (Ao-p)	Input Voltage	SAG (*)	Drawing
ISHRA-60WS	W	10	3.2	DC36V	FF	1
ISHRA-80WS	W	10	5.6		FF	2
ISHRA-120WS	W	15	8.4		FF	3

\*The SAG value means the maximum voltage setting for SAG power supplies. For details, see page 101.

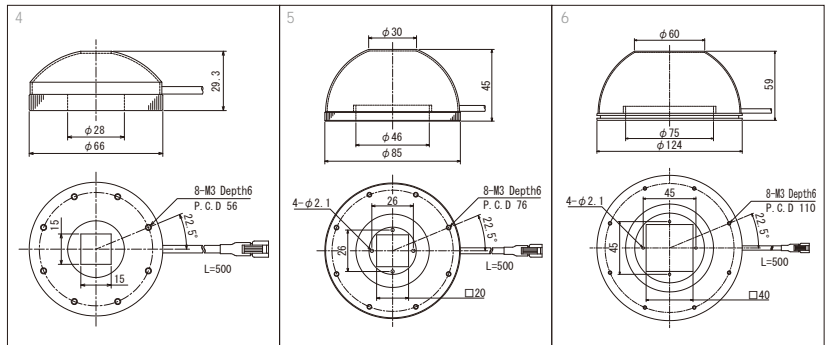


## Dome type: ISDDA series



Model	Light Color	Required power capacity(W)	Peak current (Ao-p)	Input Voltage	SAG (*)	Drawing
ISDDA-KH60W	W	10	3.2	DC36V	FF	4
ISDDA-KH80W	W	10	5.6		FF	5
ISDDA-KH120W	W	15	8.4		FF	6

\*The SAG value means the maximum voltage setting for SAG power supplies. For details, see page 101.

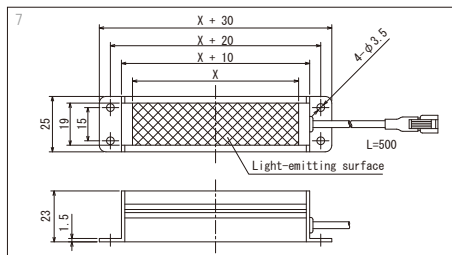


## Bar type: ISDBA-CP series

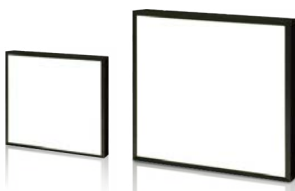


Model	Light Color	Required power capacity(W)	Peak current (Ao-p)	Input Voltage	SAG (*)	Drawing
ISDBA-CP50WS	W	10	2.5	DC36V	FF	7
ISDBA-CP100WS	W	10	4.6		FF	
ISDBA-CP150WS	W	15	6.5		FF	
ISDBA-CP200WS	W	15	8.4		FF	

\*The SAG value means the maximum voltage setting for SAG power supplies. For details, see page 101.

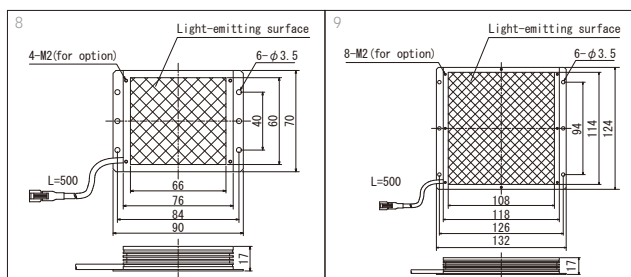


## Back light type: ISHM series



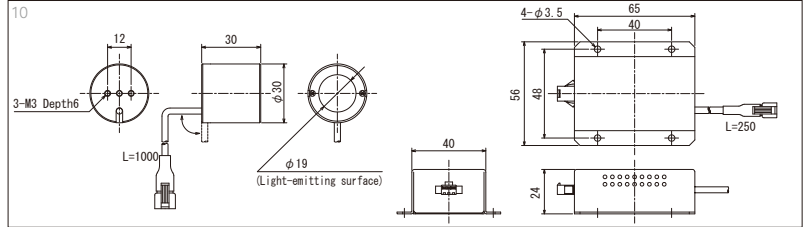
Model	Light Color	Required power capacity(W)	Peak current (Ao-p)	Input Voltage	SAG (*)	Drawing
ISHM-66/60W	W	10	3.2	DC36V	FF	8
ISHM-108/114W	W	10	8.4		FF	9

\*The SAG value means the maximum voltage setting for SAG power supplies. For details, see page 101.



INDEX  
Line Light  
Ring Light  
Bar Light  
Transmissive Light  
Dome Light  
Coaxial Light  
Special Light  
Power Supplies  
Optional Accessories

## Spot type:ISHVA-SP series

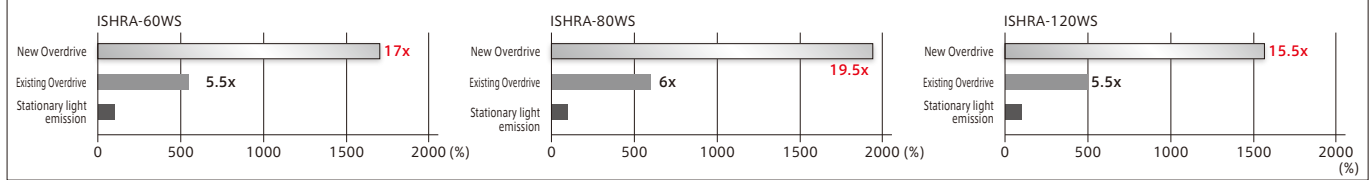


Model	Light Color	Required power capacity(W)	Peak current (Ao-p)	Input Voltage	SAG (*)	Drawing
ISHVA-SP30L-W	W	10	3	DC36V	FF	10

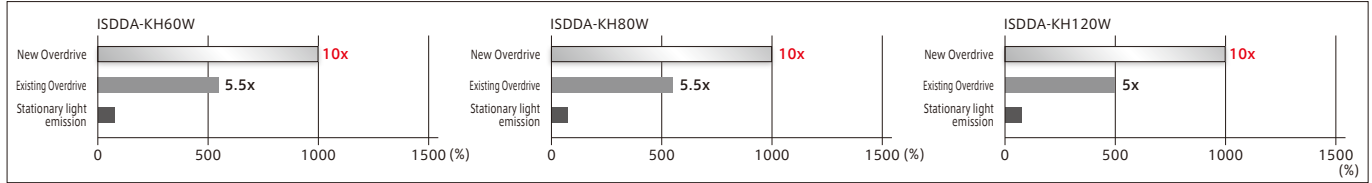
\*The SAG value means the maximum voltage setting for SAG power supplies. For details, see page 101.

## Brightness Comparison (Reference Values)

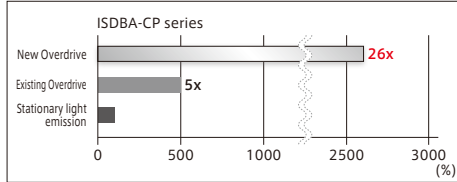
### ISHRA series



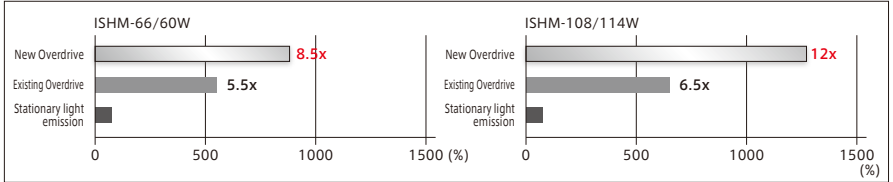
### ISDDA series



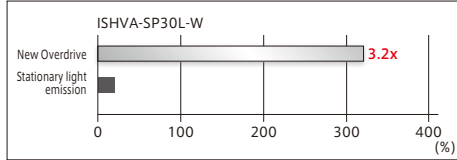
### ISDBA-CP series



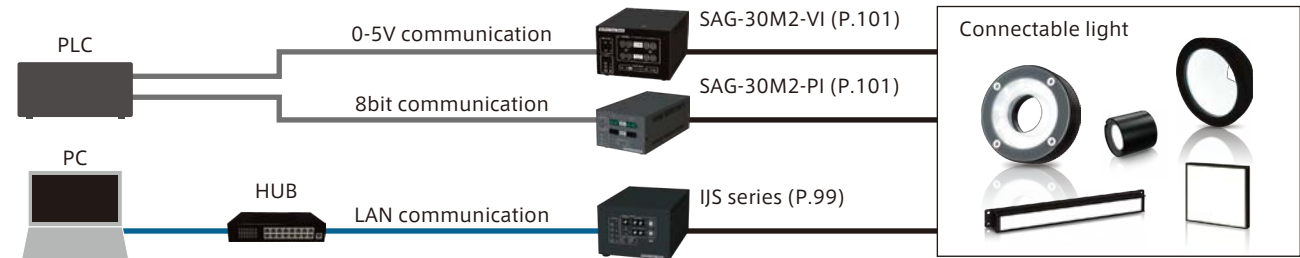
### ISHM series



### ISHVA series



## Connection example with light, power supply, and equipment



Models	Channels	Capacity/CH	External Control	Output Voltage	Pulse width	Output mode	Input Voltage	Pecularity
SAG-30M2-VI	2	30W	0-5V	DC6~36V	10~999 μs	Level/Edge	AC100~240V	Analog Control
SAG-30M2-PI	2	15W	8bit	DC12~36V		Edge		Digital Control
IJS-30M2-TP	2	15W	LAN	DC6~36V	10~999 μs	Edge	AC100~240V	·LAN control (256 levels variable output voltage) ·Multi-channel connection ·Connection Ports:4 ports
IJS-30M3-TP	3	10W						
IJS-30M4-TP	4	10W or 5W						
IJS-30M6-TP	6	5W						
IJS-40M4-TP	4	10W						
IJS-40M8-TP	8	5W						

## Extension Cable

Model(Standard Cable)	Model(Robot Cable)	Length(m)
I-CB-S1-NVD	I-CB-S1R-NVD	1
I-CB-S2-NVD	I-CB-S2R-NVD	2
I-CB-S3-NVD	I-CB-S3R-NVD	3
I-CB-S4-NVD	I-CB-S4R-NVD	4
I-CB-S5-NVD	I-CB-S5R-NVD	5
I-CB-S10-NVD	I-CB-S10R-NVD	10

