

# Constant-current Power Supply for IDBB-LSRH IMC series

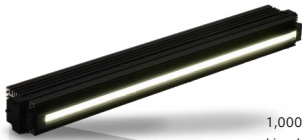
Capable of 1,000-level output control in 100mm increments  
You can adjust the uniformity in the lighting side.



• Power supply for IDBB-LSRH line sensor light.  
• Since it's a constant current control power supply, it's suited for a line sensor camera and a high-speed shutter camera.

Model	IMC-300M10-TP	IMC-600M20-TP	IMC-1000M30-TP
Input Voltage	AC100~240V		
Operating Frequency	50/60Hz		
Capacity	30W/CH		
Output Channel	10CH	20CH	30CH
Control Method	Variable Output Current System		
External Control	External Output Control(LAN communication)		External ON/OFF control
Applicable size	100~1000	1100~2000	2100~3000
Drawing	1	2	3

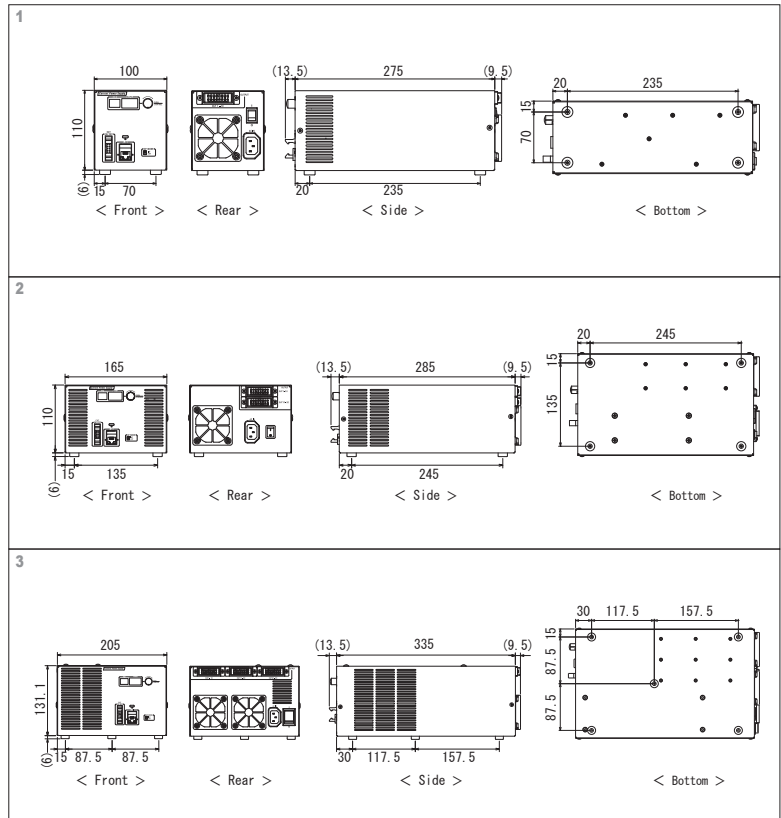
## Supported Lights



1,000,000 lx Natural Air Cooling Type  
Line Light  
IDBB-LSRH series (page 14)

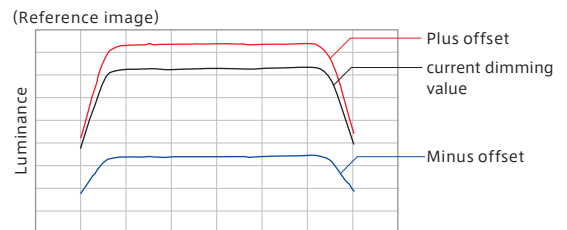
## Connecting cable

Model	Length (m)
I-CB-S1-HDN	1
I-CB-S2-HDN	2
I-CB-S3-HDN	3
I-CB-S5-HDN	5
I-CB-S7-HDN	7
I-CB-S10-HDN	10

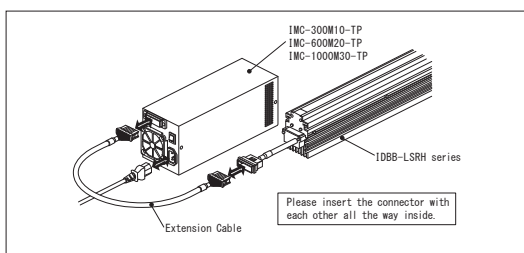


## For offset output

Offset means that the increase or decrease the output control value while holding the light control balance with the current setting of each CH. It's able to output control while holding the light control balance by using this function.



## Configuration example



## External ON/OFF control cable

Control cable for outputting external ON/OFF signal and error status signal.

Model	Length (m)
IC-MIL-10-1	1
IC-MIL-10-2	2
IC-MIL-10-3	3
IC-MIL-10-5	5
IC-MIL-10-10	10

