

Lighting Feedback Unit IFBU-SET

Automatic adjustment of power supply output
by detecting changes in light intensity
Maintaining the constant light intensity at anytime

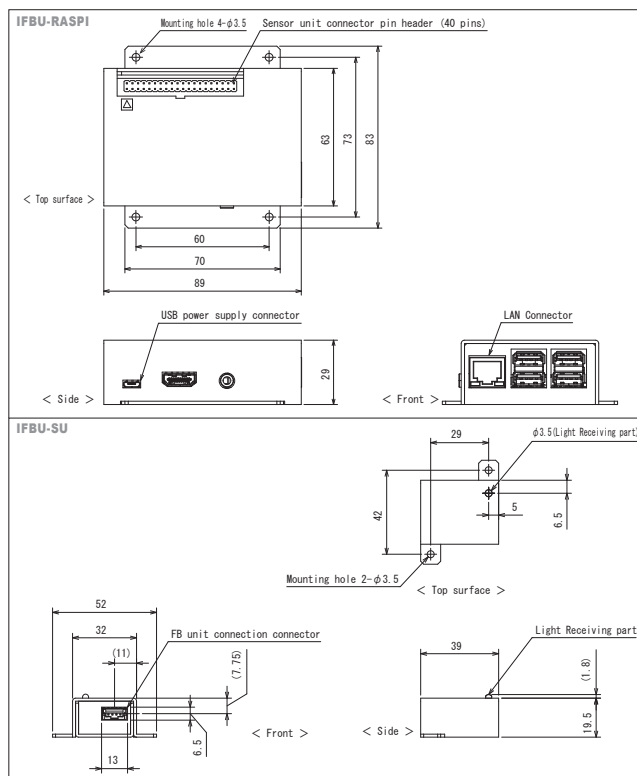


- IFBU-SET is configured with the sensor unit, IFBU-SU, FB unit, IFBU-RASPI, and the connecting cable, IC-MIL-40-2. The functions can be expanded by connecting with the corresponding power supply.
- Constant light intensity can be maintained by adjusting the power supply output with the FB unit based on the the light intensity reception information from the sensor unit.
- Corresponds to the standard lighting in the entire visible light range from blue to red listed in our catalog.
- A maximum of 4 units can be connected to each power supply via HUB.
- For the control, dedicated software is prepared that can set upper and lower limits for changes in light intensity and set the feedback control timing.
- As there is a setting value storage function, there is no need to prepare a computer beyond the initial setup or settings change.
- The FB unit can be mounted freely with its compact design. Also, a sensor unit designed to handle temperature changes into consideration can be installed anywhere.
- The FB unit operates with DC input (AC adapter and USB cable included).

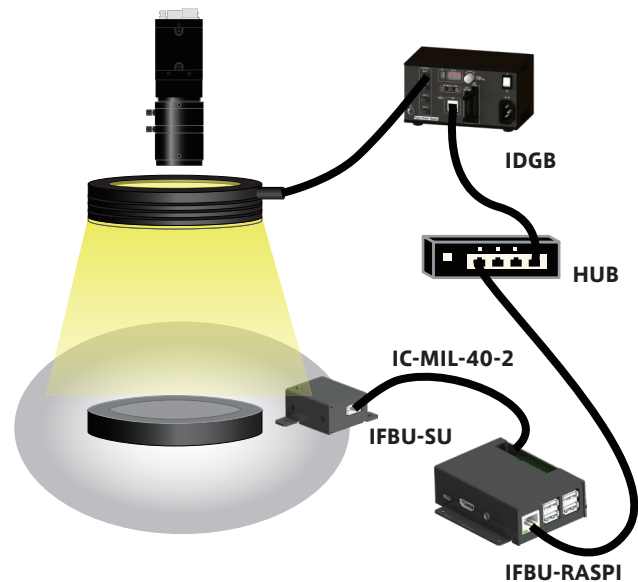
Power Supply Specifications

Product name	Feedback unit
Model	IFBU-SET
Power Supplies	IDGB-□-TP / PI, IDGB-□-PG-TP... 12V power supply (LAN specification) IDGB-□-24-TP / PI (-T), IDGB-□-PG-24-TP (-T) ... 24V power supply (LAN specification)
Power supply control channel number	Max 4CH
FB Mode	sensor mode I/O mode
FB Upper Limit Setting	0 ~ 10 % ※Sensor Mode
FB Lower Limit Setting	-5 ~ 0 % ※Sensor Mode
Sampling Cycle	0.1 ms ~ 1000 ms ※Sensor Mode
FP Control Cycle	0.1 s ~ 60 s ※Sensor Mode
Calibration	invalid time : 0 ~ 60s、 Valid time: 1 to 60s ※Sensor Mode
Log Storage Capacity	File size max. : 4 Mbyte Log size to be saved at one time: (Sensor mode: 460 bytes, I/O mode: 36 bytes)
Operating Temperature/Humidity	Temperature : 0 ~ +40 °C、 Humidity : 20 ~ 70 %RH (No condensation)

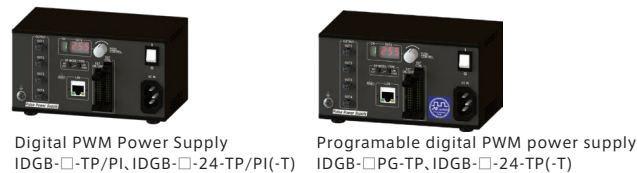
* □ represents symbols such as power supply capacity and number of channels.
* When the input voltage is 24V DC specification, the symbol of "-T" is inserted at the end of model.



Configuration example of use

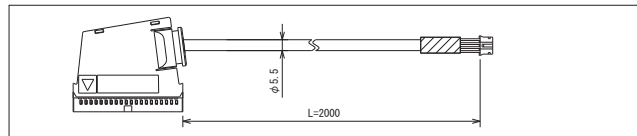


Connectable supply



Connection cable: IC-MIL-40-2

Used for connection between FB units and sensor units.



INDEX

Line Light

Ring Light

Bar Light

Transmissive Light

Dome Light

Coaxial Light

Special Light

Power Supplies

Optional Accessories