

External Control Cable

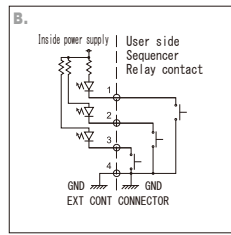
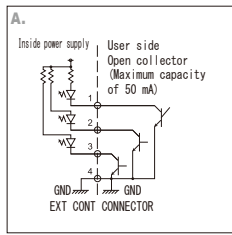
ON/OFF Cable 2 Channel / IC-CB-D series

Power Supply: IDPA-30M2(H), IWDV-300SL-48

Pin No.	Wire Color	Model	Length (m)	Pin No.	Name of Signal
1	White	IC-CB-D1	1	1	LAMP1 ON/OFF
2	Green	IC-CB-D2	2	2	LAMP2 ON/OFF
3	Red	IC-CB-D3	3	3	External Control Switch
4	Black	IC-CB-D4	4	4	GND
		IC-CB-D5	5		
		IC-CB-D7	7		
		IC-CB-D10	10		

*Cables are also available in lengths other than those indicated above.

Example of External ON/OFF Connection (2-channel Power Supply Unit)



A current of about 10mA is applied between connector pins 1, 2, and 3 and pin 4. Use an open-collector circuit with a capacity of about 50mA to be on the safe side.

When short-circuiting between pins 3 and 4 in the external ON/OFF control connector, the connector is switched to the external control. (The LED lighting connected to the 2 channels is turned off.)

When short-circuiting between pins 1 and 4 in addition to the above, the LED light connected to LAMP 1 is turned on. In the same way, when short-circuiting between pins 2 and 4, the LED light connected to LAMP 2 is turned on. (Switching of the external ON/OFF control is enabled on both channels at the same time.)

ON/OFF Cable / IC-CB-8CH series

Power Supply: IDPA-50M6(H), IDPA-100M6(H)

Pin No.	Wire Color	Pin No.	Wire Color	Model	Length (m)	Pin No.	Name of Signal	Pin No.	Name of Signal
1	White	6	Gray	IC-CB-8CH-1	1	1	LAMP1 ON/OFF	6	LAMP6 ON/OFF
2	Yellow	7	Orange	IC-CB-8CH-2	2	2	LAMP2 ON/OFF	7	NC
3	Brown	8	Water	IC-CB-8CH-3	3	3	LAMP3 ON/OFF	8	NC
4	Green	9	Red	IC-CB-8CH-4	4	4	LAMP4 ON/OFF	9	External Control Switch
5	Blue	10	Black	IC-CB-8CH-5	5	5	LAMP5 ON/OFF	10	GND
				IC-CB-8CH-10	10				

*Cables are also available in lengths other than those indicated above.

Output Control Cable (For S2/S4 Models) / IC-MCS2 series

Power Supply: IDGB series(S2/PI, S4/VI), IDCA series(-S2, -S4)

Model	Length (m)
IC-MCS2-1	1
IC-MCS2-2	2
IC-MCS2-3	3
IC-MCS2-5	5
IC-MCS2-10	10

*Is the RS-232C communication as well as the communication cable to be used in the RS-485 communication.

Crossover Cable For S4 Model / IC-MCS4 series

Power Supply: IDCA series(-S4), IDGB series(-S4/VI)

Model	Length (m)
IC-MCS4-1	1
IC-MCS4-2	2
IC-MCS4-3	3
IC-MCS4-5	5
IC-MCS4-10	10

*This cable is to be used for cooperation of the RS-485 communication.