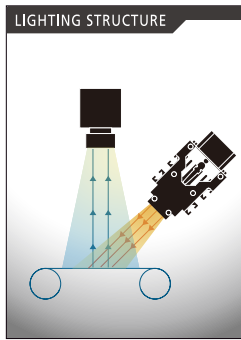
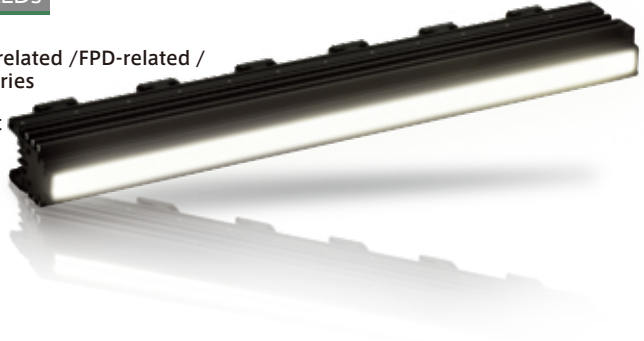


# 1,300,000 Lx ~Line illumination (Forced Air Cooling) [IDBB-LSRF Series]

Achieves a high intensity of over 1,300,000Lx!  
Making it capable of illuminating objects located several dozen meters away

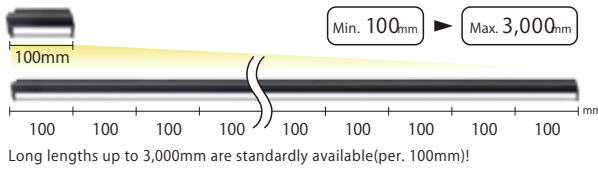
Special Optical Design | FAN Cooling | Power LEDs

- Applications**
- High-performance film/Paper, Textiles and Fiber-related / FPD-related / Steel/Non-ferrous metals/Metal/Glass etc. industries
  - Surface scratch/Dirt/Particle/MURA inspection.etc
  - Electronic components etc. industries
  - Pattern and scratch inspection of PCBs.etc



- Achieve high output of 1.3 million lx (WD=50mm) or more through FAN cooling
- Available in standard product lineups from 100mm to 3,000mm(per. 100mm)

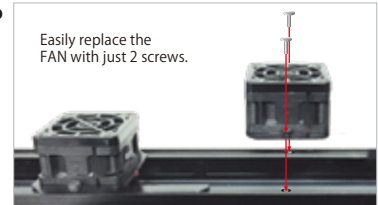
## A Wide Range Of Size Variations Available



## Easy Replacement of FAN Unit!

The FAN unit attached to the illumination is fixed with screws, making it easy to replace during maintenance.

Easily replace the FAN with just 2 screws.



## Error Detection Function To Avoid Trouble In Advance!

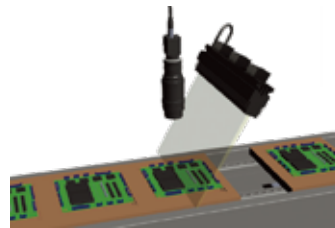
By connecting to the applicable controller IWDV, it is possible to detect

- Temperature abnormalities in the illumination
- Non-connection of the FAN unit

This enables quick troubleshooting through error signals from the controller, avoiding potential issues.

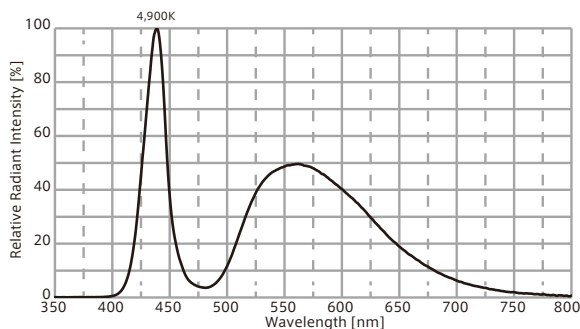


## Object: Electronic Components Mounting Board



Used Illumination: IDBB-LSRF300W

## Optical Spectrum (Ref.Value)



- Line illumination products
- IDBB-LSRF
  - IDBC-LSR
  - IDBB-LSRH
  - IDBB-LSRA
  - IDBB-LSRS
  - IDBC-LSRC
  - IDBB-LSRC
  - IDBC-RE
  - IDBB-RE
  - IDBA-RK
  - IQDH-RE
  - IMAR-D\_8ch
  - IDR-LA-8ch
  - IDRA-T-8ch
  - IMAR-D
  - IMAR-CT D
  - IHR-LE
  - IHRB · IHRA
  - IDR-F
  - IDR-F33/16
  - IDR
  - IDR-LA
  - IDRA-T
  - IFR · IPR
  - IDBA-HM
  - IDBA-HMS
  - IDBA-HMS-IR
  - IDBA-FD
  - IDBA-LEH2
  - IDBA-LEH
  - IDBA-LE
  - IDBA-SE
  - IDBA-SL
  - IDBA
  - IDBA-Q
  - IFLA · IFLB
  - IDHM
  - IHMA
  - IHMA-V
  - IFPA
  - IFD-IR
  - IHMA-40D
  - IFPA-D
  - IPOC
  - IFHA
  - IDDB-KH · IDDA-KH
  - IDUB
  - IDD
  - IDD-CB
  - IQD · IQDH
  - IQDA-CB
  - IFVA · IFVB
  - IFVA-ST
  - IFV
  - IV-14 · IV-30
  - IHV-20 · IHVE-21
  - IHVA-SP · IHSL-SP
  - IBF
  - IHV-FX
  - RBOX
  - IDBB-CH
  - IDHRA
  - UV-CAN
  - Infrared
  - Infrared
  - IMAR-RGB
  - IDDA-KH-RGB
  - RGB Full-color
  - ISU
  - ISS
  - Introduction of Customization
  - High speed synchronous image capture kit products
  - ISC-24
  - Image capture evaluation kit products
  - IDMU
  - ILP
  - ILC
  - ILV
  - ILS
  - IPPA\_G · IRPA\_G
  - IPSA · IPPA
  - IDGC
  - IDPA
  - IDCA
  - IMC
  - IWDV-24
  - IWDV(S)-48
  - ISC
  - IJS
  - IJS-30M2-TP/SS
  - ILS-40M2-PI/SS
  - SAG
  - SLLUB
  - LLUB
  - IFIC
- Ring illumination products
- Bar illumination products
- Transmitted/area illumination products
- Dome illumination products
- Ceiling illumination products
- Special illumination products
- Kit products
- Controller products
- Other illumination products

