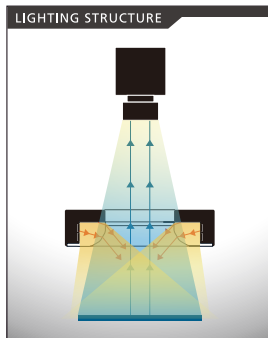
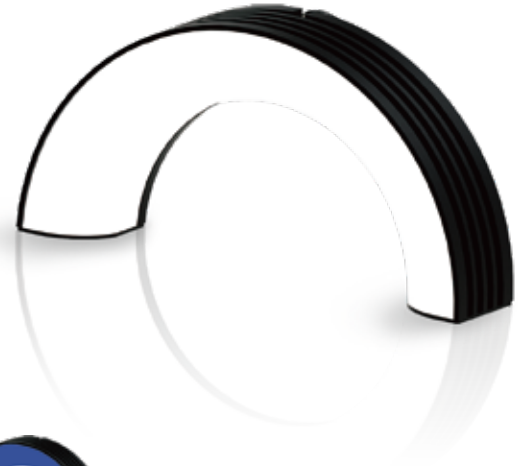


Multi-position Diffuse Irradiate Semicircle Ring Illumination [IMAR-CT D Series]

High-brightness type, even brighter than conventional model
Realized the illumination that matches the object shape and installation environment

24V DC Models Available

- Applications**
- Semiconductor/Electronic components industry etc.
 - ➔ Chip component Dirt/Edge inspection etc.
 - Beverage bottles/Plastic molding industry etc.
 - ➔ Top surface chipping/Perimeter chipping / Engraving inspection.



Standard Size Lineup Standard release in 6 sizes: R27.5/R40/R55/R65/R80/R100mm

Distinctive Functional Features

High-intensity LEDs are densely concentrated

Achieved a uniform and very bright ring illumination. In addition, the use of special diffusion plates makes it possible to avoid reflection of the LED elements and to provide diffuse illumination.

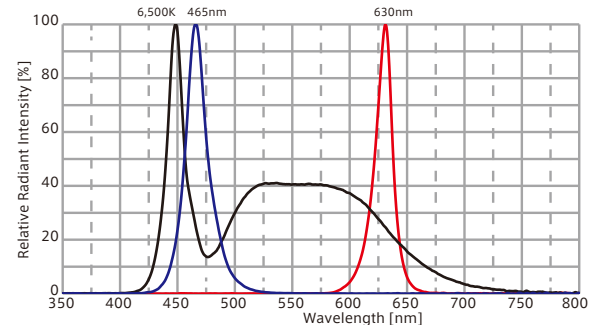


High-performance Heat-dissipating Fins

Original heat dissipation structure, heat dissipation performance is dramatically improved, ensuring high stability and long life.

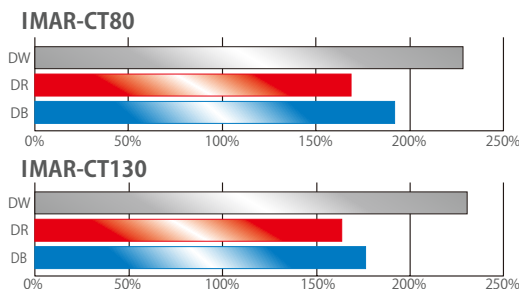


Optical Spectrum (Ref. Value)



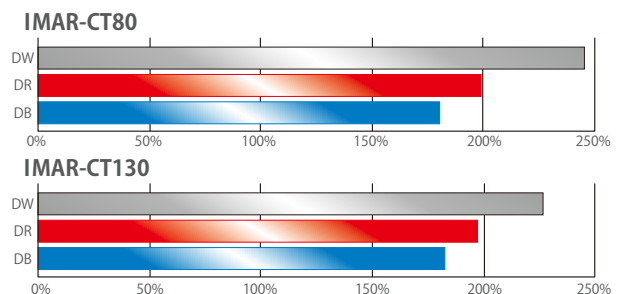
Comparison With Conventional Products (Ref. value).

Illumination with 1.6 to 2.3 times of the brightness compared to conventional products.



Comparison Of Illumination Intensity During Overdrive (Ref. value).

By overdriving, it is possible to obtain 1.8 to 2.4 times the illumination intensity compared to steady-state illumination.



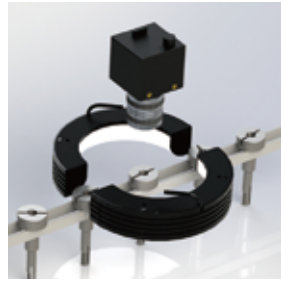
- IDBB-LSRF
- IDBC-LSR
- IDBB-LSRH
- IDBB-LSRA
- IDBB-LSRS
- IDBC-LSRC
- IDBB-LSRC
- IDBC-RE
- IDBB-RE
- IDBA-RK
- IQDH-RE
- IMAR-D_8ch
- IDR-LA-8ch
- IDRA-T-8ch
- IMAR-D
- IMAR-CT D
- IHR-LE
- IHRB · IHRA
- IDR-F
- IDR-F33/16
- IDR
- IDR-LA
- IDRA-T
- IFR · IPR
- IDBA-HM
- IDBA-HMS
- IDBA-HMS-IR
- IDBA-FD
- IDBA-LEH2
- IDBA-LEH
- IDBA-LE
- IDBA-SE
- IDBA-SL
- IDBA
- IDBA-Q
- IFLA · IFLB
- IDHM
- IHMA
- IHMA-V
- IFPA
- IFD-IR
- IHMA-40D
- IFPA-D
- IPOC
- IFHA
- IDDB-KH · IDDA-KH
- IDUB
- IDD
- IDD-CB
- IQD · IQDH
- IQDA-CB
- IFVA · IFVB
- IFVA-ST
- IFV
- IV-14 · IV-30
- IHV-20 · IHVE-21
- IHVA-SP · IHSL-SP
- IBF
- IHV-FX
- RBOX
- IDBB-CH
- IDHRA
- UV-CAN
- Infrared
- Infrared
- IMAR-RGB
- IDDA-KH-RGB
- RGB Full-color
- ISU
- ISS
- Introduction of Customization
- High-speed synchronous image capture kit products
- ISC-24
- Image capture evaluation kit products
- IDMU
- ILP
- ILC
- ILV
- ILS
- IPPA_G · IRPA_G
- IPSA · IPPA
- IDGC
- IDPA
- IDCA
- IMC
- IWDV-24
- IWDV(S)-48
- ISC
- IJS
- IJS-30M2-TP/SS
- ILS-40M2-PI/SS
- SAG
- SLLUB
- LLUB
- IFIC

Examples Of Usage Scenarios



Printing recognition on conveying objects

Suitable for recognizing printed bar codes and such on the curved surface of cylindrical bottles, etc.



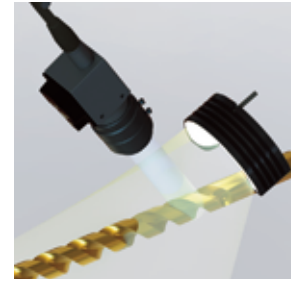
Inspection for conveying objects

Suitable for inspections at closer ranges to the object without the lighting interfering with the conveyor



Shape recognition of bottle mouth, cap, etc.

Suitable for recognizing shapes with spiral processing



Inspection for cylindrical objects

Suitable for surface defects and shape recognition of wear and deformations on cylindrical objects

Model	Color	Power Consumption(W)	Input Voltage	SAG (※)	Applicable Controller	Drawing	
IMAR-CT55D □	R	2.8	DC12V	B6	IDMU Series (P.193) ILP-30M2 (P.197) IDGC Series (P.209) Strobe/Overdrive controllers, etc.	1	
	W	3.3		A3			
	B	3.3		8C			
IMAR-CT80D □	R	6		8E			2
	W	6.6		8C			
	B	6.6		78			
IMAR-CT110D □	R	8		92		3	
	W	9.3		88			
	B	9.3		7A			
IMAR-CT130D □	R	10		8E			4
	W	11.5		87			
	B	11.5		7B			
IMAR-CT160D □	R	12.5		91		5	
	W	14		8D			
	B	14		7A			
IMAR-CT200D □	R	16		99			6
	W	17.5		96			
	B	17.5		82			

★The emission color (W=White,R=Red,B=Blue) is indicated by □ in the model table.

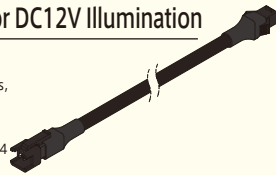
★DC24V products are also available. Please feel free to contact us for more information.

※SAG: The maximum instantaneous upper limit output voltage setting value in the controller for the corresponding illumination when used in combination with the Overdrive controller.

Singal Type Extension Cable For DC12V Illumination

I-CB-S series

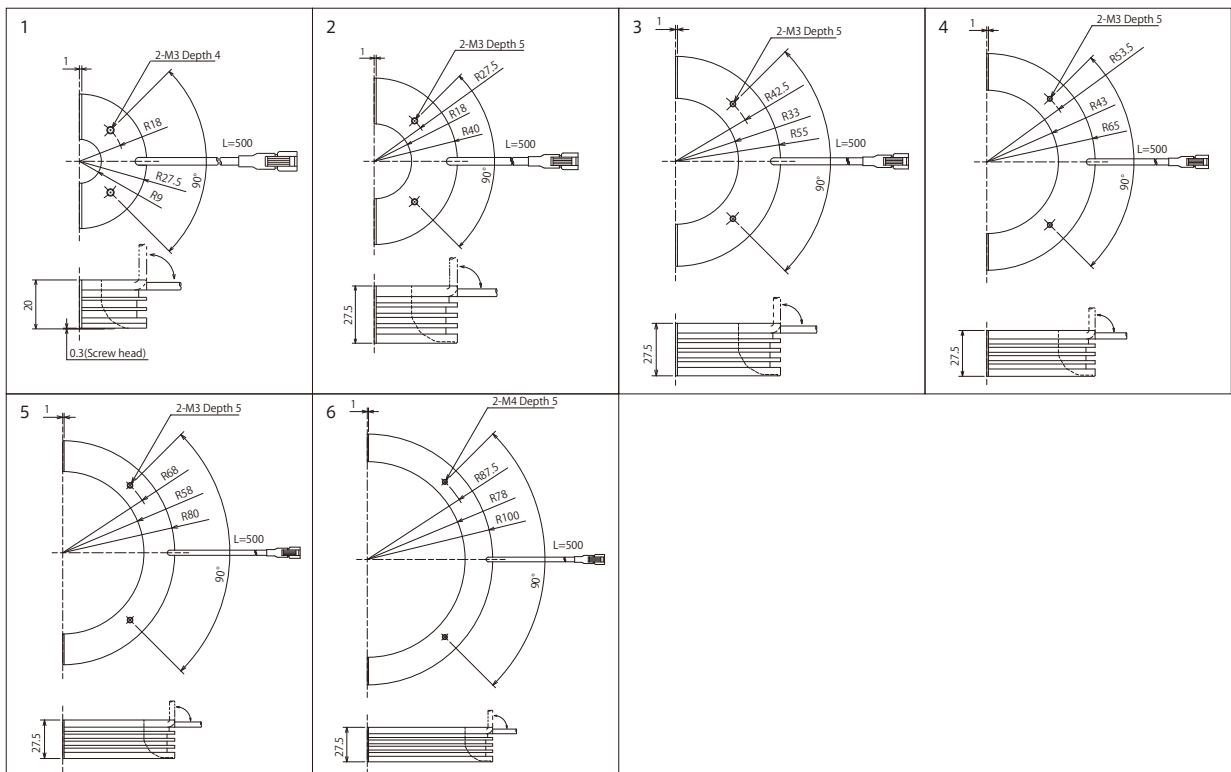
When used for moving parts such as robots, please use the I-CB-S_R-C02 series, which manufactured with robust robot cable with high flexibility. For DC24V model, please use the I-CB-S_-24 series or I-CB-S_R-24-C02 series.



Recommended Digital Controller(PWM Control)

IDMU series

Output control: 1,000 Levels
Compact PWM controller with DC24V input voltage, ideal for installation inside panels
Expandable up to 40 channels by linking units
Equipped with programming and camera trigger output functions, making it versatile.



- Line illumination products
 - IDBB-LSRF
 - IDBC-LSR
 - IDBB-LSRH
 - IDBB-LSRA
 - IDBB-LSRS
 - IDBC-LSRC
 - IDBB-LSRC
 - IDBC-RE
 - IDBB-RE
 - IDBA-RK
 - IQDH-RE
- Ring illumination products
 - IMAR-D_8ch
 - IDR-LA-8ch
 - IDRA-T-8ch
 - IMAR-D
 - IMAR-CT D
 - IHR-LE
 - IHRB · IHRA
 - IDR-F
 - IDR-F33/16
 - IDR
 - IDR-LA
 - IDRA-T
 - IFR · IPR
 - IDBA-HM
- Bar illumination products
 - IDBA-HMS
 - IDBA-HMS-IR
 - IDBA-FD
 - IDBA-LEH2
 - IDBA-LEH
 - IDBA-LE
 - IDBA-SE
 - IDBA-SL
 - IDBA
 - IDBA-Q
 - IFLA · IFLB
- Dome illumination products
 - IDHM
 - IHMA
 - IHMA-V
 - IFPA
 - IFD
 - IFD-IR
 - IHMA-40D
 - IFPA-D
 - IPQC
 - IFHA
 - IDDB-KH · IDDA-KH
 - IDUB
 - IDD
 - IDD-CB
 - IQD · IQDH
 - IQDA-CB
 - IFVA · IFVB
 - IFVA-ST
 - IFV
 - IV-14 · IV-30
 - IHV-20 · IHVE-21
 - IHVA-SP · IHSL-SP
- Special illumination products
 - IBF
 - IHV-FX
 - RBOX
 - IDBB-CH
 - IDHRA
 - UV-CAN
 - Infrared
 - Infrared
 - IMAR-RGB
 - IDDA-KH-RGB
 - RGB Full-color
 - ISU
 - ISS
- Introduction of Customization
 - High speed synchronous imaging camera kit products
 - ISC-24
 - Image capture evaluation kit products
- Controller products
 - IDMU
 - ILP
 - ILC
 - ILV
 - ILS
 - IPPA_G · IRPA_G
 - IPSA · IPPA
 - IDGC
 - IDPA
 - IDCA
 - IMC
 - IWDV-24
 - IWDV(S)-48
 - ISC
 - IJS
 - IUS-30M2-TP/SS
 - ILS-40M2-PI/SS
- Other illumination products
 - SAG
 - SLUB
 - LLUB
 - IFIC