

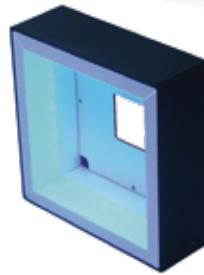
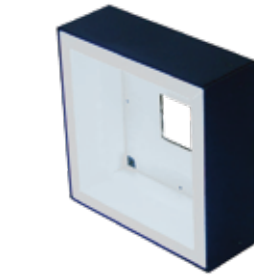
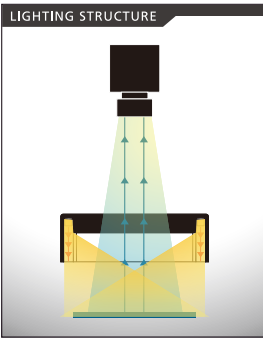
Square Low-angle/Diffuse Irradiate Dome Illumination [IPQC Series]

High-intensity, uniformly oblique indirect irradiate dome illumination

24V DC Models Available

Power LEDs

- Applications**
- Semiconductor/Electronic components industry etc.
 - ➔ Inspection of top surface chipping etc.
 - Can /Aluminum manufacturing industry etc.
 - ➔ Inspection of characters on the bottom etc.
 - Glass products/Bottle manufacturing industry etc.
 - ➔ Inspection of glass bottle cap and openings etc.
 - Beverage bottles/Plastic molding industry etc.
 - ➔ Side inspection of the cap etc.
 - Connector manufacturing industry etc.
 - ➔ Inspection of bent/ missing or dirty pins · leads.



Standard Size Lineup

Standard release in 5 sizes: □35/□51/□78/□99/□123mm

Imaging Example

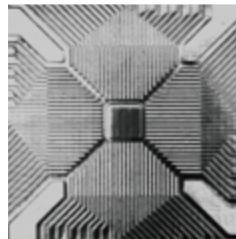
Achieved to obtain images unaffected by glare using uniform oblique illumination



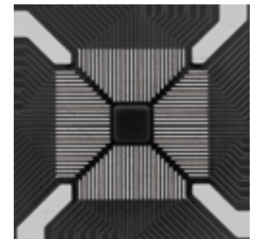
Ring Illumination



IPQC-78W

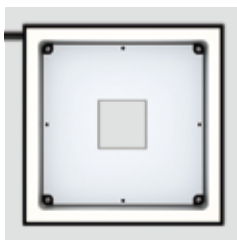


Ring Illumination

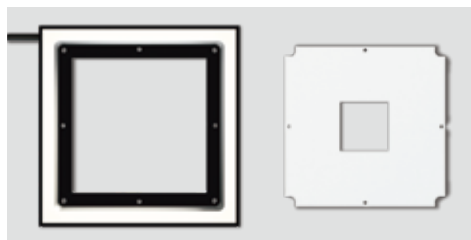


IPQC-99W

Transition From Dome Illumination To Shadowless Oblique Lighting.



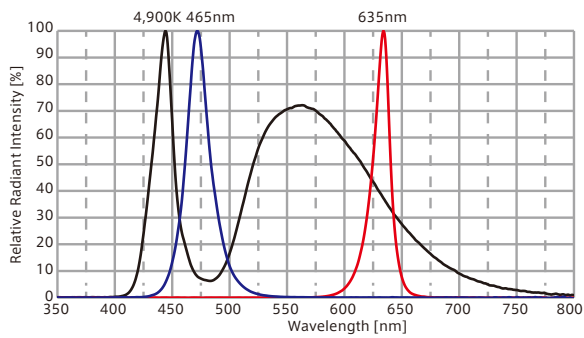
Standard model



By removing the reflector, it is possible to switch to shadowless oblique lighting

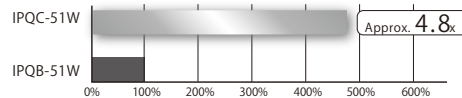
- Line illumination products
- IDBB-LSRF
 - IDBC-LSR
 - IDBB-LSRH
 - IDBB-LSRA
 - IDBB-LSRS
 - IDBC-LSRC
 - IDBB-LSRC
 - IDBC-RE
 - IDBB-RE
 - IDBA-RK
 - IQDH-RE
 - IMAR-D_8ch
 - IDR-LA-8ch
 - IDRA-T-8ch
 - IMAR-D
 - IMAR-CT D
 - IHR-LE
 - IHRB · IHRA
 - IDR-F
 - IDR-F33/16
 - IDR
 - IDR-LA
 - IDRA-T
 - IFR · IPR
 - IDBA-HM
 - IDBA-HMS
 - IDBA-HMS-IR
 - IDBA-FD
 - IDBA-LEH2
 - IDBA-LEH
 - IDBA-LE
 - IDBA-SE
 - IDBA-SL
 - IDBA
 - IDBA-Q
 - IFLA · IFLB
 - IDHM
 - IHMA
 - IHMA-V
 - IFPA
 - IFD
 - IFD-IR
 - IHMA-40D
 - IFPA-D
 - IPQC
 - IFHA
 - IDDB-KH · IDDA-KH
 - IDUB
 - IDD
 - IDD-CB
 - IQD · IQDH
 - IQDA-CB
 - IFVA · IFVB
 - IFVA-ST
 - IFV
 - IV-14 · IV-30
 - IHV-20 · IHVE-21
 - IHVA-SP · IHSL-SP
 - IBF
 - IHV-FX
 - RBOX
 - IDBB-CH
 - IDHRA
 - UV-CAN
 - Infrared
 - Infrared
 - IMAR-RGB
 - IDDA-KH-RGB
 - RGB Full-color
 - ISU
 - ISS
- Ring illumination products
- Bar illumination products
- Transmitted/area illumination products
- Dome illumination products
- Special illumination products
- Introduction of Customization
- High-speed synchronous image capture kit products
- KIT products
- Image capture evaluation kit products
- Controller products
- Other illumination products

Optical Spectrum (Ref.Value)

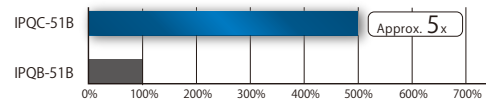


Comparison With Conventional Products (Ref.value).

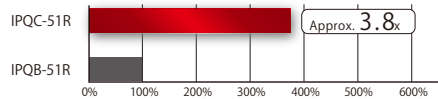
White Color (WD=10mm)



Blue Color (WD=10mm)



Red Color (WD=10mm)



Model	Color	Power Consumption(W)	Input Voltage	SAG (※)	Applicable Controller	Drawing
IPQC-35□	R	4.2	DC12V	FF	IDMU Series (P.193) ILP-30M2 (P.197) IDGC Series (P.209) and the others Strobe/Overdrive Controllers, etc.	1
	W B	4.7				
IPQC-51□	R	6.5		FF		2
	W B	6.8				
IPQC-78□	R	11.5		FF		3
	W B	12.5				
IPQC-99□	R	16.5		FA		4
	W	19				
	B	18				
IPQC-123□	R	21		FF		5
	W	24				
	B	22.5				

★The emission color (W=White,R=Red,B=Blue) is indicated by □ in the model table.

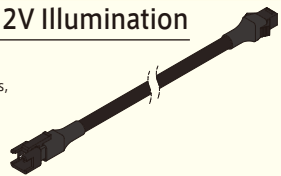
★DC24V products are also available. Please feel free to contact us for more information.

※SAG: The maximum instantaneous upper limit output voltage setting value in the controller for the corresponding illumination when used in combination with the Overdrive controller.

Extension Cable For DC12V Illumination

I-CB-S Series

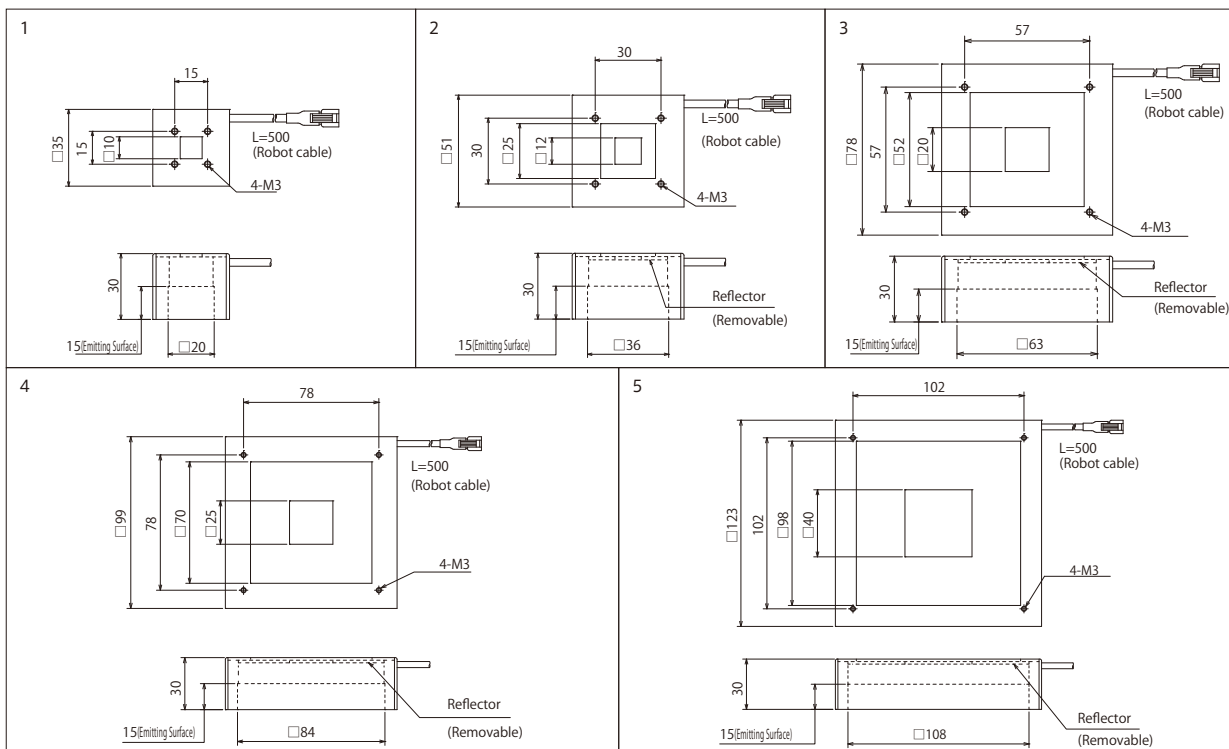
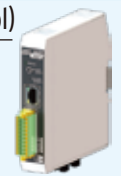
When used for moving parts such as robots, please use the I-CB-S_R-C02 series, which manufactured with robust robot cable with high flexibility. I-CB-S_24 series and I-CB-S_R-24-C02 series are compatible for DC24V model.



Recommended Digital Controller(PWM Control)

IDMU Series

Output control: 1,000 Levels
Compact PWM controller with DC24V input voltage, ideal for installation inside panels
Expandable up to 40 channels by linking units
Equipped with programming and camera trigger output functions, making it versatile.



- Line illumination products
 - IDBB-LSRF
 - IDBC-LSR
 - IDBB-LSRH
 - IDBB-LSRA
 - IDBB-LSRS
 - IDBC-LSRC
 - IDBB-LSRC
 - IDBB-RE
 - IDBB-RE
 - IDBA-RK
 - IQDH-RE
 - IMAR-D_8ch
 - IDR-LA-8ch
 - IDRA-T-8ch
- Ring illumination products
 - IMAR-D
 - IMAR-CT D
 - IHR-LE
 - IHRB · IHRA
 - IDR-F
 - IDR-F33/16
 - IDR
 - IDR-LA
 - IDRA-T
 - IFR · IPR
 - IDBA-HM
- Bar illumination products
 - IDBA-HMS
 - IDBA-HMS-IR
 - IDBA-FD
 - IDBA-LEH2
 - IDBA-LEH
 - IDBA-LE
 - IDBA-SE
 - IDBA-SL
 - IDBA
 - IDBA-Q
 - IFLA · IFLB
 - IDHM
 - IHMA
 - IHMA-V
 - IFPA
 - IFD
 - IFD-IR
 - IFPA-D
 - IPQC
 - IFHA
 - IDDB-KH · IDDA-KH
 - IDUB
 - IDD
 - IDD-CB
 - IQD · IQDH
 - IQDA-CB
 - IFVA · IFVB
 - IFVA-ST
 - IFV
 - IV-14 · IV-30
 - IHV-20 · IHVE-21
 - IHVA-SP · IHSL-SP
 - IBF
 - IHV-FX
 - RBOX
 - IDBB-CH
 - IDHRA
 - UV-CAN
 - Infrared
 - Infrared
 - IMAR-RGB
 - IDDA-KH-RGB
 - RGB Full-color
 - ISU
 - ISS
- Special illumination products
 - Introduction of Customization
 - High-speed synchronous imaging camera products
 - ISC-24
 - Image capture evaluation kit products
- Other products
 - IDMU
 - ILP
 - ILC
 - ILV
 - ILS
 - IPPA_G · IRPA_G
 - IPSA · IPPA
 - IDGC
 - IDPA
 - IDCA
 - IMC
 - IWDV-24
 - IWDV(S)-48
 - ISC
 - IJS
 - IUS-30M2-TP/SS
 - ILS-40M2-PI/SS
 - SAG
 - SLLUB
 - LLUB
 - IFIC