

NEW

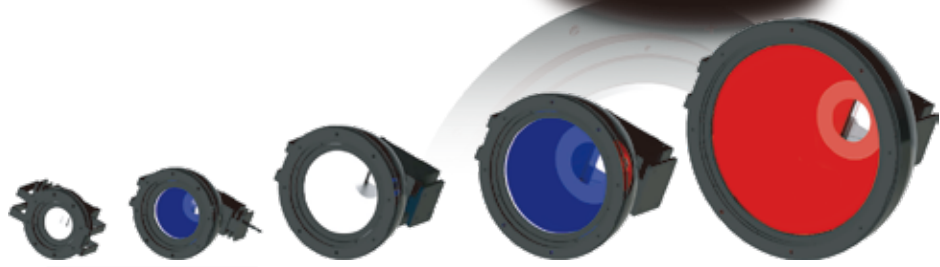
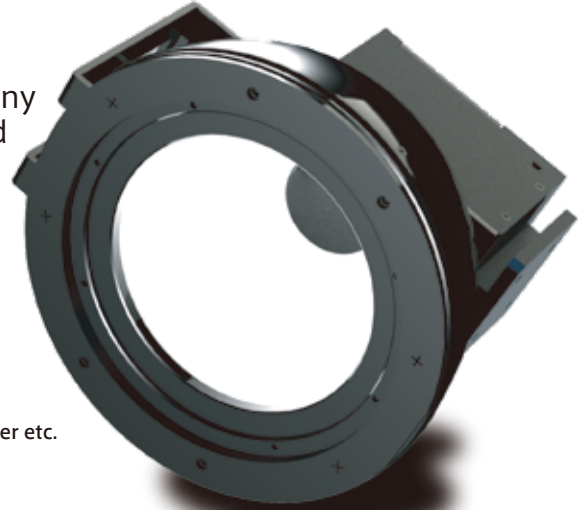
Pseudo-coaxial Dome Illumination [IDUB Series]

Uniform illumination of 3D objects without any shadowing, freely switch between dome and coaxial lighting

24V DC Models Available

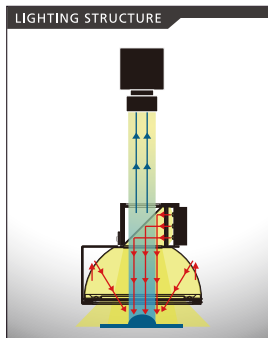
Power LEDs

- Applications**
- Can /Aluminum manufacturing industry etc.
 - ➔ Inspection of characters on the bottem etc.
 - Semiconductor/Electronic components industry etc.
 - ➔ Inspection of mounted circuit boards etc.
 - Food/Pharmaceutical/Packaging industry etc.
 - ➔ Inspection of tablet chipping /sheet tearing /character etc.



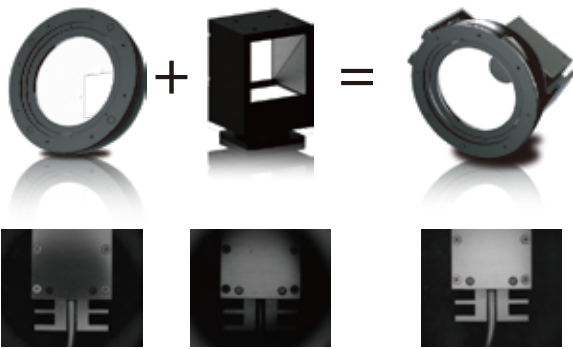
Standard Size Lineup

Standard release in 5 sizes: $\phi 60 / \phi 80 / \phi 120 / \phi 150 / \phi 220\text{mm}$



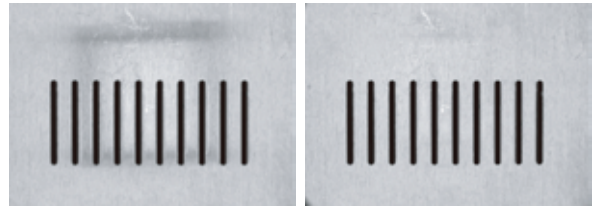
Achieve Uniform Illumination Without Light Leakage By The Dome And Coaxial Configuration.

Achived More Uneven Illumination Reduction With A Reflector Attachd bBy Standard



Equipped with a reflector (Removable)

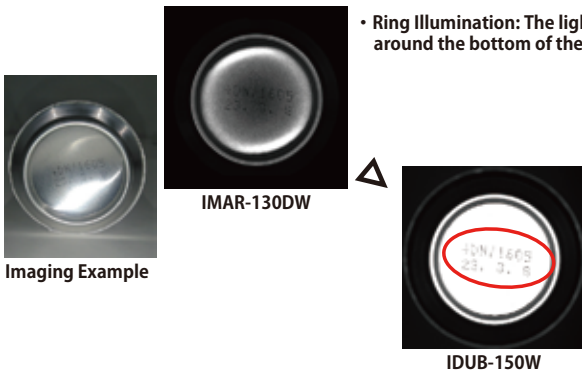
Reflector



Without reflector (Conventional model)

With reflector

Without Reflector



Imaging Example

IMAR-130DW

IDUB-150W

• Ring Illumination: The light only reflects around the bottom of the can.



Glossy black resin (cracked)



IFHA-150G

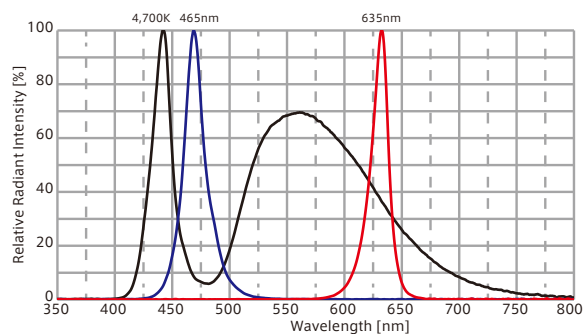
• Square Dome : Difficult to get a high contrast image



IDUB-150W

- Line illumination products
- IDBB-LSRF
 - IDBC-LSR
 - IDBB-LSRH
 - IDBB-LSRA
 - IDBB-LSRS
 - IDBC-LSRC
 - IDBB-LSRC
 - IDBC-RE
 - IDBB-RE
 - IDBA-RK
 - IQDH-RE
 - IMAR-D_8ch
 - IDR-LA-8ch
 - IDRA-T-8ch
 - IMAR-D
 - IMAR-CT D
 - IHR-LE
 - IHRB · IHRA
 - IDR-F
 - IDR-F33/16
 - IDR
 - IDR-LA
 - IDRA-T
 - IFR · IPR
 - IDBA-HM
 - IDBA-HMS
 - IDBA-HMS-IR
 - IDBA-FD
 - IDBA-LEH2
 - IDBA-LEH
 - IDBA-LE
 - IDBA-SE
 - IDBA-SL
 - IDBA
 - IDBA-Q
 - IFLA · IFLB
 - IDHM
 - IHMA
 - IHMA-V
 - IFPA
 - IFD-IR
 - IHMA-40D
 - IFPA-D
 - IPOC
 - IFHA
 - IDDB-KH · IDDA-KH
 - IDUB
 - IDD
 - IDD-CB
 - IQD · IQDH
 - IQDA-CB
 - IFVA · IFVB
 - IFVA-ST
 - IFV
 - IV-14 · IV-30
 - IHV-20 · IHVE-21
 - IHVA-SP · IHSL-SP
 - IBF
 - IHV-FX
 - RBOX
 - IDBB-CH
 - IDHRA
 - UV-CAN
 - Infrared
 - Infrared
 - IMAR-RGB
 - IDDA-KH-RGB
 - RGB Full-color
 - ISU
 - ISS
- Special illumination products
- Introduction of Customization
 - High speed and high resolution color IC products
 - ISC-24
 - Image capture evaluation kit products
 - IDMU
 - ILP
 - ILC
 - ILV
 - ILS
 - IPPA_G · IRPA_G
 - IPSA · IPPA
 - IDGC
 - IDPA
 - IDCA
 - IMC
 - IWDV-24
 - IWDV(S)-48
 - ISC
 - IJS
 - IJS-30M2-TP/SS
 - ILS-40M2-PI/SS
 - SAG
 - SLLUB
 - LLUB
 - IFIC
- Other illumination products

Optical Spectrum (Ref.Value)



Model	Color	Power Consumption(W)		Input Voltage	SAG(※)		Applicable Controller	Drawing	
		(Dome / Coaxial)			Dome	Coaxial			
IDUB-60□	R W B	10.7	6.5/4.2	DC12V	FF	FF(R/W/B)	IDMU Series (P.193) ILP-30M2 (P.197) IDGC Series (P.209) and the others Strobe/Overdrive Controllers, etc.	1	
IDUB-80□	R W B	13.2	9/4.2		FF	FF(R/W/B)			2
IDUB-120□	R W B	24	13.5/10.5		FF	AA(R)/98(W/B)			3
IDUB-150□	R W B	32	18/14		FF	B9(R)/A7(W/B)			4
IDUB-220□	R W B	42.5	28.5/14		FF(R)/C3(W) /BC(B)	B9(R)/A7(W/B)			5

★The emission color (W=White,R=Red,B=Blue) is indicated by □ in the model table.

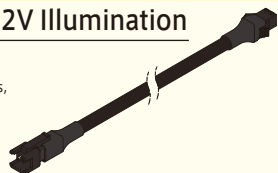
★DC24V products are also available. Please feel free to contact us for more information.

※SAG: The maximum instantaneous upper limit output voltage setting value in the controller for the corresponding illumination when used in combination with the Overdrive controller.

Extension Cable For DC12V Illumination

I-CB-S Series

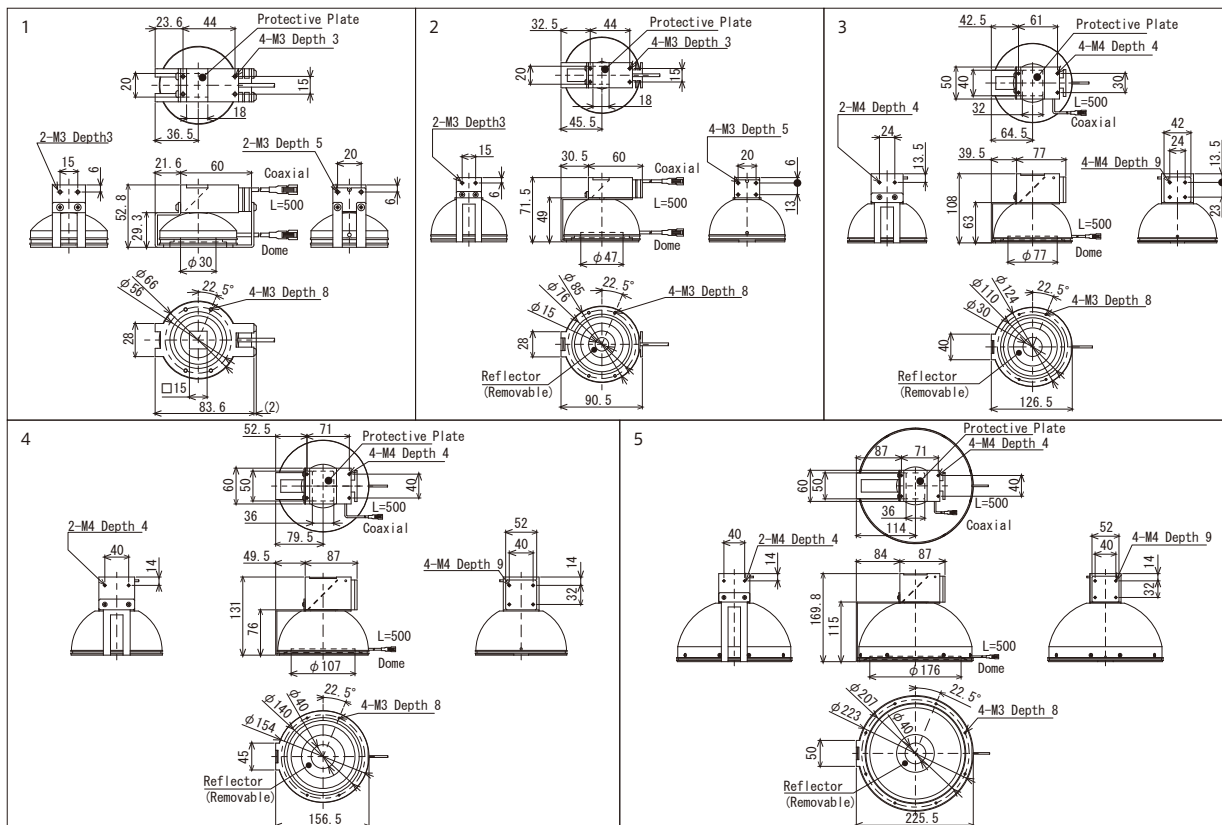
When used for moving parts such as robots, please use the I-CB-S_R-C02 series, which manufactured with robust robot cable with high flexibility. I-CB-S_R-24 series and I-CB-S_R-24-C02 series are compatible for DC24V model.



Recommended Digital Controller(PWM Control)

IDMU Series

Output control: 1,000 Levels
Compact PWM controller with DC24V input voltage, ideal for installation inside panels
Expandable up to 40 channels by linking units
Equipped with programming and camera trigger output functions, making it versatile.



- Line illumination products
 - IDBB-LSRF
 - IDBB-LSR
 - IDBB-LSRH
 - IDBB-LSRA
 - IDBB-LSRS
 - IDBB-LSRC
 - IDBB-RE
 - IDBB-RE
 - IDBA-RK
 - IQDH-RE
 - IMAR-D_8ch
 - IDR-LA-8ch
 - IDRA-T-8ch
- Ring illumination products
 - IMAR-D
 - IMAR-CT D
 - IHR-LE
 - IHRB · IHRA
 - IDR-F
 - IDR-F33/16
 - IDR
 - IDR-LA
 - IDRA-T
 - IFR · IPR
- Bar illumination products
 - IDBA-HM
 - IDBA-HMS
 - IDBA-HMS-IR
 - IDBA-FD
 - IDBA-LEH2
 - IDBA-LEH
 - IDBA-LE
 - IDBA-SE
 - IDBA-SL
 - IDBA
 - IDBA-Q
 - IFLA · IFLB
 - IDHM
 - IHMA
 - IHMA-V
 - IFPA
 - IFD
 - IFD-IR
 - IHMA-40D
 - IFPA-D
- Dome illumination products
 - IPQC
 - IFHA
 - IDDB-KH · IDDA-KH
 - IDUB
 - IDD
 - IDD-CB
 - IQD · IQDH
 - IQDA-CB
 - IFVA · IFVB
 - IFVA-ST
 - IFV
 - IV-14 · IV-30
 - IHV-20 · IHVE-21
 - IHVA-SP · IHSL-SP
 - IBF
- Special illumination products
 - IHV-FX
 - RBOX
 - IDBB-CH
 - IDHRA
 - UV-CAN
 - Infrared
 - Infrared
 - IMAR-RGB
 - IDDA-KH-RGB
 - RGB Full-color
 - ISU
 - ISS
- Introduction of Customization
 - High-speed synchronous imaging camera products
- Kit products
 - ISC-24
 - Image capture evaluation kit products
 - IDMU
 - ILP
 - ILC
 - ILV
 - ILS
- Controller products
 - IPPA_G · IRPA_G
 - IPSA · IPPA
 - IDGC
 - IDPA
 - IDCA
 - IMC
 - IWDV-24
 - IWDV(S)-48
 - ISC
 - IJS
 - ILS-30M2-TP/SS
 - ILS-40M2-PI/SS
- Other illumination products
 - SAG
 - SLUB
 - LLUB
 - IFC