

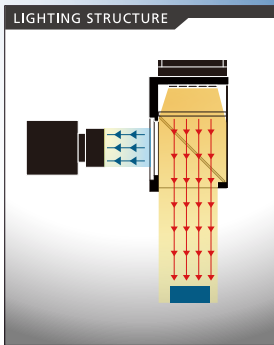
NEW

Straight Incident Pseudo-Coaxial Illumination [IFVA-ST Series]

Achieving space saving & image clarity improving!
By directly irradiating light and capturing images from the side with a camera, it achieves the effects mentioned above

Design Registered

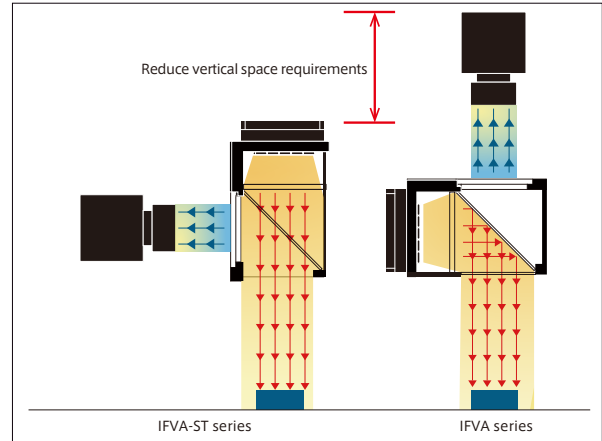
- Applications**
- Semiconductor/Electronic components industry etc.
 - ➔ Pattern inspection of PCBs & Marking inspection of wafers
 - Food/Pharmaceutical/Packaging industry etc.
 - ➔ Inspection of engraving on glossy surfaces/ Surface cratch etc.



Standard Size Lineup Standard release in □40 / □50 / □70mm 3 sizes

Ideal for Space-Saving

- When constructing an imaging environment where the subject is directly viewed according to the camera's field of view, creating distance between the camera and the subject requires a wide space in one direction.
- The IFVA-ST series allows the camera's imaging direction to be changed by reflecting the imaging subject on the internal half-mirror.
- By changing the imaging direction, it becomes possible to reduce the space required in the vertical direction, achieving space-saving.
- Improved light intensity and parallelism compared to the previous model (IFV-C**C01)!



Illumination Imaging

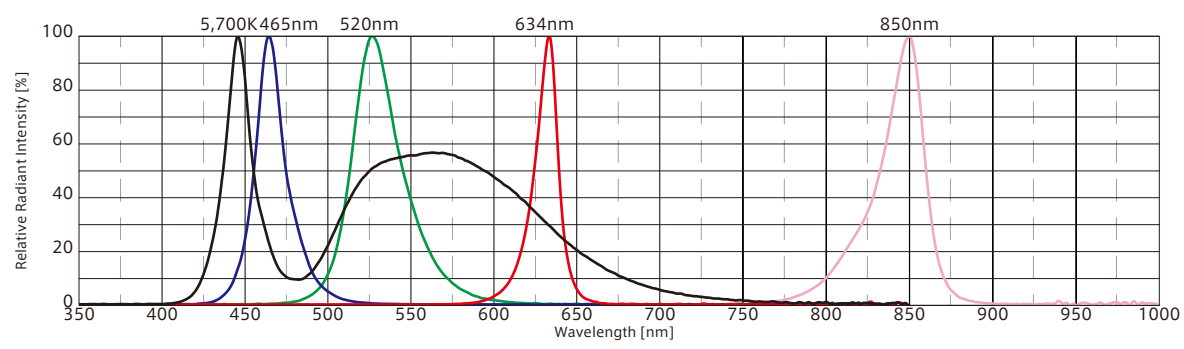


IFVA-ST series

- Line illumination products
- IDBB-LSRF
 - IDBC-LSR
 - IDBB-LSRH
 - IDBB-LSRA
 - IDBB-LSRS
 - IDBC-LSRC
 - IDBB-LSRC
 - IDBC-RE
 - IDBB-RE
 - IDBA-RK
 - IQDH-RE
 - IMAR-D_8ch
 - IDR-LA-8ch
 - IDRA-T-8ch
 - IMAR-D
 - IMAR-CT D
 - IHR-LE
 - IHRB · IHRA
 - IDR-F
 - IDR-F33/16
 - IDR
 - IDR-LA
 - IDRA-T
 - IFR · IPR
 - IDBA-HM
 - IDBA-HMS
 - IDBA-HMS-IR
 - IDBA-FD
 - IDBA-LEH2
 - IDBA-LEH
 - IDBA-LE
 - IDBA-SE
 - IDBA-SL
 - IDBA
 - IDBA-Q
 - IFLA · IFLB
 - IDHM
 - IHMA
 - IHMA-V
 - IFPA
 - IFD-IR
 - IHMA-40D
 - IFPA-D
 - IPOC
 - IFHA
 - IDDB-KH · IDDA-KH
 - IDUB
 - IDD
 - IDD-CB
 - IQD · IQDH
 - IQDA-CB
 - IFVA · IFVB
 - IFVA-ST
 - IFV
 - IV-14 · IV-30
 - IHV-20 · IHVE-21
- Ring illumination products
- Bar illumination products
- Transmitted/area illumination products
- Dome illumination products
- Coaxial illumination products
- Special illumination products
- Controller products
- Other illumination products
- Introduction of Customization
- High-speed synchronous image capture kit products
- ISC-24
- Image capture evaluation kit products
- IDMU
- ILP
- ILC
- ILV
- ILS
- IPPA_G · IRPA_G
- IPSA · IPPA
- IDGC
- IDPA
- IDCA
- IMC
- IWDV-24
- IWDV(S)-48
- ISC
- IJS
- IJS-30M2-TP/SS
- ILS-40M2-PI/SS
- SAG
- SLLUB
- LLUB
- IFIC

- Line illumination products
 - IDBB-LSRF
 - IDBC-LSR
 - IDBB-LSRH
 - IDBB-LSRA
 - IDBB-LSRS
 - IDBC-LSRC
 - IDBB-LSRC
 - IDBC-RE
 - IDBB-RE
 - IDBA-RK
 - IQDH-RE
 - IMAR-D_-8ch
 - IDR-LA-8ch
 - IDRA-T-8ch
 - IMAR-D
 - IMAR-CT D
 - IHR-LE
 - IHRB · IHRA
 - IDR-F
 - IDR-F33/16
 - IDR
 - IDR-LA
 - IDRA-T
- Ring illumination products
 - IFR · IPR
 - IDBA-HM
- Bar illumination products
 - IDBA-HMS
 - IDBA-HMS-IR
 - IDBA-FD
 - IDBA-LEH2
 - IDBA-LEH
 - IDBA-LE
 - IDBA-SE
 - IDBA-SL
 - IDBA
 - IDBA-Q
 - IFLA · IFLB
 - IDHM
 - IHMA
 - IHMA-V
 - IFPA
 - IFD
 - IFD-IR
 - IHMA-40D
 - IFPA-D
 - IPQC
 - IFHA
- Dome illumination products
 - IDDB-KH · IDDA-KH
 - IDUB
 - IDD
 - IDD-CB
 - IQD · IQDH
 - IQDA-CB
 - IFVA · IFVB
 - IFVA-ST
 - IFV
 - IV-14 · IV-30
 - IHV-20 · IHVE-21
 - IHVA-SP · IHSL-SP
 - IBF
- Special illumination products
 - IHV-FX
 - RBOX
 - IDBB-CH
 - IDHRA
 - UV-CAN
 - Infrared
 - IMAR-RGB
 - IDDA-KH-RGB
 - RGB Full-color
 - ISU
 - ISS
- For products
 - Introduction of Customization
 - High-speed synchronous imaging series kit products
 - ISC-24
 - Image capture evaluation kit products
 - IDMU
 - ILP
 - ILC
 - ILV
 - ILS
- Controller products
 - IPPA_G · IRPA_G
 - IPSA · IPPA
 - IDGC
 - IDPA
 - IDCA
 - IMC
 - IWDV-24
 - IWDV(S)-48
 - ISC
 - IJS
 - IUS-30M2-TP/SS
 - ILS-40M2-PI/SS
 - SAG
 - SLLUB
 - LLUB
 - IFIC

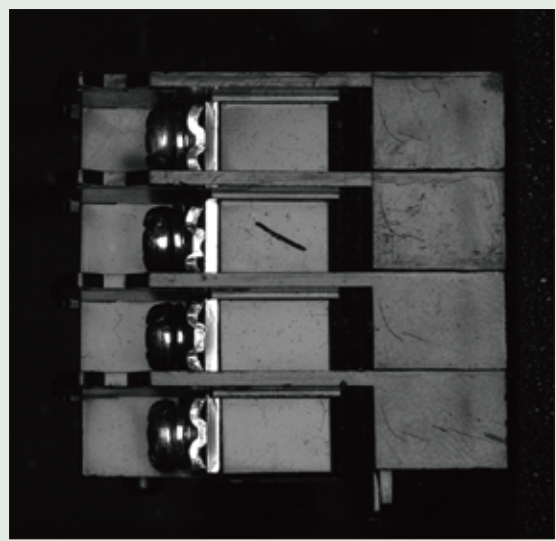
Optical Spectrum (Ref.Value)



Imaging Example



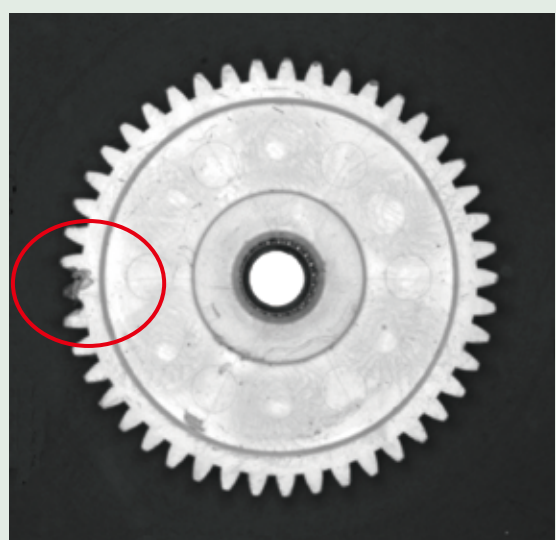
Object:Terminal block



IFVA-50W-ST



Object:Gear



IFVA-50W-ST

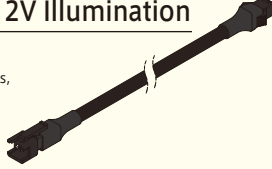
Model	Color	Power Consumption(W)	Input Voltage	SAG(※)	Applicable Controller	Drawing
IFVA-40□-ST	R	10.5	DC12V	AA	IDMU Series (P.193) ILP-30M2 (P.197) IDGC Series (P.209) and the others Strobe/Overdrive Controllers, etc.	1
	W	10.5		98		
	B	10.5		98		
	G	9		8F		
	IR(850)	7		FF		
IFVA-50□-ST	R	14		B9		2
	W	14		A7		
	B	14		A7		
	G	12		A0		
	IR(850)	11		FF		
IFVA-70□-ST	R	24		D9		3
	W	24		B9		
	B	24		B9		
	G	18		C2		
	IR(850)	17		FF		

★The emission color (W=White,R=Red,B=Blue,G=Green,IR-850=IR) is indicated by □ in the model table.
 ★DC24V products are also available. Please feel free to contact us for more information.
 ※SAG: The maximum instantaneous upper limit output voltage setting value in the controller for the corresponding illumination when used in combination with the Overdrive controller.

Extension Cable For DC12V Illumination

I-CB-S Series


When used for moving parts such as robots, please use the I-CB-S_R-C02 series, which manufactured with robust robot cable with high flexibility. I-CB-S_-24 series and I-CB-S_R-24-C02 series are compatible for DC24V model.



Recommended Digital Controller(PWM Control)

IDMU Series

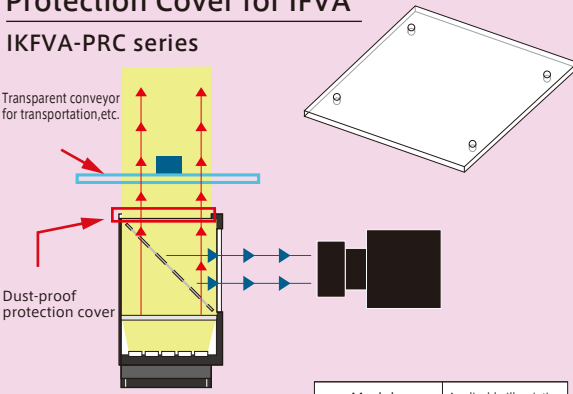
Output control: 1,000 Levels
 Compact PWM controller with DC24V input voltage, ideal for installation inside panels
 Expandable up to 40 channels by linking units
 Equipped with programming and camera trigger output functions, making it versatile.



Protection Cover for IFVA

IKFVA-PRC series

Transparent conveyor for transportation, etc.



Dust-proof protection cover

Model	Applicable Illumination
IKFVA-40ST-PRC	IFVA-40□-ST
IKFVA-50ST-PRC	IFVA-50□-ST
IKFVA-70ST-PRC	IFVA-70□-ST

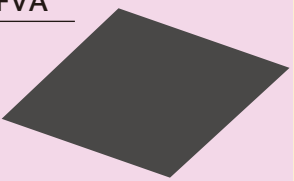
It is a transparent cover designed to protect the illumination side aperture of the IFVA. It is used as a dust prevention and object protection measure when the illumination is located at the bottom during bottom surface inspection, etc.

Polarizing Plate for IFVA

IKFVA-PL series

Model	Applicable Illumination
IKFVA-40-PL	IFVA-40□-ST
IKFVA-50-PL	IFVA-50□-ST
IKFVA-70-PL	IFVA-70□-ST

IKFVA-PL is a built-in type polarizing plate for the IFVA. By attaching a PL filter to the camera lens side as well, it is possible to eliminate workpiece glare and surface reflections.




Polarizing filter (with locking screw)

IMPL series

Model	Lens filter diameter
IMPL-M255	M25.5 x P0.5
IMPL-M270	M27.0 x P0.5
IMPL-M305	M30.5 x P0.5

It is a type of polarizing filter that is attached to the front end of a camera lens. Please use it in conjunction with the polarizing plate on the illumination side.



- Line illumination products
- Ring illumination products
- Bar illumination products
- Transmitted/area illumination products
- Dome illumination products
- Coaxial illumination products
- Special illumination products
- Kit products
- Controller products
- Other illumination products

Line illumination products

Ring illumination products

Bar illumination products

Coaxial illumination products

Special illumination products

IR products

Controller products

Other illumination products

- IDBB-LSRF
- IDBC-LSR
- IDBB-LSRH
- IDBB-LSRA
- IDBB-LSRS
- IDBC-LSRC
- IDBB-LSRC
- IDBB-RE
- IDBC-RE
- IDBB-RE
- IDBA-RK
- IQDH-RE
- IMAR-D_8ch
- IDR-LA_8ch
- IDRA-T_8ch
- IMAR-D
- IMAR-CT D
- IHR-LE
- IHRB · IHRA
- IDR-F
- IDR-F33/16
- IDR
- IDR-LA
- IDRA-T
- IFR · IPR
- IDBA-HM
- IDBA-HMS
- IDBA-HMS-IR
- IDBA-FD
- IDBA-LEH2
- IDBA-LEH
- IDBA-LE
- IDBA-SE
- IDBA-SL
- IDBA
- IDBA-Q
- IFLA · IFLB
- IDHM
- IHMA
- IHMA-V
- IFPA
- IFD
- IFD-IR
- IHMA-40D
- IFPA-D
- IPQC
- IFHA
- IDDB-KH · IDDA-KH
- IDUB
- IDD
- IDD-CB
- IQD · IQDH
- IQDA-CB
- IFVA · IFVB
- IFVA-ST
- IFV
- IV-14 · IV-30
- IHV-20 · IHVE-21
- IHVA-SP · IHSL-SP
- IBF
- IHV-FX
- RBOX
- IDBB-CH
- IDHRA
- UV-CAN
- Infrared
- Infrared
- IMAR-RGB
- IDDA-KH-RGB
- RGB Full-color
- ISU
- ISS
- Introduction of Customization
- High-speed synchronous imaging camera products
- ISC-24
- Image capture evaluation kit products
- IDMU
- ILP
- ILC
- ILV
- ILS
- IPPA_G · IRPA_G
- IPSA · IPPA
- IDGC
- IDPA
- IDCA
- IMC
- IWDV-24
- IWDV(S)-48
- ISC
- IJS
- IUS-30M2-TP/SS
- ILS-40M2-PI/SS
- SAG
- SLLUB
- LLUB
- IFC

