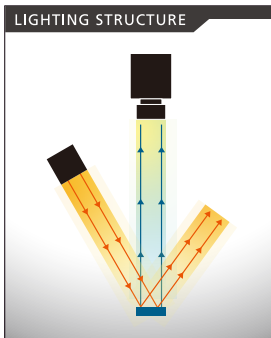
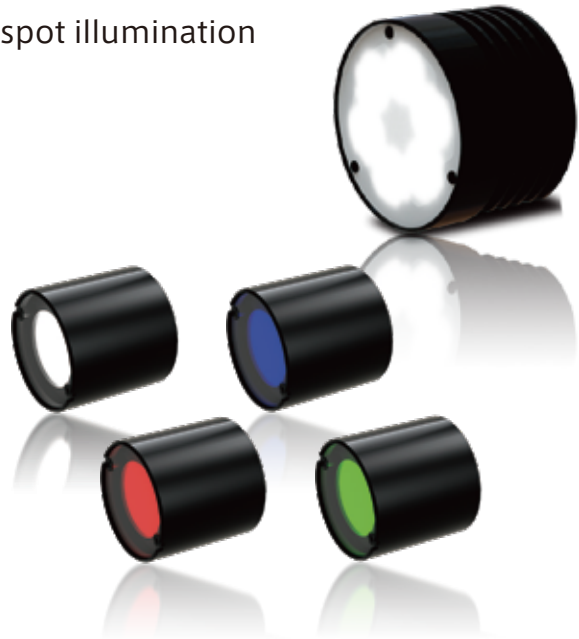


Mini Spot Illumination [IHVA-SP Series / IHSL-SP Series]

High power long distance direct irradiate spot illumination can be installed in various environments

Original Optical Design Power LEDs

- Applications**
- Machinery parts industry etc.
 - ➔ Mounting onto the robot arm
 - Beverage bottles/Plastic molding industry etc.
 - ➔ Meet the requirements of small size, lightweight, and high power-demanding environments.

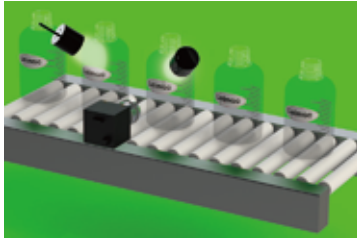


Standard Size Lineup IHVA-SP : ϕ 30mm, IHSL-SP : ϕ 50mm

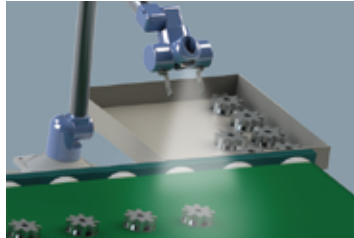
Application Examples

Ideal to be installed in various environments, including inside equipment, at the end of a robot arm, or for incident illumination in solid-state microscopy, among others.

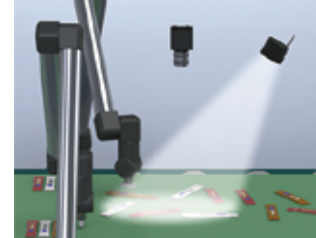
Maintaining a long distance between the subject and the illumination source



Print inspection of transparent containers



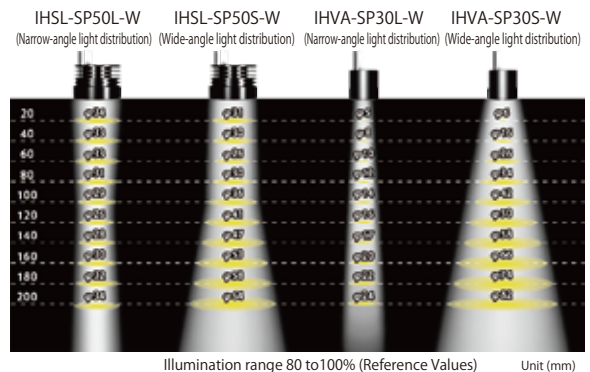
Mount to robot arms



Robotic systems for tasks such as pick-and-place operations

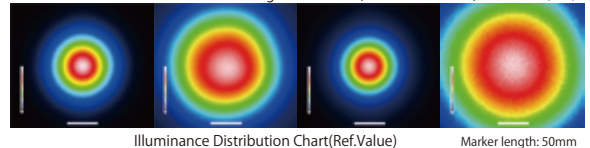
A lineup of L-Type with narrow-angle illumination and S-Type with wide-angle illumination.

- IHVA-SP30 is available in two types: IHVA-SP30L, which provides the same narrow-angle illumination as the previous model, and IHVA-SP30S, which offers an expanded illumination range compared to the previous model.



Compact & Lightweight Spot Illumination

- **IHVA-SP30**
Compact model with a diameter of ϕ 30mm \times H30mm and a weight of 60g.
Ideal for robotic systems for tasks such as pick-and-place operations, which requires small, lightweight, and high power irradiation.
- **IHSL-SP50**
Multi-Led Long distance irradiation model with a diameter of ϕ 50mm \times H35mm and a weight of 120g.
Ideal for robotic systems for tasks such as illumination from a medium to long distance.



Line illumination products

- IDBB-LSRF
- IDBC-LSR
- IDBB-LSRH
- IDBB-LSRA
- IDBB-LSRS
- IDBC-LSRC
- IDBB-LSRC
- IDBC-RE
- IDBB-RE
- IDBA-RK
- IQDH-RE
- IMAR-D_8ch
- IDR-LA-8ch
- IDRA-T-8ch
- IMAR-D
- IMAR-CT D
- IHR-LE
- IHRB · IHRA
- IDR-F
- IDR-F33/16
- IDR
- IDR-LA
- IDRA-T
- IFR · IPR
- IDBA-HM
- IDBA-HMS
- IDBA-HMS-IR
- IDBA-FD
- IDBA-LEH2
- IDBA-LEH
- IDBA-LE
- IDBA-SE
- IDBA-SL
- IDBA
- IDBA-Q
- IFLA · IFLB
- IDHM
- IHMA
- IHMA-V
- IFPA
- IFD
- IFD-IR
- IHMA-40D
- IFPA-D
- IPOC
- IFHA
- IDDB-KH · IDDA-KH
- IDUB
- IDD
- IDD-CB
- IQD · IQDH
- IQDA-CB
- IFVA · IFVB
- IFVA-ST
- IFV
- IV-14 · IV-30
- IHV-20 · IHVE-21

Ring illumination products

- IRING-1
- IRING-2
- IRING-3
- IRING-4
- IRING-5
- IRING-6
- IRING-7
- IRING-8
- IRING-9
- IRING-10
- IRING-11
- IRING-12
- IRING-13
- IRING-14
- IRING-15
- IRING-16
- IRING-17
- IRING-18
- IRING-19
- IRING-20
- IRING-21
- IRING-22
- IRING-23
- IRING-24
- IRING-25
- IRING-26
- IRING-27
- IRING-28
- IRING-29
- IRING-30
- IRING-31
- IRING-32
- IRING-33
- IRING-34
- IRING-35
- IRING-36
- IRING-37
- IRING-38
- IRING-39
- IRING-40
- IRING-41
- IRING-42
- IRING-43
- IRING-44
- IRING-45
- IRING-46
- IRING-47
- IRING-48
- IRING-49
- IRING-50
- IRING-51
- IRING-52
- IRING-53
- IRING-54
- IRING-55
- IRING-56
- IRING-57
- IRING-58
- IRING-59
- IRING-60
- IRING-61
- IRING-62
- IRING-63
- IRING-64
- IRING-65
- IRING-66
- IRING-67
- IRING-68
- IRING-69
- IRING-70
- IRING-71
- IRING-72
- IRING-73
- IRING-74
- IRING-75
- IRING-76
- IRING-77
- IRING-78
- IRING-79
- IRING-80
- IRING-81
- IRING-82
- IRING-83
- IRING-84
- IRING-85
- IRING-86
- IRING-87
- IRING-88
- IRING-89
- IRING-90
- IRING-91
- IRING-92
- IRING-93
- IRING-94
- IRING-95
- IRING-96
- IRING-97
- IRING-98
- IRING-99
- IRING-100

Bar illumination products

- IBAR-1
- IBAR-2
- IBAR-3
- IBAR-4
- IBAR-5
- IBAR-6
- IBAR-7
- IBAR-8
- IBAR-9
- IBAR-10
- IBAR-11
- IBAR-12
- IBAR-13
- IBAR-14
- IBAR-15
- IBAR-16
- IBAR-17
- IBAR-18
- IBAR-19
- IBAR-20
- IBAR-21
- IBAR-22
- IBAR-23
- IBAR-24
- IBAR-25
- IBAR-26
- IBAR-27
- IBAR-28
- IBAR-29
- IBAR-30
- IBAR-31
- IBAR-32
- IBAR-33
- IBAR-34
- IBAR-35
- IBAR-36
- IBAR-37
- IBAR-38
- IBAR-39
- IBAR-40
- IBAR-41
- IBAR-42
- IBAR-43
- IBAR-44
- IBAR-45
- IBAR-46
- IBAR-47
- IBAR-48
- IBAR-49
- IBAR-50
- IBAR-51
- IBAR-52
- IBAR-53
- IBAR-54
- IBAR-55
- IBAR-56
- IBAR-57
- IBAR-58
- IBAR-59
- IBAR-60
- IBAR-61
- IBAR-62
- IBAR-63
- IBAR-64
- IBAR-65
- IBAR-66
- IBAR-67
- IBAR-68
- IBAR-69
- IBAR-70
- IBAR-71
- IBAR-72
- IBAR-73
- IBAR-74
- IBAR-75
- IBAR-76
- IBAR-77
- IBAR-78
- IBAR-79
- IBAR-80
- IBAR-81
- IBAR-82
- IBAR-83
- IBAR-84
- IBAR-85
- IBAR-86
- IBAR-87
- IBAR-88
- IBAR-89
- IBAR-90
- IBAR-91
- IBAR-92
- IBAR-93
- IBAR-94
- IBAR-95
- IBAR-96
- IBAR-97
- IBAR-98
- IBAR-99
- IBAR-100

Special illumination products

- ISPECIAL-1
- ISPECIAL-2
- ISPECIAL-3
- ISPECIAL-4
- ISPECIAL-5
- ISPECIAL-6
- ISPECIAL-7
- ISPECIAL-8
- ISPECIAL-9
- ISPECIAL-10
- ISPECIAL-11
- ISPECIAL-12
- ISPECIAL-13
- ISPECIAL-14
- ISPECIAL-15
- ISPECIAL-16
- ISPECIAL-17
- ISPECIAL-18
- ISPECIAL-19
- ISPECIAL-20
- ISPECIAL-21
- ISPECIAL-22
- ISPECIAL-23
- ISPECIAL-24
- ISPECIAL-25
- ISPECIAL-26
- ISPECIAL-27
- ISPECIAL-28
- ISPECIAL-29
- ISPECIAL-30
- ISPECIAL-31
- ISPECIAL-32
- ISPECIAL-33
- ISPECIAL-34
- ISPECIAL-35
- ISPECIAL-36
- ISPECIAL-37
- ISPECIAL-38
- ISPECIAL-39
- ISPECIAL-40
- ISPECIAL-41
- ISPECIAL-42
- ISPECIAL-43
- ISPECIAL-44
- ISPECIAL-45
- ISPECIAL-46
- ISPECIAL-47
- ISPECIAL-48
- ISPECIAL-49
- ISPECIAL-50
- ISPECIAL-51
- ISPECIAL-52
- ISPECIAL-53
- ISPECIAL-54
- ISPECIAL-55
- ISPECIAL-56
- ISPECIAL-57
- ISPECIAL-58
- ISPECIAL-59
- ISPECIAL-60
- ISPECIAL-61
- ISPECIAL-62
- ISPECIAL-63
- ISPECIAL-64
- ISPECIAL-65
- ISPECIAL-66
- ISPECIAL-67
- ISPECIAL-68
- ISPECIAL-69
- ISPECIAL-70
- ISPECIAL-71
- ISPECIAL-72
- ISPECIAL-73
- ISPECIAL-74
- ISPECIAL-75
- ISPECIAL-76
- ISPECIAL-77
- ISPECIAL-78
- ISPECIAL-79
- ISPECIAL-80
- ISPECIAL-81
- ISPECIAL-82
- ISPECIAL-83
- ISPECIAL-84
- ISPECIAL-85
- ISPECIAL-86
- ISPECIAL-87
- ISPECIAL-88
- ISPECIAL-89
- ISPECIAL-90
- ISPECIAL-91
- ISPECIAL-92
- ISPECIAL-93
- ISPECIAL-94
- ISPECIAL-95
- ISPECIAL-96
- ISPECIAL-97
- ISPECIAL-98
- ISPECIAL-99
- ISPECIAL-100

Kit products

- IKIT-1
- IKIT-2
- IKIT-3
- IKIT-4
- IKIT-5
- IKIT-6
- IKIT-7
- IKIT-8
- IKIT-9
- IKIT-10
- IKIT-11
- IKIT-12
- IKIT-13
- IKIT-14
- IKIT-15
- IKIT-16
- IKIT-17
- IKIT-18
- IKIT-19
- IKIT-20
- IKIT-21
- IKIT-22
- IKIT-23
- IKIT-24
- IKIT-25
- IKIT-26
- IKIT-27
- IKIT-28
- IKIT-29
- IKIT-30
- IKIT-31
- IKIT-32
- IKIT-33
- IKIT-34
- IKIT-35
- IKIT-36
- IKIT-37
- IKIT-38
- IKIT-39
- IKIT-40
- IKIT-41
- IKIT-42
- IKIT-43
- IKIT-44
- IKIT-45
- IKIT-46
- IKIT-47
- IKIT-48
- IKIT-49
- IKIT-50
- IKIT-51
- IKIT-52
- IKIT-53
- IKIT-54
- IKIT-55
- IKIT-56
- IKIT-57
- IKIT-58
- IKIT-59
- IKIT-60
- IKIT-61
- IKIT-62
- IKIT-63
- IKIT-64
- IKIT-65
- IKIT-66
- IKIT-67
- IKIT-68
- IKIT-69
- IKIT-70
- IKIT-71
- IKIT-72
- IKIT-73
- IKIT-74
- IKIT-75
- IKIT-76
- IKIT-77
- IKIT-78
- IKIT-79
- IKIT-80
- IKIT-81
- IKIT-82
- IKIT-83
- IKIT-84
- IKIT-85
- IKIT-86
- IKIT-87
- IKIT-88
- IKIT-89
- IKIT-90
- IKIT-91
- IKIT-92
- IKIT-93
- IKIT-94
- IKIT-95
- IKIT-96
- IKIT-97
- IKIT-98
- IKIT-99
- IKIT-100

Controller products

- ICONTROLLER-1
- ICONTROLLER-2
- ICONTROLLER-3
- ICONTROLLER-4
- ICONTROLLER-5
- ICONTROLLER-6
- ICONTROLLER-7
- ICONTROLLER-8
- ICONTROLLER-9
- ICONTROLLER-10
- ICONTROLLER-11
- ICONTROLLER-12
- ICONTROLLER-13
- ICONTROLLER-14
- ICONTROLLER-15
- ICONTROLLER-16
- ICONTROLLER-17
- ICONTROLLER-18
- ICONTROLLER-19
- ICONTROLLER-20
- ICONTROLLER-21
- ICONTROLLER-22
- ICONTROLLER-23
- ICONTROLLER-24
- ICONTROLLER-25
- ICONTROLLER-26
- ICONTROLLER-27
- ICONTROLLER-28
- ICONTROLLER-29
- ICONTROLLER-30
- ICONTROLLER-31
- ICONTROLLER-32
- ICONTROLLER-33
- ICONTROLLER-34
- ICONTROLLER-35
- ICONTROLLER-36
- ICONTROLLER-37
- ICONTROLLER-38
- ICONTROLLER-39
- ICONTROLLER-40
- ICONTROLLER-41
- ICONTROLLER-42
- ICONTROLLER-43
- ICONTROLLER-44
- ICONTROLLER-45
- ICONTROLLER-46
- ICONTROLLER-47
- ICONTROLLER-48
- ICONTROLLER-49
- ICONTROLLER-50
- ICONTROLLER-51
- ICONTROLLER-52
- ICONTROLLER-53
- ICONTROLLER-54
- ICONTROLLER-55
- ICONTROLLER-56
- ICONTROLLER-57
- ICONTROLLER-58
- ICONTROLLER-59
- ICONTROLLER-60
- ICONTROLLER-61
- ICONTROLLER-62
- ICONTROLLER-63
- ICONTROLLER-64
- ICONTROLLER-65
- ICONTROLLER-66
- ICONTROLLER-67
- ICONTROLLER-68
- ICONTROLLER-69
- ICONTROLLER-70
- ICONTROLLER-71
- ICONTROLLER-72
- ICONTROLLER-73
- ICONTROLLER-74
- ICONTROLLER-75
- ICONTROLLER-76
- ICONTROLLER-77
- ICONTROLLER-78
- ICONTROLLER-79
- ICONTROLLER-80
- ICONTROLLER-81
- ICONTROLLER-82
- ICONTROLLER-83
- ICONTROLLER-84
- ICONTROLLER-85
- ICONTROLLER-86
- ICONTROLLER-87
- ICONTROLLER-88
- ICONTROLLER-89
- ICONTROLLER-90
- ICONTROLLER-91
- ICONTROLLER-92
- ICONTROLLER-93
- ICONTROLLER-94
- ICONTROLLER-95
- ICONTROLLER-96
- ICONTROLLER-97
- ICONTROLLER-98
- ICONTROLLER-99
- ICONTROLLER-100

Other illumination products

- IOther-1
- IOther-2
- IOther-3
- IOther-4
- IOther-5
- IOther-6
- IOther-7
- IOther-8
- IOther-9
- IOther-10
- IOther-11
- IOther-12
- IOther-13
- IOther-14
- IOther-15
- IOther-16
- IOther-17
- IOther-18
- IOther-19
- IOther-20
- IOther-21
- IOther-22
- IOther-23
- IOther-24
- IOther-25
- IOther-26
- IOther-27
- IOther-28
- IOther-29
- IOther-30
- IOther-31
- IOther-32
- IOther-33
- IOther-34
- IOther-35
- IOther-36
- IOther-37
- IOther-38
- IOther-39
- IOther-40
- IOther-41
- IOther-42
- IOther-43
- IOther-44
- IOther-45
- IOther-46
- IOther-47
- IOther-48
- IOther-49
- IOther-50
- IOther-51
- IOther-52
- IOther-53
- IOther-54
- IOther-55
- IOther-56
- IOther-57
- IOther-58
- IOther-59
- IOther-60
- IOther-61
- IOther-62
- IOther-63
- IOther-64
- IOther-65
- IOther-66
- IOther-67
- IOther-68
- IOther-69
- IOther-70
- IOther-71
- IOther-72
- IOther-73
- IOther-74
- IOther-75
- IOther-76
- IOther-77
- IOther-78
- IOther-79
- IOther-80
- IOther-81
- IOther-82
- IOther-83
- IOther-84
- IOther-85
- IOther-86
- IOther-87
- IOther-88
- IOther-89
- IOther-90
- IOther-91
- IOther-92
- IOther-93
- IOther-94
- IOther-95
- IOther-96
- IOther-97
- IOther-98
- IOther-99
- IOther-100

Line illumination products

- IDBB-LSRF
- IDBC-LSR
- IDBB-LSRH
- IDBB-LSRA
- IDBB-LSRS
- IDBC-LSRC
- IDBB-LSRC
- IDBC-RE
- IDBB-RE
- IDBA-RK
- IDQH-RE
- IMAR-D_8ch
- IDR-LA-8ch
- IDRA-T-8ch
- IMAR-D
- IMAR-CT-D
- IHR-LE
- IHRB · IHRA
- IDR-F
- IDR-F33/16
- IDR
- IDR-LA
- IDRA-T
- IFR · IPR
- IDBA-HM
- IDBA-HMS
- IDBA-HMS-IR
- IDBA-FD
- IDBA-LEH2
- IDBA-LEH
- IDBA-LE
- IDBA-SE
- IDBA-SL
- IDBA
- IDBA-Q
- IFLA · IFLB
- IDHM
- IHMA
- IHMA-V
- IFPA
- IFD
- IFD-IR
- IHMA-40D
- IFPA-D
- IPQC
- IFHA
- IDDB-KH · IDDA-KH
- IDUB
- IDD
- IDD-CB
- IQD · IQDH
- IQDA-CB
- IFVA · IFVB
- IFVA-ST
- IFV
- IV-14 · IV-30
- IHV-20 · IHVE-21

Special illumination products

- IHVA-SP · IHSL-SP
- IBF
- IHV-FX
- RBOX
- IDBB-CH
- IDHRA
- UV-CAN
- Infrared
- IMAR-RGB
- IDDA-KH-RGB
- RGB Full-color
- ISU
- ISS

Introduction of Customization

for products

- High-speed synchronous imaging camera products
- ISC-24
- Image capture evaluation kit products
- IDMU
- ILP
- ILC
- ILV
- ILS

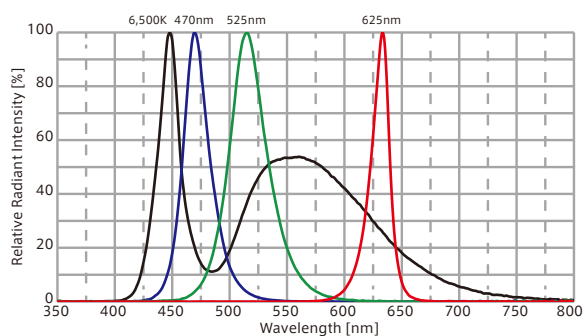
Controller products

- IPPA_G · IRPA_G
- IPSA · IPPA
- IDGC
- IDPA
- IDCA
- IMC
- IWDV-24
- IWDV(S)-48
- ISC
- IJS
- IJS-30M2-TP/SS
- ILS-40M2-PI/SS

Other illumination products

- SAG
- SLLUB
- LLUB
- IFIC

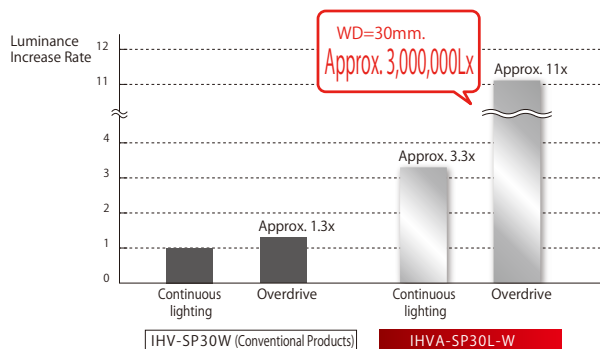
Optical Spectrum (Ref.Value)



Achieve Even Brighter Illumination With Overdrive (Ref.value)

IHVA-SP30 can be illuminated approx. 3.5 times brighter than the continuous light by using a resistance box for overdrive, RBOX-SAG. It can excel in high-speed inspections, such as xenon replacement, and more.

Compared to IHVA-SP30, IHSL-SP50 emits light with a brightness of 1.4 times or more in constant light comparison for the L-Type with narrow-angle illumination, and 1.8 times or more in constant light comparison for the S-Type with wide-angle light distribution (WD=1,000mm). Approx. 4 times brighter than the continuous illumination when overdriving, which is ideal for situations requiring higher illumination from a long distance.



Model	Color	Input Voltage	Input Current	SAG (※)	Applicable Controller	Drawing
IHVA-SP30 ■-□	R W B G	-	700mA	-	ILC-700M2-VI (P.199) IDCA series (P.213)	1
IHSL-SP50 ■-□	R W B G	DC12V	Power Consumption 7 W	FF	ILP-30M2 (P.197), etc.	2

- ★IHVA-SP30 can be connected to a controller other than the applicable controller via a resistance box.
- ★The light distribution type (S=wide-angle, L=narrow-angle) is indicated by ■ in the model table.
- ★The emission color (W=White, R=Red, B=Blue, G=Green) is indicated by □ in the model table.
- ★For IHSL-SP50, DC 24V model is also available.
- ※SAG: The maximum instantaneous upper limit output voltage setting value in the controller for the corresponding illumination when used in combination with the Overdrive controller.

Optional Parts Resistance Box (Foe IBF-LXS/LX series)



This is necessary when using with DC12V output controller. By using a resistance box, it can be connected to controllers (ILP, IDGC, etc.) other than the specified controller. It is also required when enabling overdrive illumination. Please refer to P.160 for more details.

Extension Cables

- IHVA-SP30: I-CB-S ■-HV3W, I-CB-S ■R-HV3W-C02 (robot cable) (P.248)
- IHSL-SP50: I-CB-S ■, I-CB-S ■R-C02 (robot cable) (P.248)
- ★ The length (m) is indicated by ■ (■=1,2,3,4,5,10) in the model.

