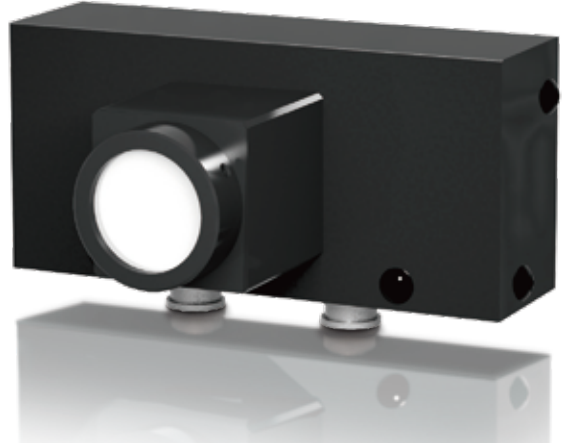


Nano-Strobe Flashing Illumination [ISU Series]

With nano-second emission, it is possible to capture the flight state of inkjet droplets from a single droplet

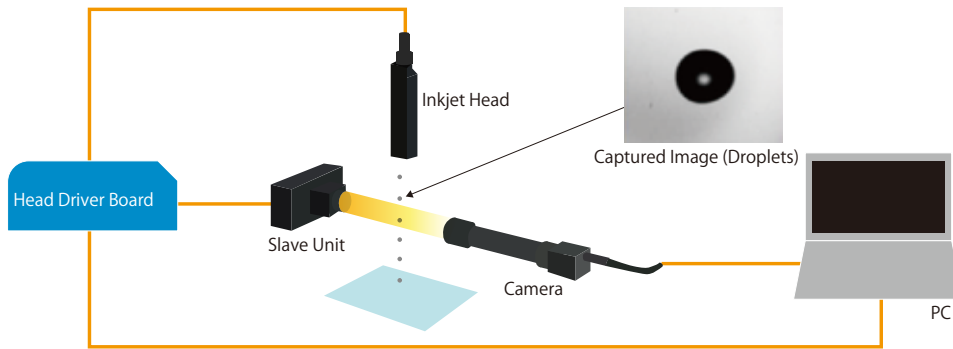
Original Optical Design

Power LEDs



- Line illumination products
- Ring illumination products
- Bar illumination products
- Transmitted/area illumination products
- Dome illumination products
- Special illumination products
- Controller products
- Other illumination products

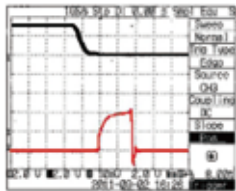
Components



Supports multiple head nozzles from a single unit, allowing for expanded functionality. Capable of controlling up to 18 units simultaneously, providing enhanced versatility and performance.

Trigger Signal

150ns response time until the light turns on
250ns response time until stabilization



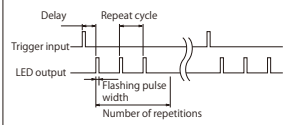
Master Unit



Other function

The delay (0-5ms) and repeated lighting (1 to 100 times per trigger) functions are installed as standard, which enables observation for various occasions.

Light Control Image



Power LED adoption

Light emits at min.100ns (max.1 μs) of high-speed overdrive lighting. Images of a single liquid droplet can be captured.

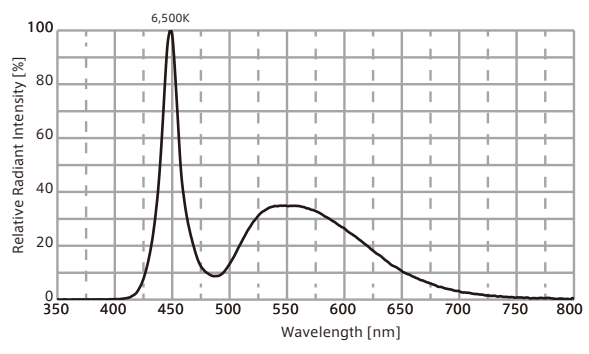


Slave Unit

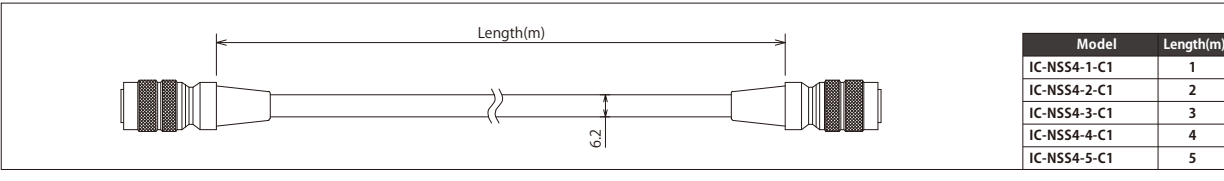
One master is capable of controlling 18unit slaves at maximum.

- Line illumination products
- IDBB-LSRF
- IDBB-LSRH
- IDBB-LSRA
- IDBB-LSRS
- IDBB-LSRC
- IDBB-LSRE
- IDBB-LSRE
- IDBA-RK
- IQDH-RE
- IMAR-D_8ch
- IDR-LA-8ch
- IDRA-T-8ch
- IMAR-D
- IMAR-CT D
- IHR-LE
- IHRB · IHRA
- IDR-F
- IDR-F33/16
- IDR
- IDR-LA
- IDRA-T
- IFR · IPR
- IDBA-HM
- IDBA-HMS
- IDBA-HMS-IR
- IDBA-FD
- IDBA-LEH2
- IDBA-LEH
- IDBA-LE
- IDBA-SE
- IDBA-SL
- IDBA
- IDBA-Q
- IFLA · IFLB
- IDHM
- IHMA
- IHMA-V
- IFPA
- IFD
- IFD-IR
- IHMA-40D
- IFPA-D
- IPQC
- IFHA
- IDDB-KH · IDDA-KH
- IDUB
- IDD
- IDD-CB
- IQD · IQDH
- IQDA-CB
- IFVA · IFVB
- IFVA-ST
- IFV
- IV-14 · IV-30
- IHV-20 · IHVE-21
- IHVA-SP · IHSL-SP
- IBF
- IHV-FX
- RBOX
- IDBB-CH
- IDHRA
- UV-CAN
- Infrared
- IMAR-RGB
- IDDA-KH-RGB
- RGB Full-color
- ISU
- ISS
- Introduction of Customization
- High speed synchronous imaging camera products
- ISC-24
- Image capture evaluation kit products
- IDMU
- IDMLP
- ILC
- ILV
- ILS
- IPPA_G · IRPA_G
- IPSA · IPPA
- IDGC
- IDPA
- IDCA
- IMC
- IWDV-24
- IWDV(S)-48
- ISC
- IJS
- IUS-30M2-TP/SS
- ILS-40M2-PI/SS
- SAG
- SLLUB
- LLUB
- IFIC

Optical Spectrum (Ref.Value)



Communication Cable Between Master Unit And Slave Unit



Item	Specification
Model	Master Part: ISU-NSMST-TP (TTL) Master Unit: ISU-NSMST-TP-OC (Open Collector) Slave Unit: ISU-NSSL-LX30AW
Output Control Method	Variable Strobe Voltage (256 levels)
Input Voltage	DC24V 4A (MAX)
Output Power	3A (MAX) per unit
Color	White
Number of Slave Units	MAX18 units per 1 master unit
External Trigger	TTL / Open Collector
External Trigger Interlock	Duty within 5%
Number of LED lighting repetitions	1 to 100 times per trigger
Lighting Cycle	2 to 20μs (1μs step)
Lighting Width	100ns to 1μs (100ns step)*
Delay	0-5ms (1μs step)

*Lighting may become unstable under 200ns.

