

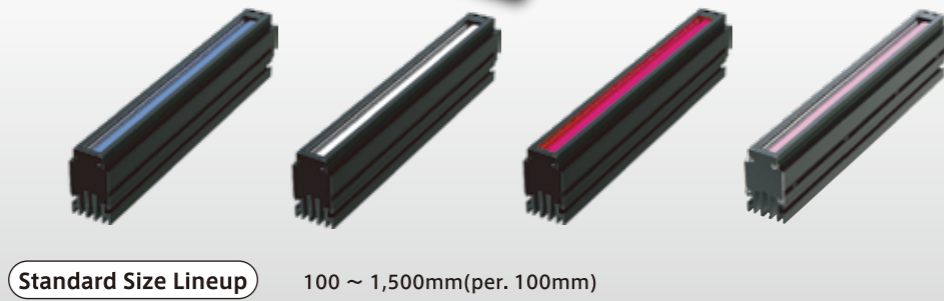
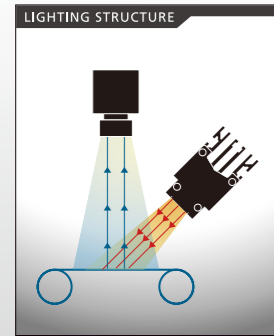
NEW

1,200,000 Lx ~Line illumination product-Brimax III (Natural Air Cooling) [IDBC-LSR Series]

Achieves a high intensity of over 1,200,000Lx~(High uniformity type: 900,000 lx~)
Even brighter than conventional models
High intensity and high uniformity 2-types new released!

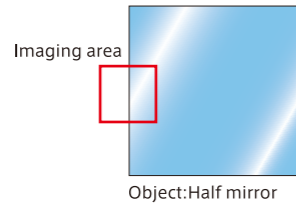
Natural Air Cooling Original Technology&Design High-Power LEDs

- Applications**
- High-performance film/Paper, Textiles and Fiber-related /FPD-related / Steel/Non-ferrous metals/Metal/Glass etc. industries
 - Surface scratch/Dirt/Particle/MURA inspection.etc
 - Electronic components etc. industries
 - Pattern and scratch inspection of PCBs.etc

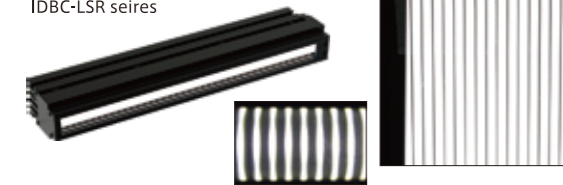


Available In 2 Types To Suit Your Applications

Available in 2 types of illumination(High brightness and high uniformity)
Due to the characteristics of the element/lens, there may be brightness unevenness when using the High-intensity type for close-range imaging.
However, with the high-uniformity type, it is possible to suppress brightness unevenness by widely diffusing light.

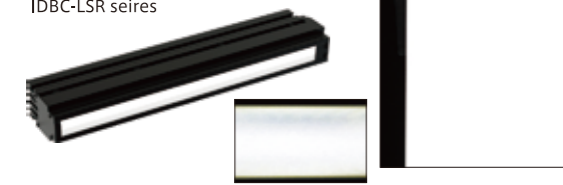


High-intensity type
IDBC-LSR series



The high-intensity type is very bright due to its high directivity of light, but there may be uneven brightness when taking pictures at close range.

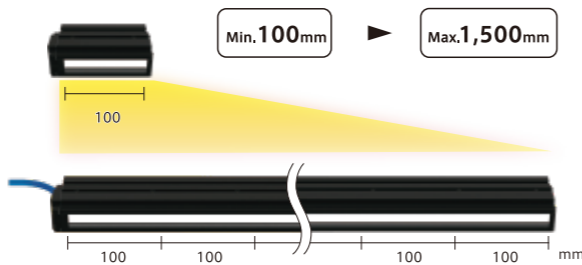
High-uniformity type
IDBC-LSR series



The high uniformity type enables illumination that suppresses brightness unevenness even when taking close-up images by diffusing light widely.

A Wide Range Of Size Variations Available

Long lengths up to 1,500mm are standardly available(per. 100mm)!



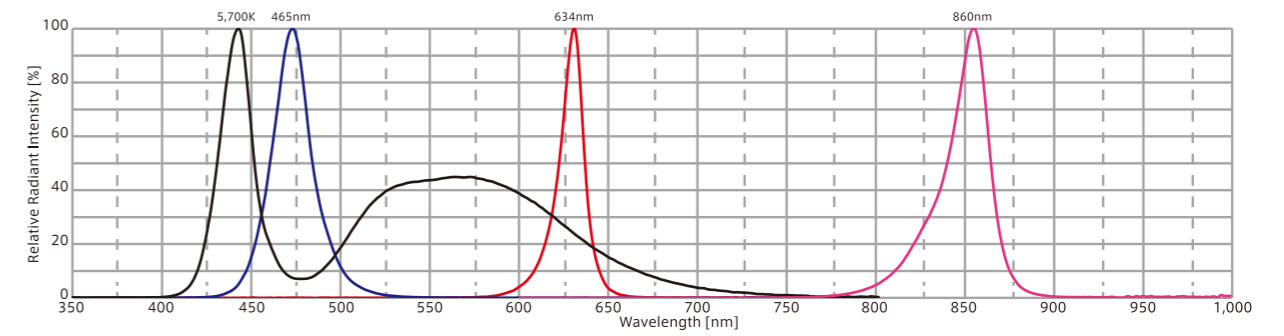
Easy Installation To Fit Clean Room Environments.

Dedicated slide nut insertion slot on the side of the housing is prepared. The illumination could be fixed with the included standard M4 slide nut, or optional M3 or M5 slide nuts.
M5 hex nut insertion slot on the back of the housing is also prepared, allowing you to secure it in the position of your choice.

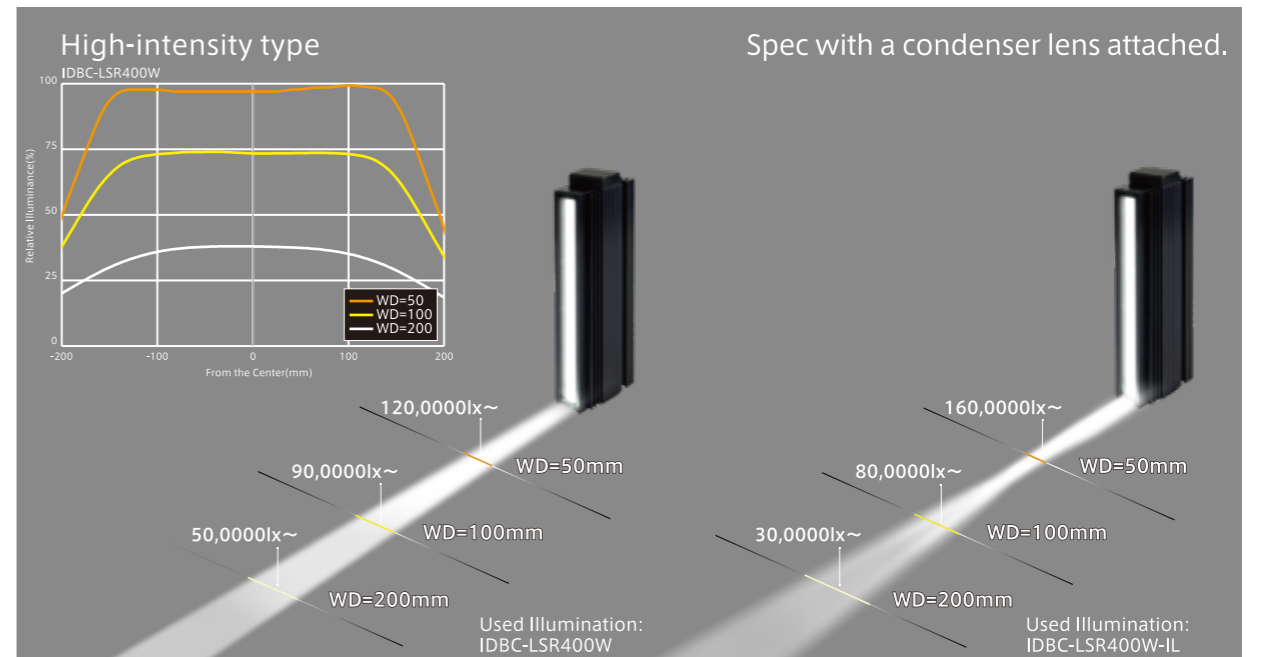


	Model of dedicated slide nut
For M3	INBB-M3-5P
For M4	INBB-M4-5P
For M5	INBB-M5-5P

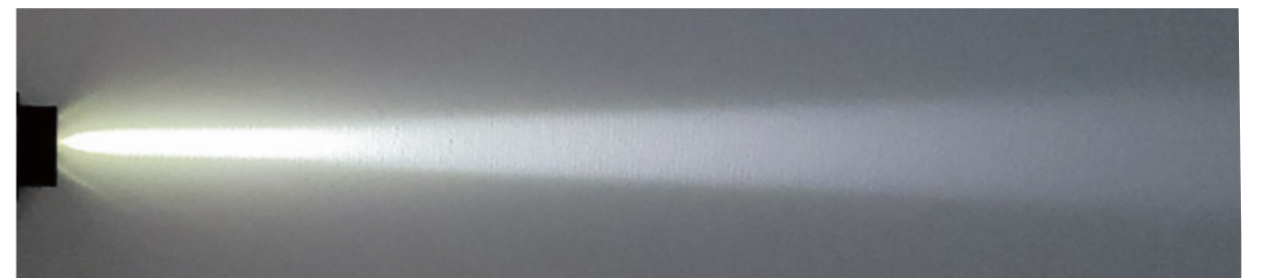
Optical Spectrum (Ref.Value)



Illuminance Characteristics(Ref.value)



Illumination Irradiation Images



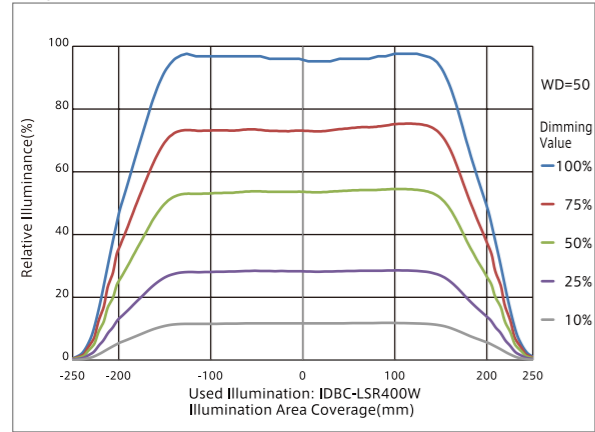
Used Illumination: IDBC-LSR400W

<Ray Image>

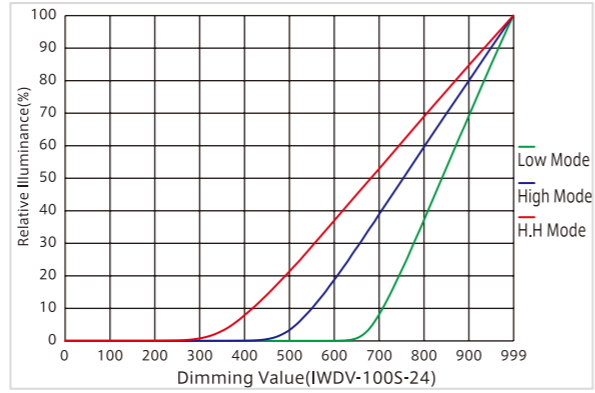
- IDBB-LSRF
- IDBC-LSR
- IDBB-LSRH
- IDBB-LSRA
- IDBB-LSRC
- IDBB-LSRC
- IDBB-LSRC
- IDBC-RE
- IDBB-RE
- IDBA-RK
- IQDH-RE
- IMAR-D -8ch
- IDR-LA-8ch
- IDRA-T-8ch
- IMAR-D
- IMAR-CT D
- IHR-LE
- IHRB · IHRA
- IDR-F
- IDR-F33/16
- IDR
- IDR-LA
- IDRA-T
- IFR · IPR
- IDBA-HM
- IDBA-HMS
- IDBA-HMS-IR
- IDBA-FD
- IDBA-LEH2
- IDBA-LEH
- IDBA-LE
- IDBA-SE
- IDBA-SL
- IDBA
- IDBA-Q
- IFLA · IFLB
- IDHM
- IHMA
- IHMA-V
- IFPA
- IFD-IR
- IHMA-40D
- IFPA-D
- IPQC
- IFHA
- IDDB-KH · IDDA-KH
- IDUB
- IDD
- IDD-CB
- IQD · IQDH
- IQDA-CB
- IFVA · IFVB
- IFVA-ST
- IFV
- IV-14 · IV-30
- IHV-20 · IHVE-21
- IHVA-SP · IHSL-SP
- IBF
- IHV-FX
- RBOX
- IDBB-CH
- IDHRA
- UV-CAN
- Infrared
- Infrared
- IMAR-RGB
- IDDA-KH-RGB
- RGB Full-color
- ISU
- ISS
- Introduction of Customization
- High-speed photography products
- ISC-24
- Image capture evaluation kit products
- IDMU
- ILP
- ILC
- ILV
- ILS
- IPPA · G · IRPA · G
- IPSA · IPPA
- IDGC
- IDPA
- IDCA
- IMC
- IWDV-24
- IWDV(S)-48
- ISC
- IJS
- IJS-30M2-TP/SS
- ILS-40M2-PI/SS
- SAG
- SLLUB
- LLUB
- IFIC

Dimming Change Characteristics(Ref.Value)

(Longitudinal direction)



Dimming Output Linearity(Ref.Value)



Model	Color	Power Consumption(W)	Input Voltage	Applicable Controller	Drawing
IDBC-LSR100	R W B IR (860)	15 / 20 / 20 / 16	DC24V	IWDV-100S-24 (P.217)	n=1
IDBC-LSR200	R W B IR (860)	30 / 40 / 40 / 32			n=2
IDBC-LSR300	R W B IR (860)	45 / 60 / 60 / 48			n=3
IDBC-LSR400	R W B IR (860)	60 / 80 / 80 / 64			n=4
IDBC-LSR500	R W B IR (860)	75 / 100 / 100 / 80			n=5
IDBC-LSR600	R W B IR (860)	90 / 120 / 120 / 96		IIWDV-300S-24 IWDV-600M2-24 (P.217)	n=6
IDBC-LSR700	R W B IR (860)	105 / 140 / 140 / 112			n=7
IDBC-LSR800	R W B IR (860)	120 / 160 / 160 / 128			n=8
IDBC-LSR900	R W B IR (860)	135 / 180 / 180 / 144			n=9
IDBC-LSR1000	R W B IR (860)	150 / 200 / 200 / 160			n=10
IDBC-LSR1100	R W B IR (860)	165 / 220 / 220 / 176			n=11
IDBC-LSR1200	R W B IR (860)	180 / 240 / 240 / 192			n=12
IDBC-LSR1300	R W B IR (860)	195 / 260 / 260 / 208			n=13
IDBC-LSR1400	R W B IR (860)	210 / 280 / 280 / 224			n=14
IDBC-LSR1500	R W B IR (860)	225 / 300 / 300 / 240			n=15

Model with Condenser Lens

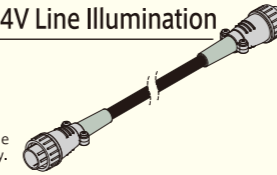
Model	Color	Power Consumption(W)	Input Voltage	Applicable Controller	Drawing
IDBC-LSR100-IL	R W B IR (860)	15 / 20 / 20 / 16	DC24V	IWDV-100S-24 (P.217)	n=1
IDBC-LSR200-IL	R W B IR (860)	30 / 40 / 40 / 32			n=2
IDBC-LSR300-IL	R W B IR (860)	45 / 60 / 60 / 48			n=3
IDBC-LSR400-IL	R W B IR (860)	60 / 80 / 80 / 64			n=4
IDBC-LSR500-IL	R W B IR (860)	75 / 100 / 100 / 80			n=5
IDBC-LSR600-IL	R W B IR (860)	90 / 120 / 120 / 96		IWDV-300S-24 IWDV-600M2-24 (P.217)	n=6
IDBC-LSR700-IL	R W B IR (860)	105 / 140 / 140 / 112			n=7
IDBC-LSR800-IL	R W B IR (860)	120 / 160 / 160 / 128			n=8
IDBC-LSR900-IL	R W B IR (860)	135 / 180 / 180 / 144			n=9
IDBC-LSR1000-IL	R W B IR (860)	150 / 200 / 200 / 160			n=10

- ★ The emission color (R=Red, W=White, B=Blue, IR=860-infrared) is indicated by □ in the model table.
- ★ For high uniformity model, -S is indicated by ■ in the model table. (Blue color is only sold as high uniformity specification)
- ★ Please note that the illumination cannot be directly connected to the controller, a connection cable of any length is necessary.
- ★ Please refer to I-CB-5-R-MCB (p.249) for the connection cable. The length of the cable (m) will be indicated in the ▽ section. (▽= 1, 2, 3, 5, 7, 10)
- ★ Please refer to IKBB-LSR▽△ (P.260) for diffusion plates.
- ★ In the ▽ section, the length of the diffusion plate is indicated in millimeters (mm). (▽= 100, 200, 300, ..., 1,400, 1,500) In the △ section, the transmittance rate (%) is indicated. The transmittance rate can be selected from 30%/60%/80%/90%, and -30/-60/-80/-90 is entered.

Connection Cable For DC24V Line Illumination

I-CB-S_R-MCB Series

This is a connection cable for DC24V line illumination that supports high capacity.



Applicable Digital Controller(Voltage control)

IWDV-24 Series

Output control: 1,000 levels
External control: Ethernet and 10-bit parallel communications, ON/OFF control
By connecting IWDV-300M1-24 to IWDV-600M2-24, it is possible to control up to a max. of 4 channels
Please refer to P. 217 for more details.



Half-Mirror Box for Line Illumination

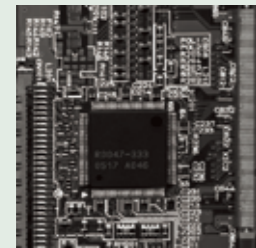
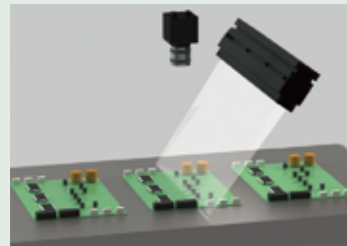
HMBOXB-LSR Series

An optional unit that enables coaxial illumination by installation. High-intensity and high-contrast images can be obtained through specular reflection and backlighting. Long lengths up to 500mm are standardly available.

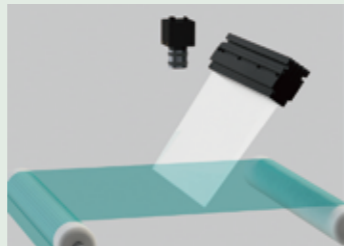


Usage Examples

Object: PCB with Electronic Components

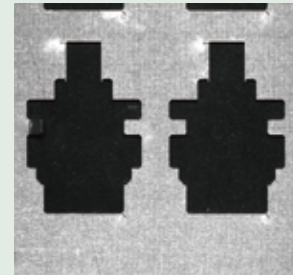


Object: Film with minor surface scratches



Sample Image

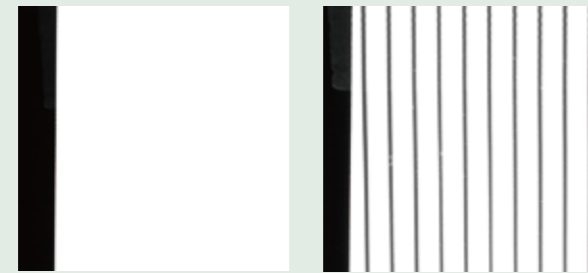
Object:Laser-processed metal plate



IDBC-LSR

With the IDBC-LSR series, it is possible to recognize fine scratches on metal surfaces and surface changes due to laser processing

Object:Half Mirror



IDBC-LSR-S

IDBC-LSR

With the IDBC-LSR-S series, imaging is possible without any reflection of the components, even with highly reflective surfaces such as mirrors.

