

Constant Voltage Dimming Controller

# Compact Constant Voltage Controller [ILV Series]

Compact designed constant voltage controller with external ON/OFF, 0-5V control function



Compact & high-cost performance constant current dimming controller DC 24V input voltage, easy to be mounted on a DIN rail. It is possible to control IMAR, IHMA, IFHA, IFVA, and other DC12V illuminations with an external DC 0-5V signal for 0-100% output control.



IMAR, IDHM, IFHA, IFVA series, etc.

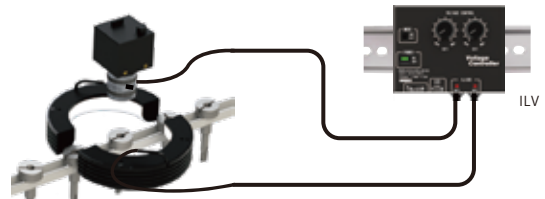
- ILV is a DC24V in constant voltage controller that can be used as a replacement for IWDV-10S-V.

## Compact Design

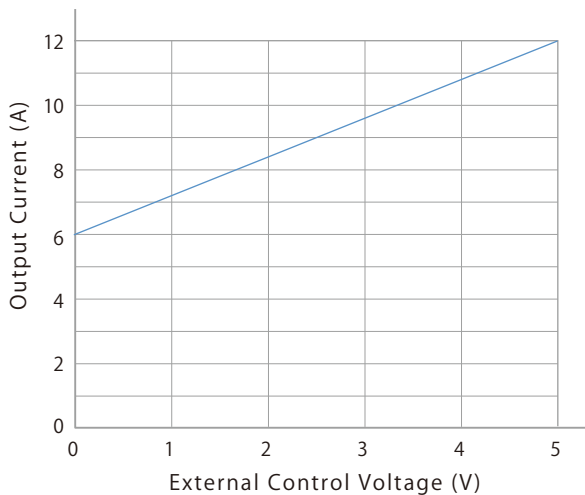


Mountable on the DIN rail easily!

## Image of Use



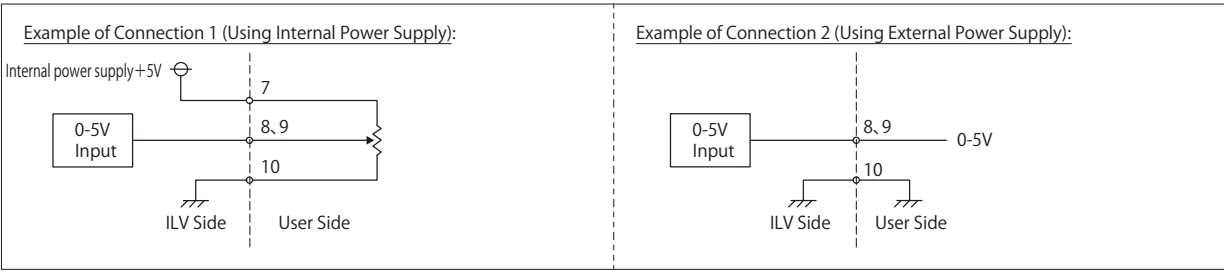
## Output Linearity Of External 0-5V Control



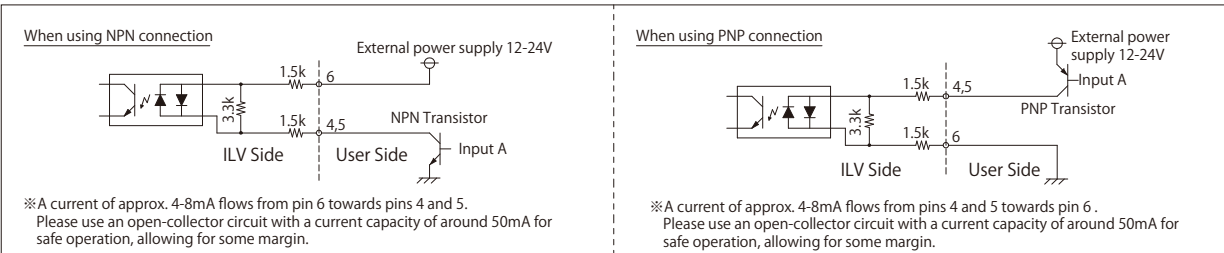
- Line illumination products
  - Ring illumination products
  - Bar illumination products
  - Transmitted/area illumination products
  - Special illumination products
  - Kit products
  - Controller products
  - Other illumination products
- IDBB-LSRF
  - IDBC-LSR
  - IDBB-LSRH
  - IDBB-LSRA
  - IDBB-LSRS
  - IDBC-LSRC
  - IDBB-LSRC
  - IDBC-RE
  - IDBB-RE
  - IDBA-RK
  - IQDH-RE
  - IMAR-D\_8ch
  - IDR-LA-8ch
  - IDRA-T-8ch
  - IMAR-D
  - IMAR-CT D
  - IHR-LE
  - IHRB · IHRA
  - IDR-F
  - IDR-F33/16
  - IDR
  - IDR-LA
  - IDRA-T
  - IFR · IPR
  - IDBA-HM
  - IDBA-HMS
  - IDBA-HMS-IR
  - IDBA-FD
  - IDBA-LEH2
  - IDBA-LEH
  - IDBA-LE
  - IDBA-SE
  - IDBA-SL
  - IDBA
  - IDBA-Q
  - IFLA · IFLB
  - IDHM
  - IHMA
  - IHMA-V
  - IFPA
  - IFD-IR
  - IHMA-40D
  - IFPA-D
  - IPOC
  - IFHA
  - IDDB-KH · IDDA-KH
  - IDUB
  - IDD
  - IDD-CB
  - IQD · IQDH
  - IQDA-CB
  - IFVA · IFVB
  - IFVA-ST
  - IFV
  - IV-14 · IV-30
  - IHV-20 · IHVE-21
  - IHVA-SP · IHSL-SP
  - IBF
  - IHV-FX
  - RBOX
  - IDBB-CH
  - IDHRA
  - UV-CAN
  - Infrared
  - Infrared
  - IMAR-RGB
  - IDDA-KH-RGB
  - RGB Full-color
  - ISU
  - ISS
  - Introduction of Customization
  - High-speed synchronous motor kit products
  - ISC-24
  - Image capture evaluation kit products
  - IDMU
  - ILP
  - ILC
  - ILV
  - ILS
  - IPPA\_G · IRPA\_G
  - IPSA · IPPA
  - IDGC
  - IDPA
  - IDCA
  - IMC
  - IWDV-24
  - IWDV(S)-48
  - ISC
  - IJS
  - IJS-30M2-TP/SS
  - ILS-40M2-PI/SS
  - SAG
  - SLLUB
  - LLUB
  - IFIC

Line illumination products  
 Ring illumination products  
 Bar illumination products  
 Transmitted/area illumination products  
 Dome illumination products  
 Special illumination products  
 for products  
 Controller products  
 Other illumination products

Example of Circuit Connection: External 0-5V Control

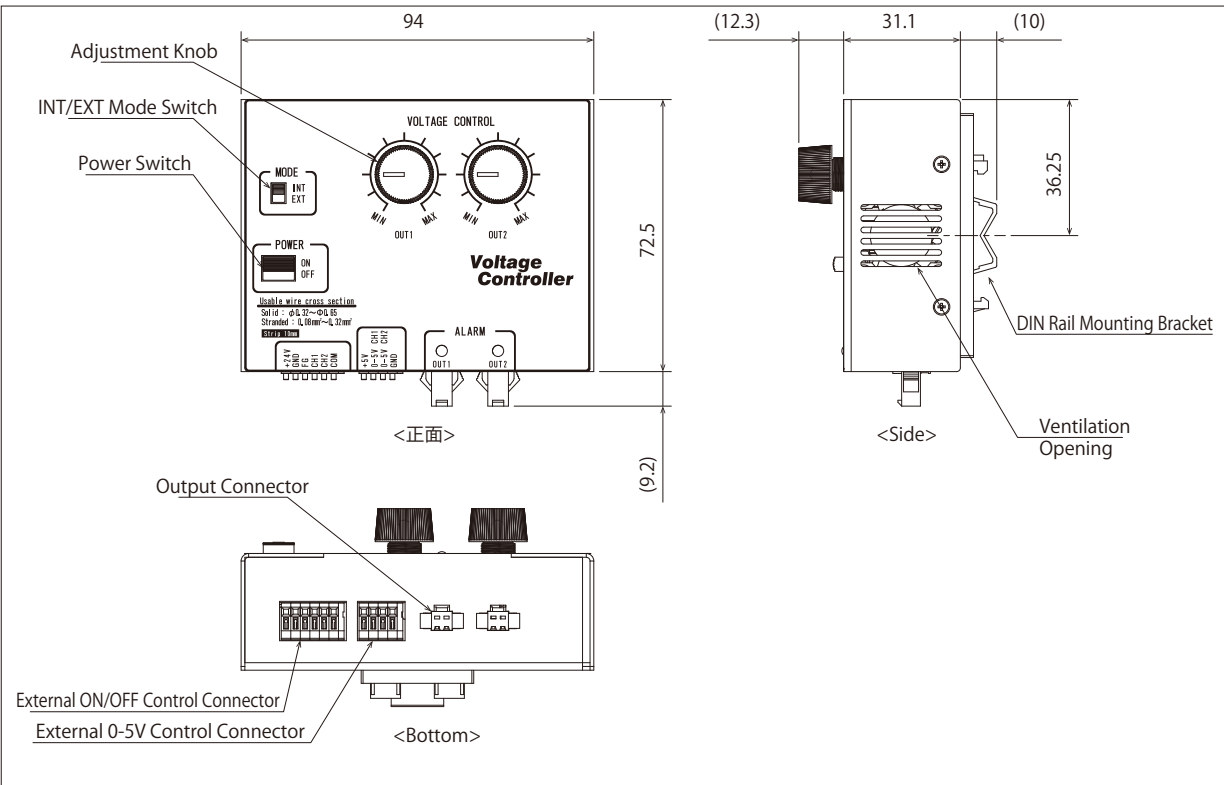


Example of Circuit Connection: External ON/OFF Control



Model	ILV-60M2-VI
Control Method	Voltage-Variable Control System
Input Voltage	DC24V
Output Voltage	DC 6~12V
Capacity	Total 60W (30W/CH)
Output Channel	2CH
External Control	External ON/OFF control External output control ( 0-5V Analog)

\*Please refer to P.252 for the details of optional parts.



- IDBB-LSRF
- IDBB-LSRH
- IDBB-LSRA
- IDBB-LSRS
- IDBB-LSRC
- IDBB-RE
- IDBB-RK
- IQDH-RE
- IMAR-D\_8ch
- IDR-LA-8ch
- IDRA-T-8ch
- IMAR-D
- IMAR-CT D
- IHR-LE
- IHRB · IHRA
- IDR-F
- IDR-F33/16
- IDR
- IDR-LA
- IDRA-T
- IFR · IPR
- IDBA-HM
- IDBA-HMS
- IDBA-HMS-IR
- IDBA-FD
- IDBA-LEH2
- IDBA-LEH
- IDBA-LE
- IDBA-SE
- IDBA-SL
- IDBA
- IDBA-Q
- IFLA · IFLB
- IDHM
- IHMA
- IHMA-V
- IFPA
- IFD
- IFD-IR
- IHMA-40D
- IFPA-D
- IPQC
- IFHA
- IDDB-KH · IDDA-KH
- IDUB
- IDD
- IDD-CB
- IQD · IQDH
- IQDA-CB
- IFVA · IFVB
- IFVA-ST
- IFV
- IV-14 · IV-30
- IHV-20 · IHVE-21
- IHVA-SP · IHSL-SP
- IBF
- IHV-FX
- RBOX
- IDBB-CH
- IDHRA
- UV-CAN
- Infrared
- Infrared
- IMAR-RGB
- IDDA-KH-RGB
- RGB Full-color
- ISU
- ISS
- Introduction of Customization
- High-speed synchronous imaging sensor kit products
- ISC-24
- Image capture evaluation kit products
- IDMU
- ILP
- ILC
- ILV
- ILS
- IPPA\_G · IRPA\_G
- IPSA · IPPA
- IDGC
- IDPA
- IDCA
- IMC
- IWDV-24
- IWDV(S)-48
- ISC
- IJS
- IUS-30M2-TP/SS
- ILS-40M2-PI/SS
- SAG
- SLUB
- LLUB
- IFC