

Constant Current Dimming Controller

High-capacity Digital Constant Current Controller for IDBB/C-LSRH [IMC Series]

Individual dimming is possible for each 100mm LEDs board with 1000-level output control
Adjust uniform illumination on the lighting side according to the shape and characteristics of the target object

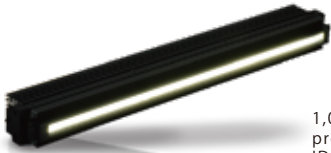


With constant current control, there is no need to worry about illumination synchronization even with ultra-high-speed shutter cameras or high-speed clock line sensor cameras.



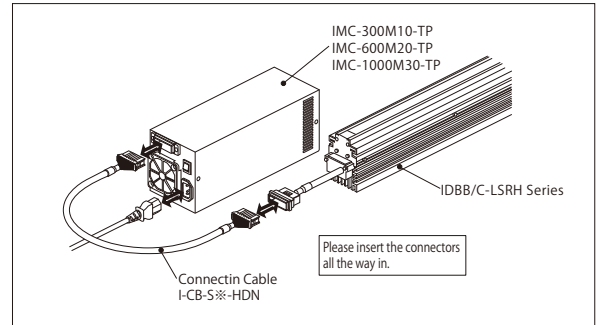
- The dedicated controller for IDBB/C-LSRH Series line illumination.
- Optimized for line sensor camera illumination with constant current output control.

Applicable Illuminations



1,000,000 lx~Line Illumination product(Natural Air Cooling)
IDBB-LSRH Series (P.23)
2,300,000~ lx~Line Illumination product(Natural Air Cooling)
IDBC-LSRH Series(Coming soon)

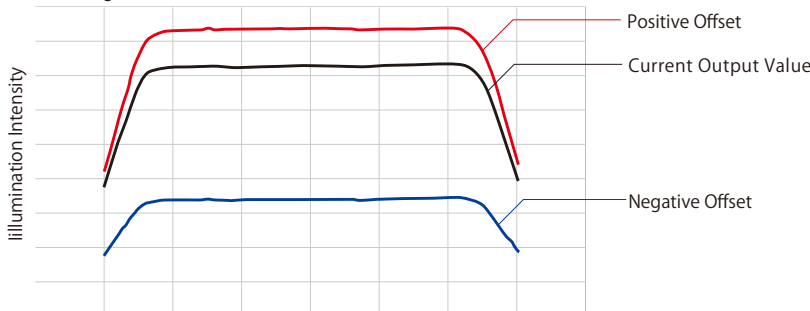
Configuration Example



Offset Output Function

Allows you to adjust the output level (brightness) of each channel while maintaining the offset balance. This means you can increase or decrease the output value (illumination intensity) while preserving the relative brightness balance between the channels. This feature ensures that the illumination's intensity remains balanced across all channels, providing precise and controlled lighting for your specific imaging needs.

(Reference Image)



Line illumination products

- IDBB-LSRF
- IDBC-LSR
- IDBB-LSRH
- IDBB-LSRA
- IDBB-LSRS
- IDBC-LSRC
- IDBB-LSRC
- IDBC-RE
- IDBB-RE
- IDBA-RK
- IQDH-RE
- IMAR-D_8ch
- IDR-LA-8ch
- IDRA-T-8ch
- IMAR-D
- IMAR-CT D
- IHR-LE
- IHRB · IHRA
- IDR-F
- IDR-F33/16
- IDR
- IDR-LA
- IDRA-T
- IFR · IPR
- IDBA-HM
- IDBA-HMS
- IDBA-HMS-IR
- IDBA-FD
- IDBA-LEH2
- IDBA-LEH
- IDBA-LE
- IDBA-SE
- IDBA-SL
- IDBA
- IDBA-Q
- IFLA · IFLB
- IDHM
- IHMA
- IHMA-V
- IFPA
- IFD-IR
- IHMA-40D
- IFPA-D
- IPOC
- IFHA
- IDDB-KH · IDDA-KH
- IDUB
- IDD
- IDD-CB
- IQD · IQDH
- IQDA-CB
- IFVA · IFVB
- IFVA-ST
- IFV
- IV-14 · IV-30
- IHV-20 · IHVE-21
- IHVA-SP · IHSL-SP
- IBF
- IHV-FX
- RBOX
- IDBB-CH
- IDHRA
- UV-CAN
- Infrared
- Infrared
- IMAR-RGB
- IDDA-KH-RGB
- RGB Full-color
- ISU
- ISS

Ring illumination products

Bar illumination products

Transmitted/area illumination products

Ceiling illumination products

Dome illumination products

Special illumination products

Introduction of Customization

High-speed synchronization series (IC products)

ISC-24

Image capture evaluation kit products

ICM products

Controller products

- IDMU
- ILP
- ILC
- ILV
- ILS
- IPPA_G · IRPA_G
- IPSA · IPPA
- IDGC
- IDPA
- IDCA
- IMC
- IWDV-24
- IWDV(S)-48
- ISC
- IJS
- IJS-30M2-TP/SS
- ILS-40M2-PI/SS
- SAG
- SLLUB
- LLUB
- IFIC

Other illumination products

Model	IMC-300M10-TP	IMC-600M20-TP	IMC-1000M30-TP
Control Method	Current-Variable Control System		
Input Power	AC100-240V 330VA 50/60Hz	AC100-240V 670VA 50/60Hz	AC100-240V 990VA 50/60Hz
Number Of Output Channels	10CH	20CH	30CH
Capacity	30W/CH		
Output Voltage	48V(MAX)		
Adjustable Current Levels	1,000 levels(※)		
Adjustable Dimming Responsiveness	0%→100% : Less than 65ms、 100%→0% : Less than 75ms		
External Control	External output control (LAN Communication) , External I/O ON/OFF		
External ON/OFF responsiveness	OFF→ON : Less than 40ms、 ON→OFF : Less than 40ms		
Compatible Illumination Length	100~1,000	1,100~2,000	2,100~3000
Exterior Diagram	1	2	3

※ Due to the physical characteristics of LEDs, there may be some variation in the output current when operating at low dimming levels between 0 and 10.

Dedicated Connection Cable

I-CB-S_-HDN series

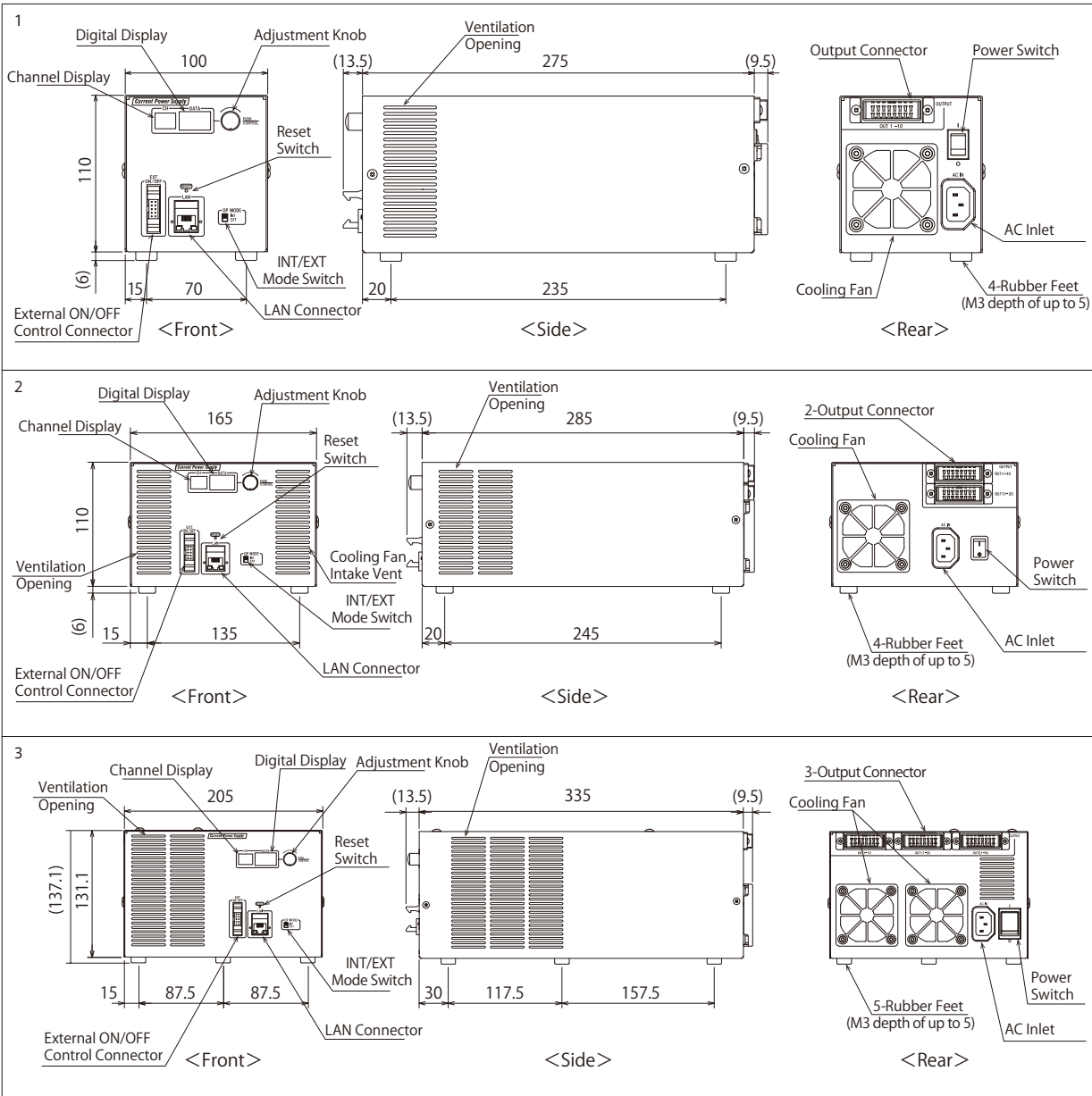
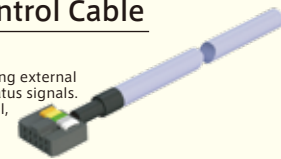
This is the connection cable used to connect with the IDBB/C-LSRH series. With just one cable, it can support up to 10 channels of output.



External ON/OFF Control Cable

IC-MIL-10 Series

This is the control cable used for inputting external ON/OFF signals and outputting error status signals. If you are using external ON/OFF control, please use the IC-MIL-10 series.



- Line illumination products
 - IDBB-LSRF
 - IDBC-LSR
 - IDBB-LSRH
 - IDBB-LSRA
 - IDBB-LSRS
 - IDBB-LSRC
 - IDBC-RE
 - IDBB-RE
 - IDBA-RK
 - IQDH-RE
 - IMAR-D_8ch
 - IDR-LA-8ch
 - IDRA-T-8ch
 - IMAR-D
 - IMAR-CT D
 - IHR-LE
 - IHRB · IHRA
 - IDR-F
 - IDR-F33/16
 - IDR
 - IDR-LA
 - IDRA-T
 - IFR · IPR
 - IDBA-HM
- Ring illumination products
 - IDBA-HMS
 - IDBA-HMS-IR
 - IDBA-FD
 - IDBA-LEH2
 - IDBA-LEH
 - IDBA-LE
 - IDBA-SE
 - IDBA-SL
 - IDBA
 - IDBA-Q
 - IFLA · IFLB
 - IDHM
 - IHMA
 - IHMA-V
 - IFPA
 - IFD
 - IFD-IR
 - IHMA-40D
 - IFPA-D
 - IPQC
 - IFHA
- Bar illumination products
 - IDDB-KH · IDDA-KH
 - IDUB
 - IDD
 - IDD-CB
 - IQD · IQDH
 - IQDA-CB
 - IFVA · IFVB
 - IFVA-ST
 - IFV
 - IV-14 · IV-30
 - IHV-20 · IHVE-21
 - IHVA-SP · IHSL-SP
 - IBF
 - IHV-FX
 - RBOX
 - IDBB-CH
 - IDHRA
 - UV-CAN
 - Infrared
 - Infrared
 - IMAR-RGB
 - IDDA-KH-RGB
 - RGB Full-color
 - ISU
 - ISS
- Special illumination products
 - Introduction of Customization
 - High-speed synchronous imaging camera products
 - ISC-24
 - Image capture evaluation kit products
- for products
 - IDMU
 - ILP
 - ILC
 - ILV
 - ILS
 - IPPA_G · IRPA_G
 - IPSA · IPPA
 - IDGC
 - IDPA
 - IDCA
 - IMC
 - IWDV-24
 - IWDV(S)-48
 - ISC
 - IJS
 - IUS-30M2-TP/SS
 - IUS-40M2-PI/SS
- Other illumination products
 - SAG
 - SLUB
 - LLUB
 - IFIC