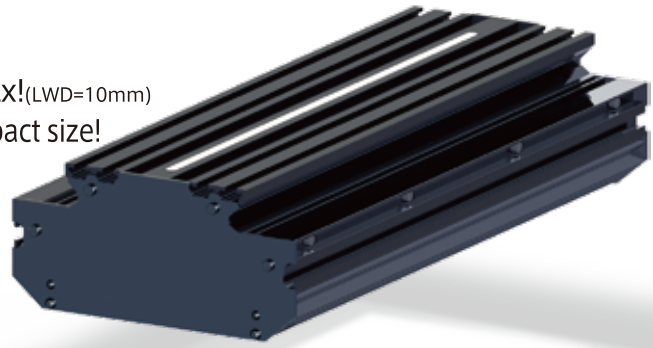


NEW

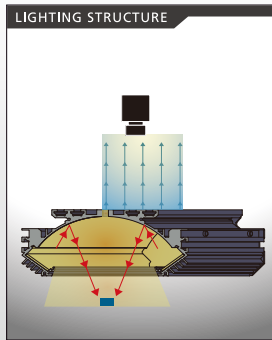
Half-pipe High Intensity Illumination for Line sensor camera(Natural Air Cooling) [IQDH-RE Series]

Achieves a high intensity of over 150,000Lx!(LWD=10mm)
High uniformity and high intensity with a compact size!



Natural Air Cooling High Power LEDs Designs Registered product

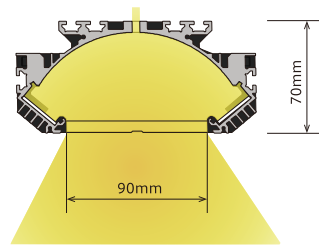
- Applications**
- Food/ Packaging/ Pharmaceutical industry etc.
 - Recognition of characters/ barcodes on uneven objects etc.
 - Inspection of defects in tablets or sheet packs / Visual inspection of PTP tablet packaging etc.
 - Inspection of foreign object detection / Color identification etc.



Standard Size Lineup 100~1,000mm(per.100mm)

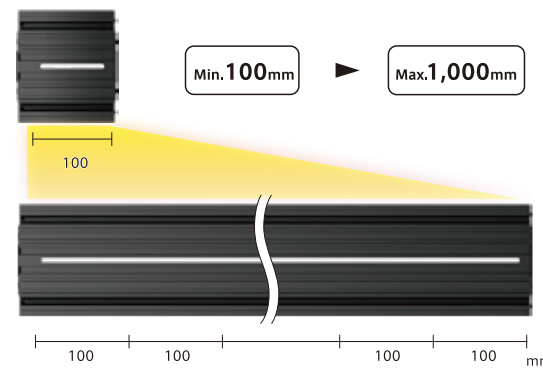
Compact & High power

IQDH-RE series



A Wide Range Of Size Variations Available

Long lengths up to 1,000mm are standardly available(per. 100mm!)



Easy Installation To Fit Clean Room Environments

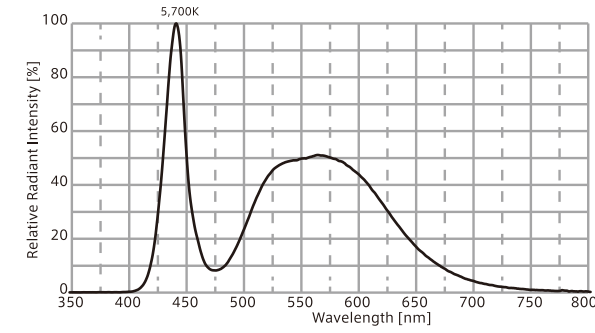
Dedicated slide nut insertion slots on the top and sides of the housing are prepared. The illumination could be fixed with the included standard M4 slide nuts, optional M3 or M5 slide nuts or M5 hex nuts, allowing you to secure it in the position of your choice.



Dedicated slide nuts (M5, M4, M3) insertion slot

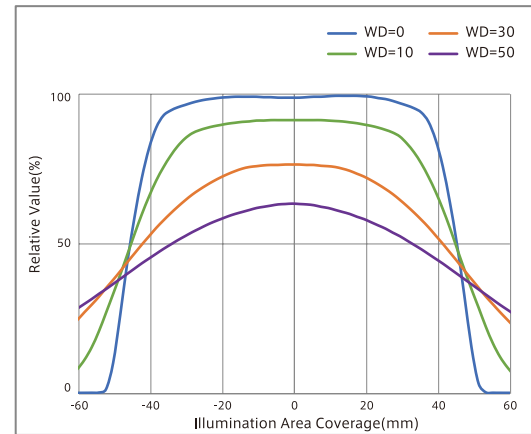
	Model of dedicated slide nut
For M3	INBB-M3-5P
For M4	INBB-M4-5P
For M5	INBB-M5-5P

Optical Spectrum(Ref.Value)

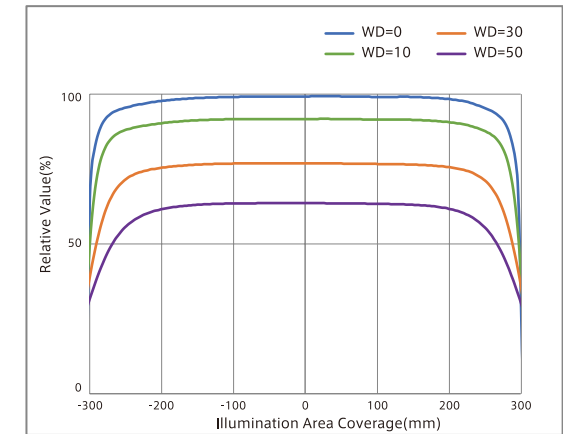


Luminance Distribution Chart(Ref.Value)

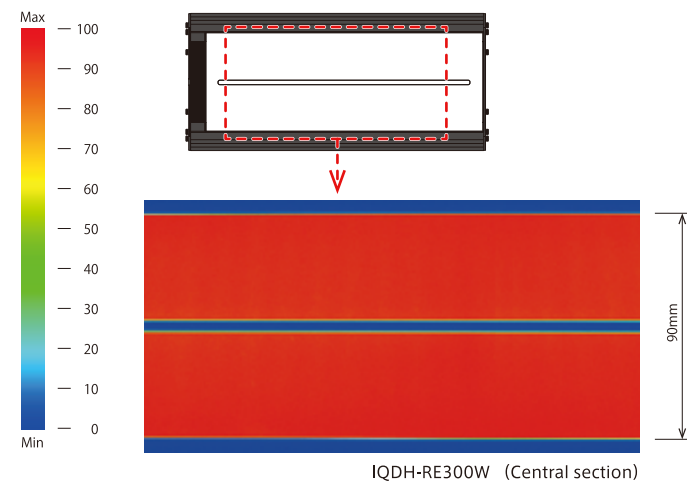
Lateral Direction : IQDH-RE600W



Longitudinal Direction : IQDH-RE600W



Luminance Distribution Chart(Ref.Value)

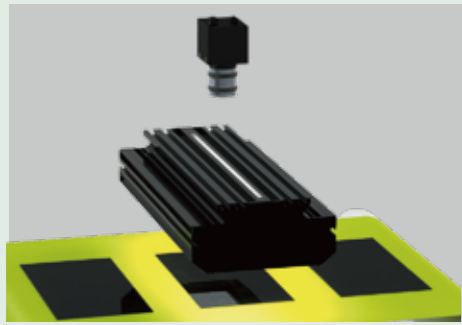


IQDH-RE300W (Central section)

- IDBB-LSRF
- IDBC-LSR
- IDBB-LSRH
- IDBB-LSRA
- IDBB-LSRS
- IDBB-LSRC
- IDBB-LSRC
- IDBC-RE
- IDBB-RE
- IDBA-RK
- IQDH-RE
- IMAR-D -8ch
- IDR-LA-8ch
- IDRA-T-8ch
- IMAR-D
- IMAR-CT D
- IHR-LE
- IHRB - IHRA
- IDR-F
- IDR-F33/16
- IDR
- IDR-LA
- IDRA-T
- IFR - IPR
- IDBA-HM
- IDBA-HMS
- IDBA-HMS-IR
- IDBA-FD
- IDBA-LEH2
- IDBA-LEH
- IDBA-LE
- IDBA-SE
- IDBA-SL
- IDBA-Q
- IFLA - IFLB
- IDHM
- IHMA
- IHMA-V
- IFPA
- IFD-IR
- IHMA-40D
- IFPA-D
- IPQC
- IFHA
- IDDB-KH - IDDA-KH
- IDUB
- IDD
- IDD-CB
- IQD - IQDH
- IQDA-CB
- IFVA - IFVB
- IFVA-ST
- IFV
- IV-14 - IV-30
- IHV-20 - IHVE-21
- IHVA-SP - IHSL-SP
- IBF
- IHV-FX
- RBOX
- IDBB-CH
- IDHRA
- UV-CAN
- Infrared
- Infrared
- IMAR-RGB
- IDDA-KH-RGB
- RGB Full-color
- ISU
- ISS
- Introduction of Customization
- High speed synchronous image capture products
- ISC-24
- Image capture evaluation kit products
- IDMU
- ILP
- ILC
- ILV
- ILS
- IPPA_G - IRPA_G
- IPSA - IPPA
- IDGC
- IDPA
- IDCA
- IMC
- IWDV-24
- IWDV(S)-48
- ISC
- IJS
- IJS-30M2-TP/SS
- ILS-40M2-PV/SS
- SAG
- SLLUB
- LLUB
- IFIC

Example Usage

Application: Inspection of FPD

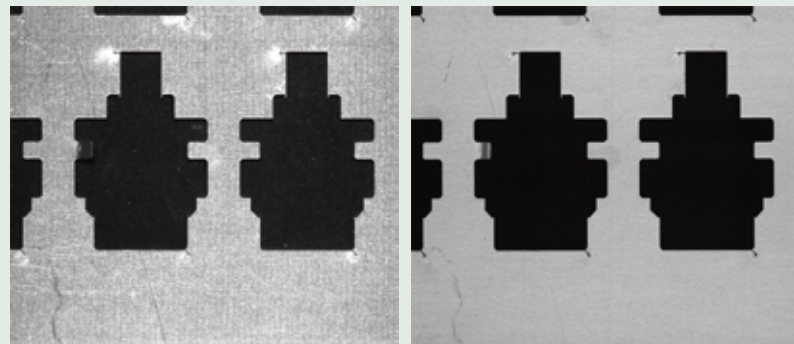


Sample Image



IDBB-LSRA

IQDH-RE



IDBC-LSR

IQDH-RE

When using line illumination such as IDBB-LSRA, surface imperfections and dust become more noticeable. It is suitable for scratch inspections but not ideal for character recognition. Additionally, there can be significant shadows from unevenness depending on the direction of illumination. On the other hand, the IQDH-RE line's half-pipe illumination is perfect for clear character recognition inspections where fine surface imperfections are less noticeable, and shadows are more pronounced.

When using line illumination such as IDBC-LSR on iron plates cut by a laser processing machine, surface roughness, scratches, and laser-induced surface roughening can be detected. On the other hand, with the IQDH-RE line's half-pipe illumination, fine surface roughness becomes less noticeable, and overall contrast improves. This makes it ideal for shape recognition of cutouts and inspections of fine lines.

Model	Color	Power Consumption(W)	Input Voltage	Applicable Controller
IQDH-RE100W	W	24	DC48V	IWDV-120S-48 IWDV-300S-48-C1 IWDV-600S-48-C1 (P.219)
IQDH-RE200W	W	48		
IQDH-RE300W	W	72		
IQDH-RE400W	W	96		
IQDH-RE500W	W	120		
IQDH-RE600W	W	144		
IQDH-RE700W	W	168		
IQDH-RE800W	W	192		
IQDH-RE900W	W	216		
IQDH-RE1000W	W	240		

★Please note that the illumination cannot be directly connected to the controller, a connection cable of any length is necessary.
★Please refer to I-CB-S□R-DNEL2(p.149) for the connection cable. The length of the cable (m) will be indicated in the □ section. (□= 1, 2, 3, 5, 7, 10)

Connection Cable for IQDE-RE

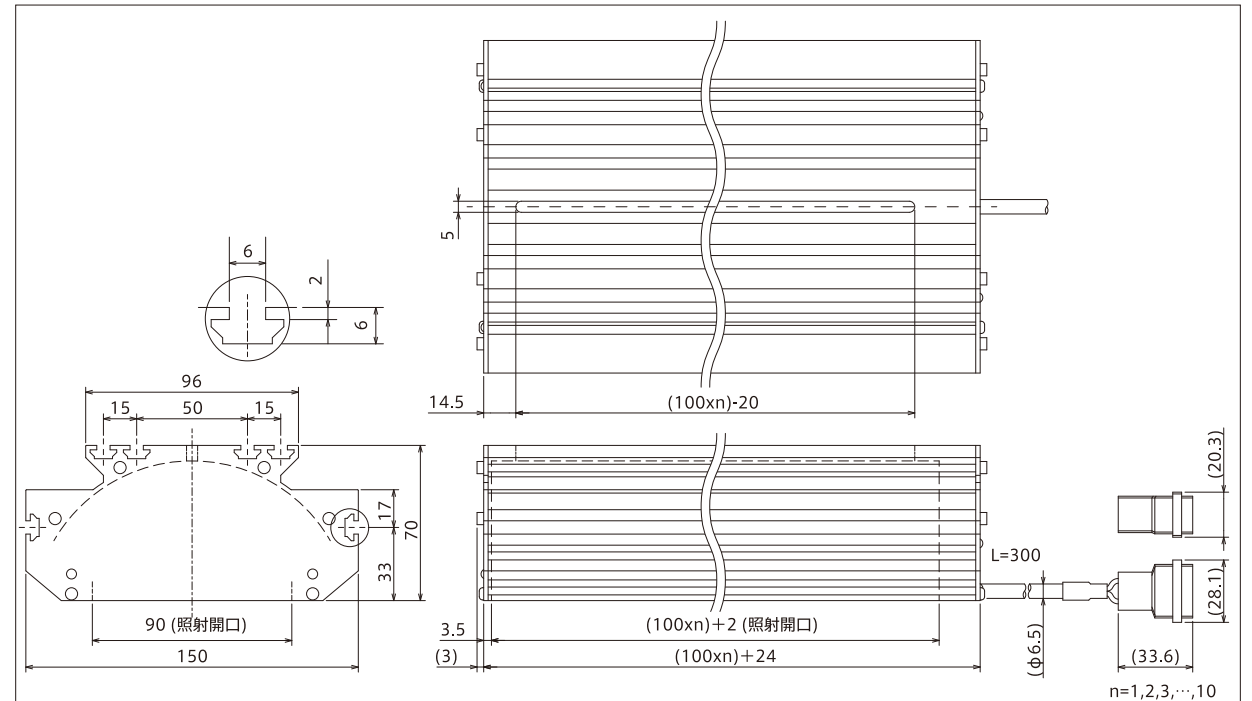
I-CB-S_R-DNEL2 Series



This is a connection cable for the IQDE-RE designed to be compatible with the new IWDV-48 series.

Applicable Digital Controller(Voltage control)

IWDV-120S-48 (100W, 1CH)
IWDV-300S-48-C1 (300W, 1CH)
IWDV-600S-48-C1 (600W, 1CH)
 Output control: 1,000 levels
 External control: Ethernet and 10-bit parallel communications, ON/OFF control
 Please refer to P. 219 for more details.



- IDBB-LSRF
- IDBC-LSR
- IDBB-LSRH
- IDBB-LSRA
- IDBB-LSRC
- IDBB-LSRC
- IDBB-RE
- IDBB-RE
- IDBA-RK
- IQDH-RE
- IMAR-D -8ch
- IDR-LA-8ch
- IDRA-T-8ch
- IMAR-D
- IMAR-CT D
- IHR-LE
- IHRB · IHRA
- IDR-F
- IDR-F33/16
- IDR
- IDR-LA
- IDRA-T
- IFR · IPR
- IDBA-HM
- IDBA-HMS
- IDBA-HMS-IR
- IDBA-FD
- IDBA-LEH2
- IDBA-LEH
- IDBA-LE
- IDBA-SE
- IDBA-SL
- IDBA
- IDBA-Q
- IFLA · IFLB
- IDHM
- IHMA
- IHMA-V
- IFPA
- IFD
- IFD-IR
- IHMA-40D
- IFPA-D
- IPOC
- IFHA
- IDDB-KH · IDDA-KH
- IDUB
- IDD
- IDD-CB
- IQD · IQDH
- IQDA-CB
- IFVA · IFVB
- IFVA-ST
- IFV
- IV-14 · IV-30
- IHV-20 · IHVE-21
- IHVA-SP · IHSL-SP
- IBF
- IHV-FX
- RBOX
- IDBB-CH
- IDHRA
- UV-CAN
- Infrared
- Infrared
- IMAR-RGB
- IDDA-KH-RGB
- RGB Full-color
- ISU
- ISS
- Introduction of Customization
- High-speed image capture products
- ISC-24
- Image capture evaluation kit products
- IDMU
- ILP
- ILC
- ILV
- ILS
- IPPA_G · IRPA_G
- IPSA · IPPA
- IDGC
- IDPA
- IDCA
- IMC
- IWDV-24
- IWDV(S)-48
- ISC
- IJS
- IJS-30M2-TP/SS
- ILS-40M2-PI/SS
- SAG
- SLLUB
- LLUB
- IFIC

- IDBB-LSRF
- IDBC-LSR
- IDBB-LSRH
- IDBB-LSRA
- IDBB-LSRC
- IDBB-LSRC
- IDBB-RE
- IDBB-RE
- IDBA-RK
- IQDH-RE
- IMAR-D -8ch
- IDR-LA-8ch
- IDRA-T-8ch
- IMAR-D
- IMAR-CT D
- IHR-LE
- IHRB · IHRA
- IDR-F
- IDR-F33/16
- IDR
- IDR-LA
- IDRA-T
- IFR · IPR
- IDBA-HM
- IDBA-HMS
- IDBA-HMS-IR
- IDBA-FD
- IDBA-LEH2
- IDBA-LEH
- IDBA-LE
- IDBA-SE
- IDBA-SL
- IDBA
- IDBA-Q
- IFLA · IFLB
- IDHM
- IHMA
- IHMA-V
- IFPA
- IFD
- IFD-IR
- IHMA-40D
- IFPA-D
- IPOC
- IFHA
- IDDB-KH · IDDA-KH
- IDUB
- IDD
- IDD-CB
- IQD · IQDH
- IQDA-CB
- IFVA · IFVB
- IFVA-ST
- IFV
- IV-14 · IV-30
- IHV-20 · IHVE-21
- IHVA-SP · IHSL-SP
- IBF
- IHV-FX
- RBOX
- IDBB-CH
- IDHRA
- UV-CAN
- Infrared
- Infrared
- IMAR-RGB
- IDDA-KH-RGB
- RGB Full-color
- ISU
- ISS
- Introduction of Customization
- High-speed image capture products
- ISC-24
- Image capture evaluation kit products
- IDMU
- ILP
- ILC
- ILV
- ILS
- IPPA_G · IRPA_G
- IPSA · IPPA
- IDGC
- IDPA
- IDCA
- IMC
- IWDV-24
- IWDV(S)-48
- ISC
- IJS
- IJS-30M2-TP/SS
- ILS-40M2-PI/SS
- SAG
- SLLUB
- LLUB
- IFIC