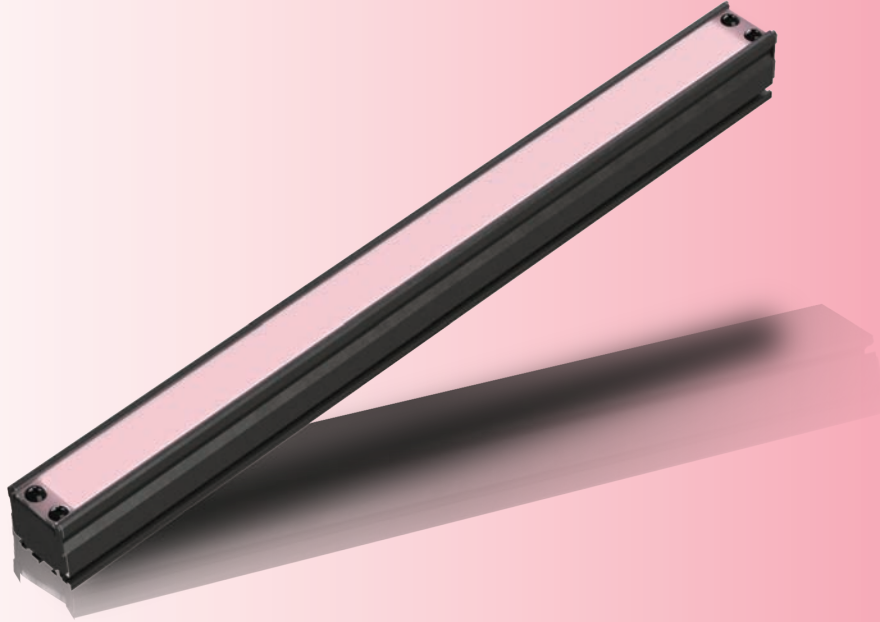


NEW Product

Design application
submitted

High Uniform Infrared Bar Light IDBA-HMS-IR series



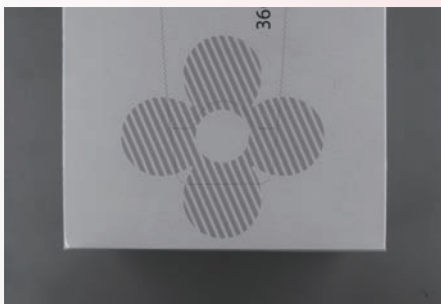
Infrared wavelengths of 850nm and 950nm have been added to our compact size bar lighting lineup. Since the length supports up to 800 mm, it can irradiate a wide range uniformly.

Ideal for stain inspection of packages with patterns on the surface and seal jam detection. By using a visible cut filter, it enables stable inspection due to being less susceptible to ambient light.

1

Surface inspection example by infrared light (pattern printing transmission)

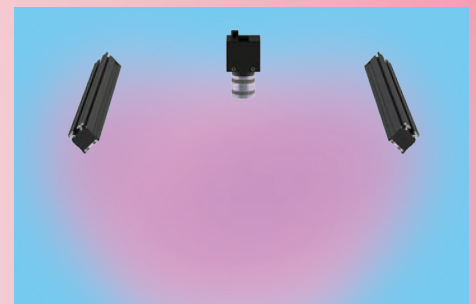
Since the printed pattern can be erased from the image by using infrared light, it is possible to emphasize only the perforations on the object surface.



visible light



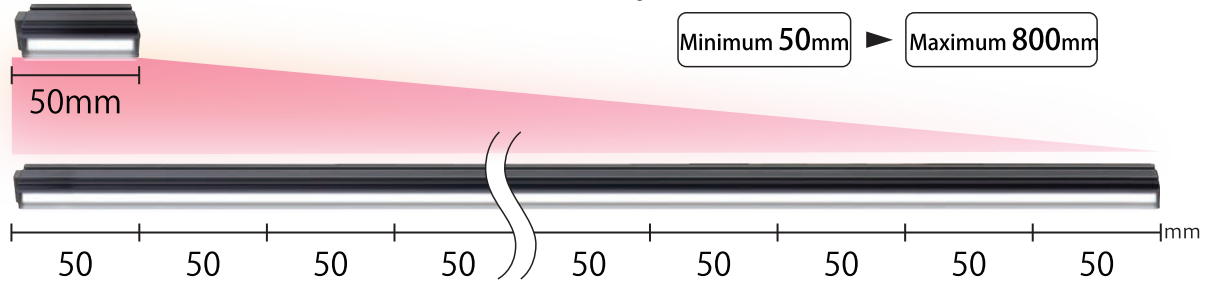
infrared light: 850nm








Irradiation Image

2 Wide Variety of Sizes

Available in 50mm increments up to a maximum length of 600mm for DC 12V, also available in 100mm increments up to a maximum length of 900mm for DC 24V.

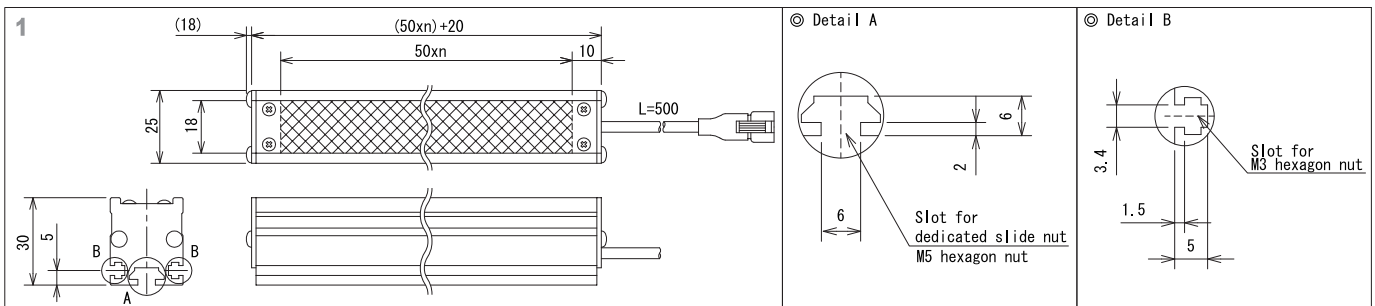


3 Product Specification

Model	Color	Power Consumption (W)	Input Voltage	Applicable Power supply	Drawing
IDBA-HMS50□■	IR-850 IR-950	2.4	DC12V	ILP-30M2, IDGB series, other, overdrive power supply etc.   ILP-30M2 IDGB series  Overdrive power supply	n=1
IDBA-HMS100□■	IR-850 IR-950	4.8			n=2
IDBA-HMS150□■	IR-850 IR-950	7.2			n=3
IDBA-HMS200□■	IR-850 IR-950	9.6			n=4
IDBA-HMS250□■	IR-850 IR-950	12			n=5
IDBA-HMS300□■	IR-850 IR-950	14.4			n=6
IDBA-HMS350□■	IR-850 IR-950	16.8			n=7
IDBA-HMS400□■	IR-850 IR-950	19.2			n=8
IDBA-HMS500□■	IR-850 IR-950	24			n=10
IDBA-HMS600□■	IR-850 IR-950	28.8	n=12		
IDBA-HMS100□HV■	IR-850 IR-950	4.8	DC24V	ILP-60M2-24, IDGB-24 series   ILP-60M2-24 IDGB-24 series	n=2
IDBA-HMS200□HV■	IR-850 IR-950	9.6			n=4
IDBA-HMS300□HV■	IR-850 IR-950	14.4			n=6
IDBA-HMS400□HV■	IR-850 IR-950	19.2			n=8
IDBA-HMS500□HV■	IR-850 IR-950	24			n=10
IDBA-HMS600□HV■	IR-850 IR-950	28.8			n=12
IDBA-HMS700□HV■	IR-850 IR-950	33.6			n=14
IDBA-HMS800□HV■	IR-850 IR-950	38.4			n=16

- ★ □ represents light color (IR-850=Infrared, IR-950=Infrared)
- ★ For high uniform specification, add -S on ■.
- ★ Lengths other than those above can also be manufactured.

4 Drawing



Challenge & High Quality

Leimac Ltd.

Head Office : 1551 Sazukawacho, Moriyama, Shiga 524-0215, JAPAN
 TEL: +81-77-585-6771 FAX: +81-77-585-6773
 Tokyo Office : 2-5-6 Uchikanda, Chiyoda-ku, Tokyo 101-0047, JAPAN, 2nd floor Kameda Bldg.
 TEL: +81-3-6206-4838 FAX: +81-3-6206-4575
 Sendai Office : 1-3-9, Honcho, Aoba-ku, Sendai-shi, Miyagi 980-0014, JAPAN, 8th floor 6th Hirose Bldg.
 TEL: +81-3-6206-4838(Tokyo Office) FAX: +81-3-6206-4575(Tokyo Office)
 Testing Room: Osaka, Aichi
 HP: <https://leimac.jp/en/> E-mail: led_sales@leimac.jp

20210125.0000(L)

* Our products are industrial products based on the assumption of use for built-in equipment, during the manufacturing process, or in the manufacturing plant.
 * These data are for reference only. They do not guarantee the product performance.
 * Please note product specifications and designs are subject to change without notice.